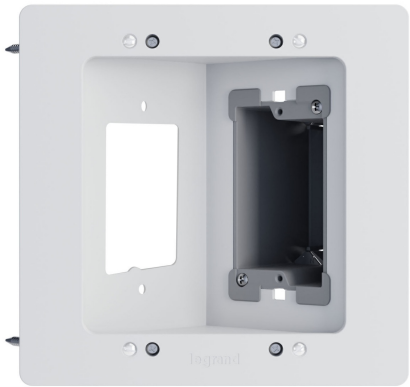




On-Q

In-Wall Power & Cable Management TV Connection Kit - New Construction/Retrofit (Blank)

Part No. HT2302BWH



The Recessed TV Box for power and low voltage supports power and class 2 low voltage behind a wall mounted TV. The design allows for cables and power connections to be tucked away, allowing TVs to be flush against the wall. The box can be mounted directly to a wall stud in new construction or use the wing clamps to secure to drywall in a retrofit applications. The recessed TV Box fits in a standard 2x4 wall, and supports wall thicknesses up to 1in.The Class 2 Low voltage side includes concentric knockout rings to support flexible conduit connections. Product contents include: Recessed TV Box, Removable Trim Ring, 1 Gang Old-Work Junction Box, and necessary mounting hardware.

Features & Benefits

- Provide recessed power and AV connectivity support for a wall mounted TV.

Recessed TV box mounts directly to wall studs with included screws for new construction installation

Hides both power and AV cables inside the wall for a clean, professional installation
- The Low voltage side of the box includes concentric knockout rings for support of flexible conduit connections.

Recessed TV box includes pre-installed wing clamps to secure to drywall in retrofit installations.

Kit Contents Include: Recessed TV Box, Removable Trim Ring, 1 Gang Old-Work Junction Box, and necessary mounting hardware.

Specifications

General Info

Product Line	On-Q	Color	White
Finish	Glossy	Country Of Origin	China
Package Quantity	1	Application Sector	Residential
Standard	Ulus	Warranty Type	5-Year
Type	Wall Box		

Dimensions

Product Width US	3.8 in	Product Weight US	0.84 lb
Product Height US	8.7 in	Product Length US	8.37 in

Technical Information

Is Tamper-Resistant	No	Temperature Rating	32° - 122° F
Is Weather Resistant	No	Indoor/Outdoor	Indoor
Voltage	125.0 V		