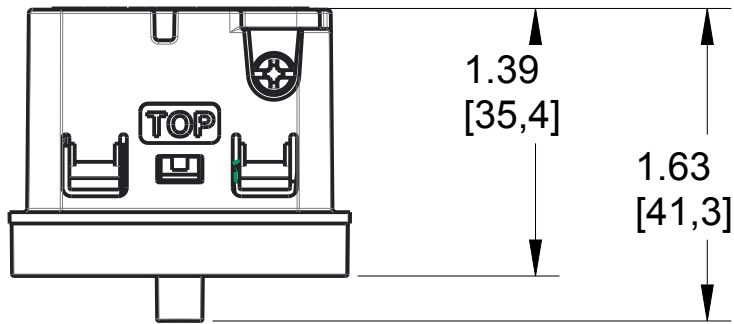


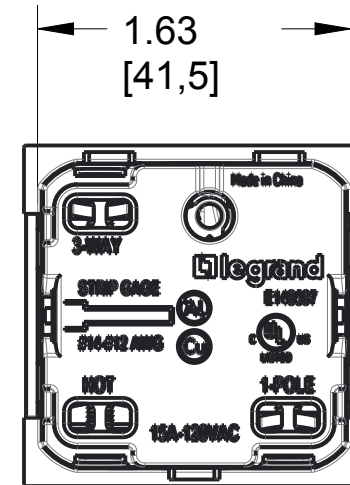
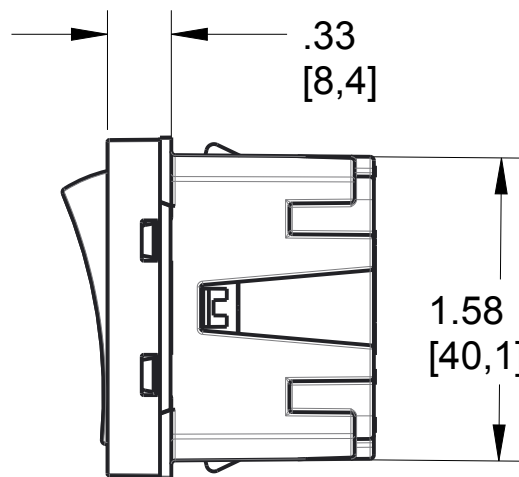
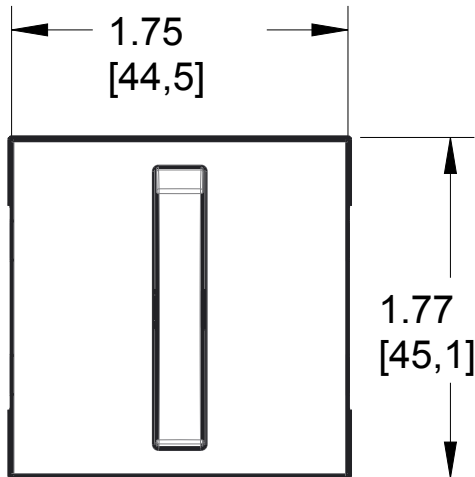
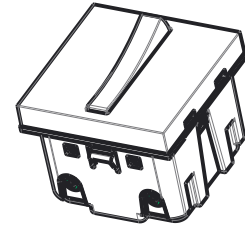
2

1



REV	EC.NO.	DATE	DESCRIPTION	DFTR	CK.
A			INITIAL RELEASE		

SCALE 0.500



B

B

A

Size Face: 2x2 Module
 Size Backbody: 2x2 Module
 3rd Party Compliance: cULus LISTED
 Rating:
 15amp, 120 VAC, All Loads
 Termination: Back Wire Only
 Misc: Copper Wire Only
 Accepts Locator Status Light
 For Use With adorne System Only

ASWR1532, Whisper Switch

MATERIAL	SEE NOTE	UNSPECIFIED TOL. FRAC. $\pm 1/64$ ANGLES ± 1.0 DEC. $.0 \pm 0.02$ $.00 \pm 0.01$ $.000 \pm 0.005$	 		
FINISH	SEE NOTE				
DSGN BY:	5/26/2015		MODEL NAME:	ASWR1532	
DR BY:		SHT 1of1	PROJ.	DWG NO.:	REV.:
CK BY:		SCALE: 1.000		CD1166	A

NOTICE: Proprietary and confidential information of Pass & Seymour/Legrand
 Reproduction or disclosure prohibited under penalty of law.

2

1