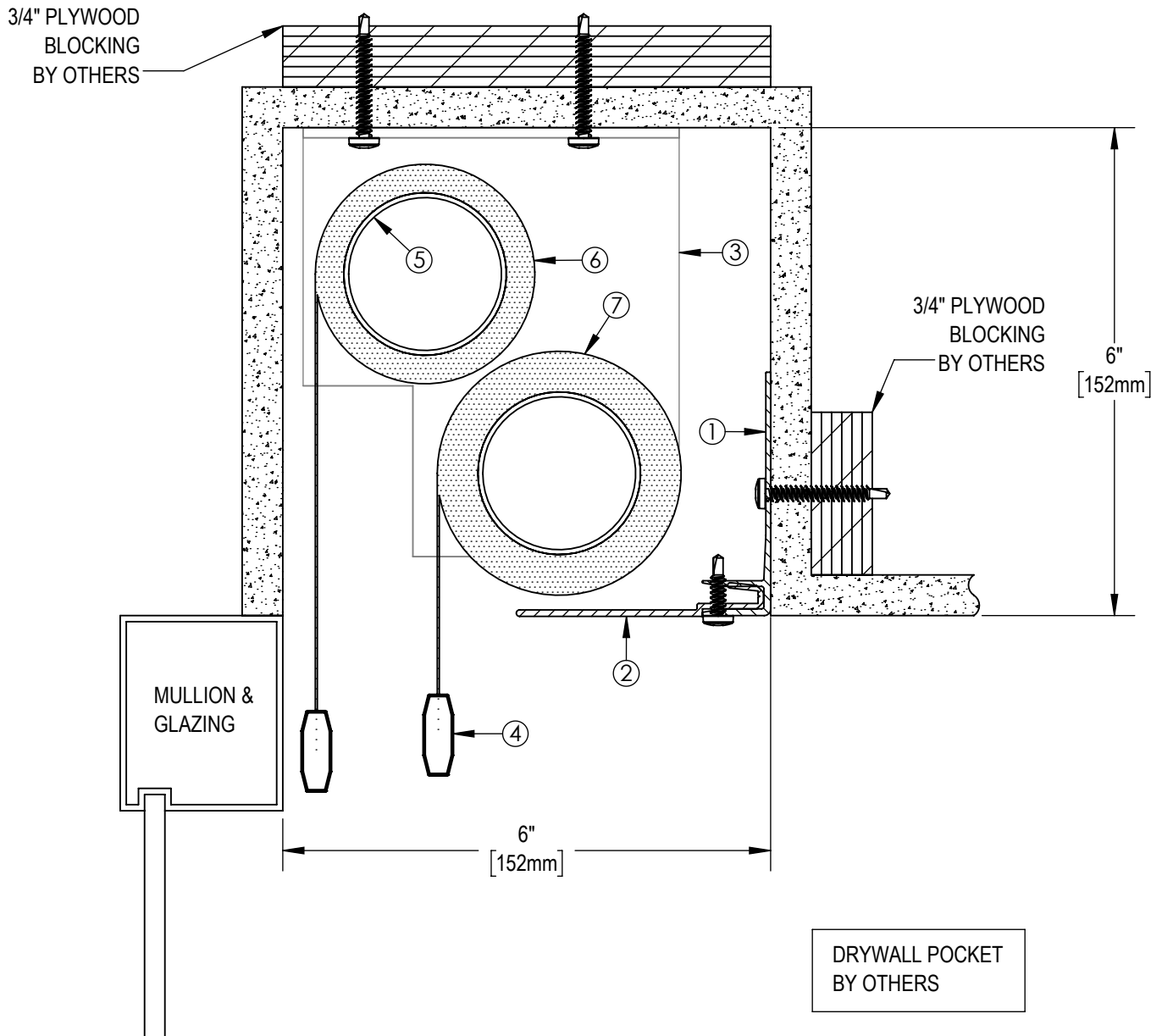


SHADE LIMITED IN WIDTH
AND IN HEIGHT



NOTES:

1. EXTRUDED ALUMINUM HANGER
2. 4" EXTRUDED ALUMINUM CLOSURE
3. END BRACKET
4. EXTRUDED ALUMINUM EXTERIOR HEMBAR
5. 2" ϕ EXTRUDED ALUMINUM TUBE
6. FABRIC: 1%, 3%, 5%, 10% OPENNESS OR BLACKOUT
7. FABRIC: 1%, 3%, 5%, 10% OPENNESS OR BLACKOUT

**** NOTE ****

JUNCTION BOX TO BE LOCATED WITHIN 3 FT OF MOTOR LOCATION. MOTOR LOCATION TO BE DETERMINED WITH SOLARFACTIVE REPRESENTATIVE.



SOLARFACTIVE

USA Phone: 850-208-3417
Canada Phone: 416-421-3800
E-mail: sfsupport@legrand.us

DISTRICT SHADE 4 DUAL SYSTEM IN POCKET

PROJECT:

-

DATE:

JUL 9, 2018

SCALE:

1 : 2

FILE No.

QM170167

DWG. No.

SF-ES5A