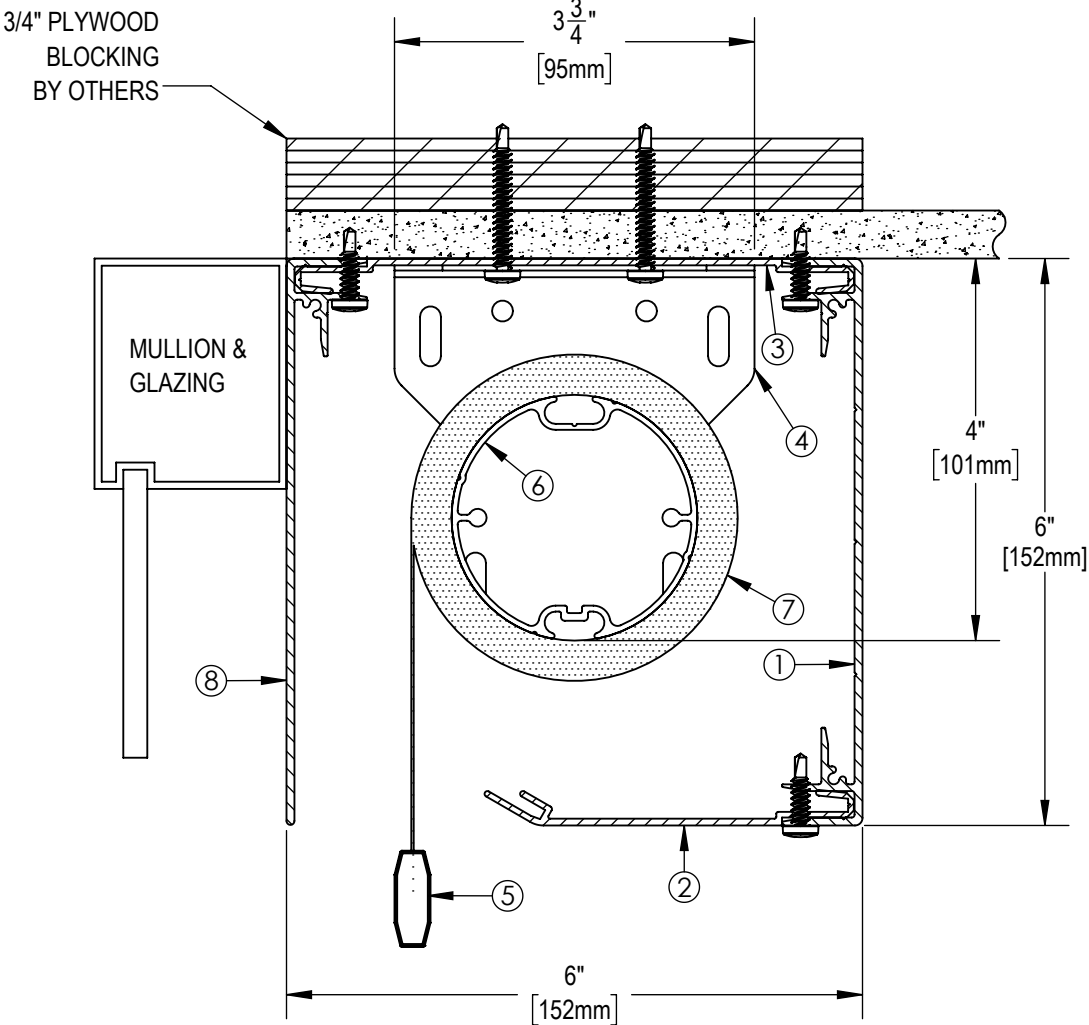


**** NOTE ****

JUNCTION BOX TO BE LOCATED WITHIN 3 FT OF MOTOR LOCATION. MOTOR LOCATION TO BE DETERMINED WITH SOLARFECTIVE REPRESENTATIVE.



NOTES:

- 1. EXTRUDED ALUMINUM 6" FASCIA
- 2. 4" EXTRUDED ALUMINUM CLOSURE
- 3. MOUNTING ANGLE
- 4. END BRACKET
- 5. EXTRUDED ALUMINUM EXTERIOR HEMBAR
- 6. 2 1/2" OR 3 1/2" Ø EXTRUDED ALUMINUM TUBE
- 7. FABRIC: 1%, 3%, 5%, 10% OPENNESS OR BLACKOUT
- 8. EXTRUDED ALUMINUM 6" BACK FASCIA



SOLARFECTIVE

USA Phone: 850-208-3417
 Canada Phone: 416-421-3800
 E-mail: sfsupport@legrand.us

DISTRICT SHADE 6 WITH CEILING MOUNT FRONT AND BACK FASCIA

| | | | |
|-------------|--------|----------|----------|
| PROJECT: - | | | |
| DATE: | SCALE: | FILE No. | DWG. No. |
| JUL 9, 2018 | 1 : 2 | QM170167 | SF-ES9 |