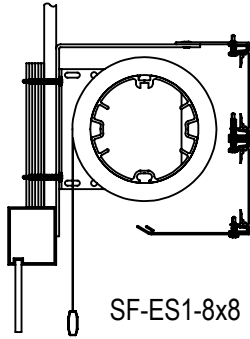
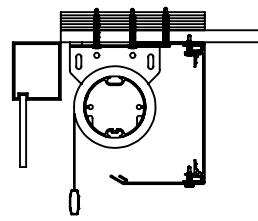


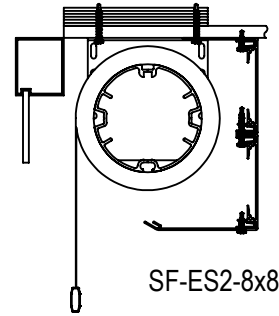
SF-ES1



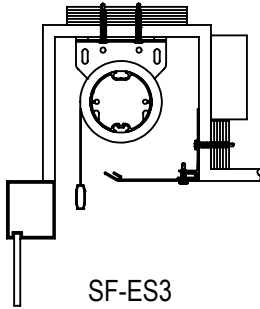
SF-ES1-8x8



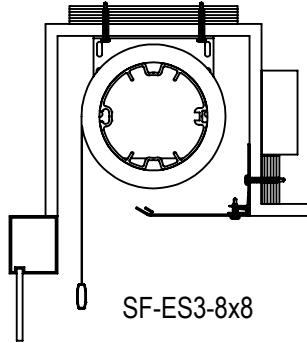
SF-ES2



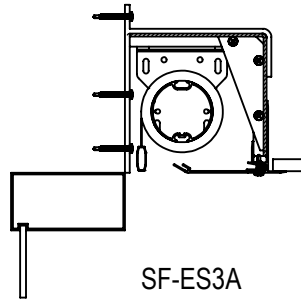
SF-ES2-8x8



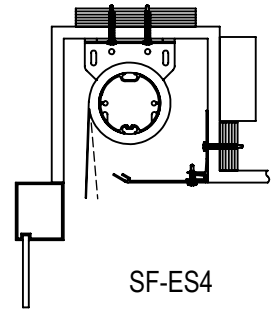
SF-ES3



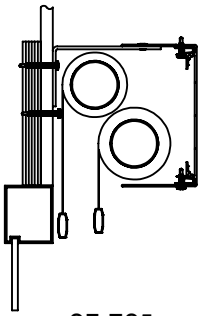
SF-ES3-8x8



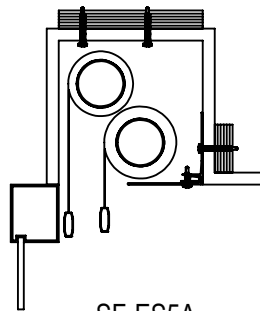
SF-ES3A



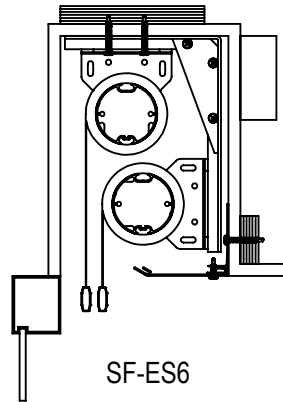
SF-ES4



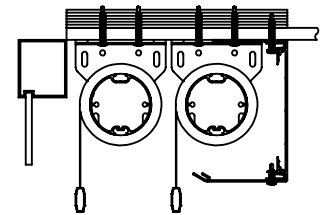
SF-ES5



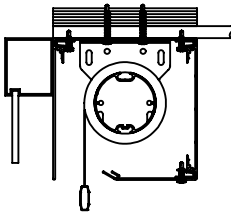
SF-ES5A



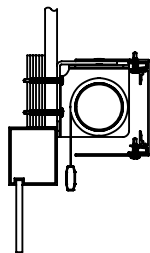
SF-ES6



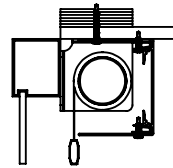
SF-ES7



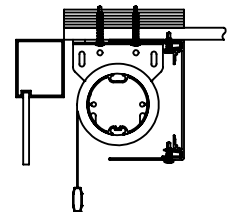
SF-ES9



SF-ES10



SF-ES11



SF-ES12



## SOLARFECTIVE

Legrand Customer Service Information  
Phone: 833-456-4291  
Email: shading.cs@legrand.us

## ES BLACKOUT SHADE SYSTEMS WITHOUT BLACK OUT CHANNELS

DATE:

APR 1, 2019

SCALE:

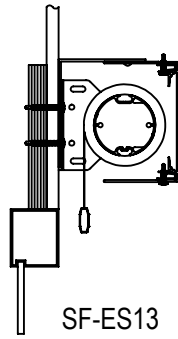
1:2

DOCUMENT NUMBER:

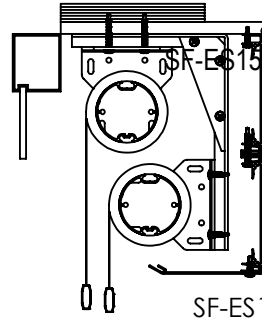
QM170167

REVISION:

-



SF-ES13



SF-ES15



**SOLARFECTIVE**

Legrand Customer Service Information  
Phone: 833-456-4291  
Email: shading.cs@legrand.us

**ES BLACKOUT SHADE SYSTEMS WITHOUT  
BLACKOUT CHANNELS**

DATE:

APR 1, 2019

SCALE:

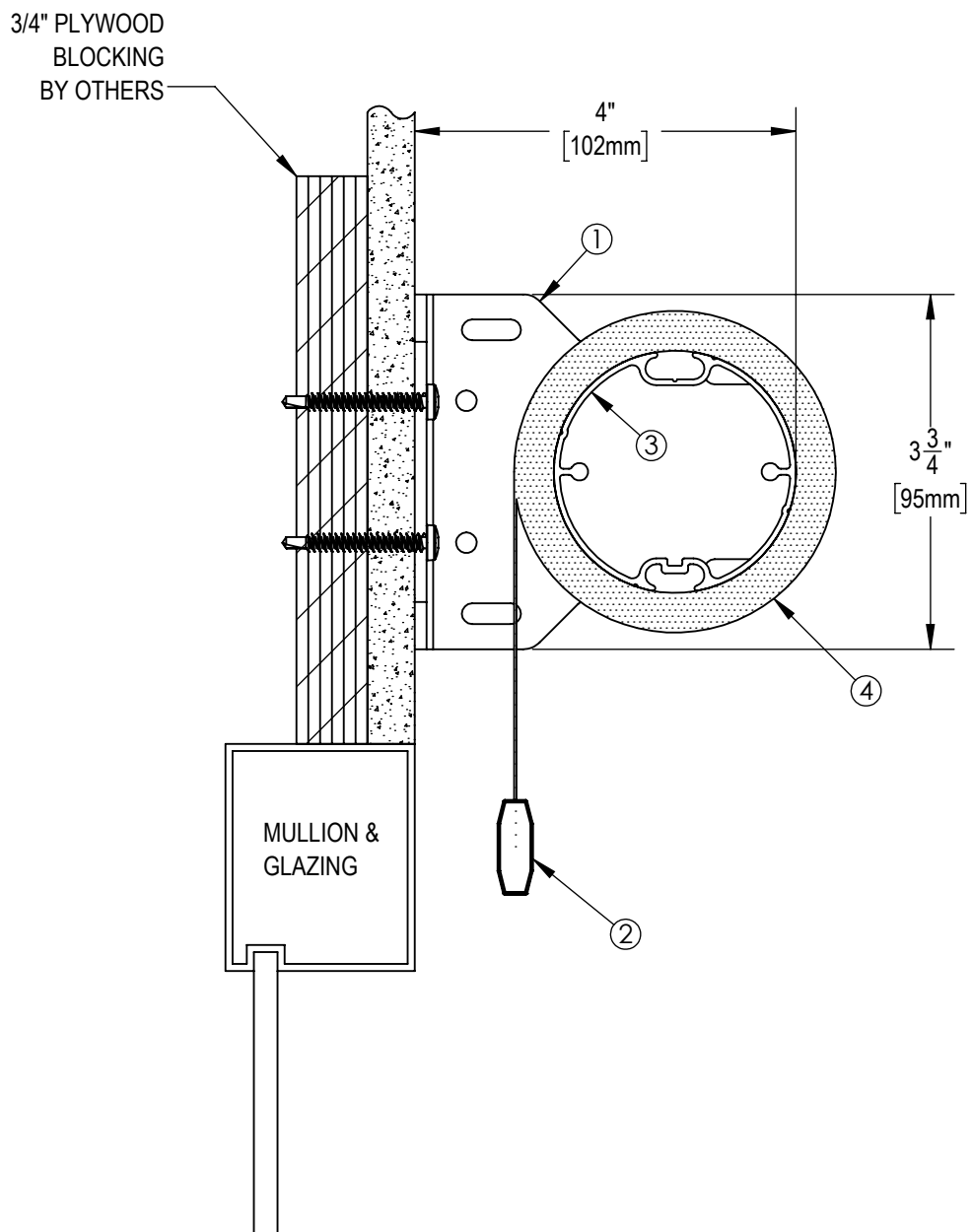
1:2

DOCUMENT NUMBER:

QM170167

REVISION:

-



**NOTES:**

1. END BRACKET
2. EXTRUDED ALUMINUM EXTERIOR HEMBAR
3. 2", 2 1/2" OR 3 1/2"  $\phi$  EXTRUDED ALUMINUM TUBE
4. FABRIC: 1%, 3%, 5%, 10% OPENNESS OR BLACKOUT

**\*\* NOTE \*\***

JUNCTION BOX TO BE LOCATED WITHIN 3 FT OF MOTOR LOCATION. MOTOR LOCATION TO BE DETERMINED WITH SOLARFECTIVE REPRESENTATIVE.



**SOLARFECTIVE**

Legrand Customer Service Information  
Phone: 833-456-4291  
Email: shading.cs@legrand.us

**ES SHADE WITHOUT FASCIA**

DATE:

APR 1, 2019

SCALE:

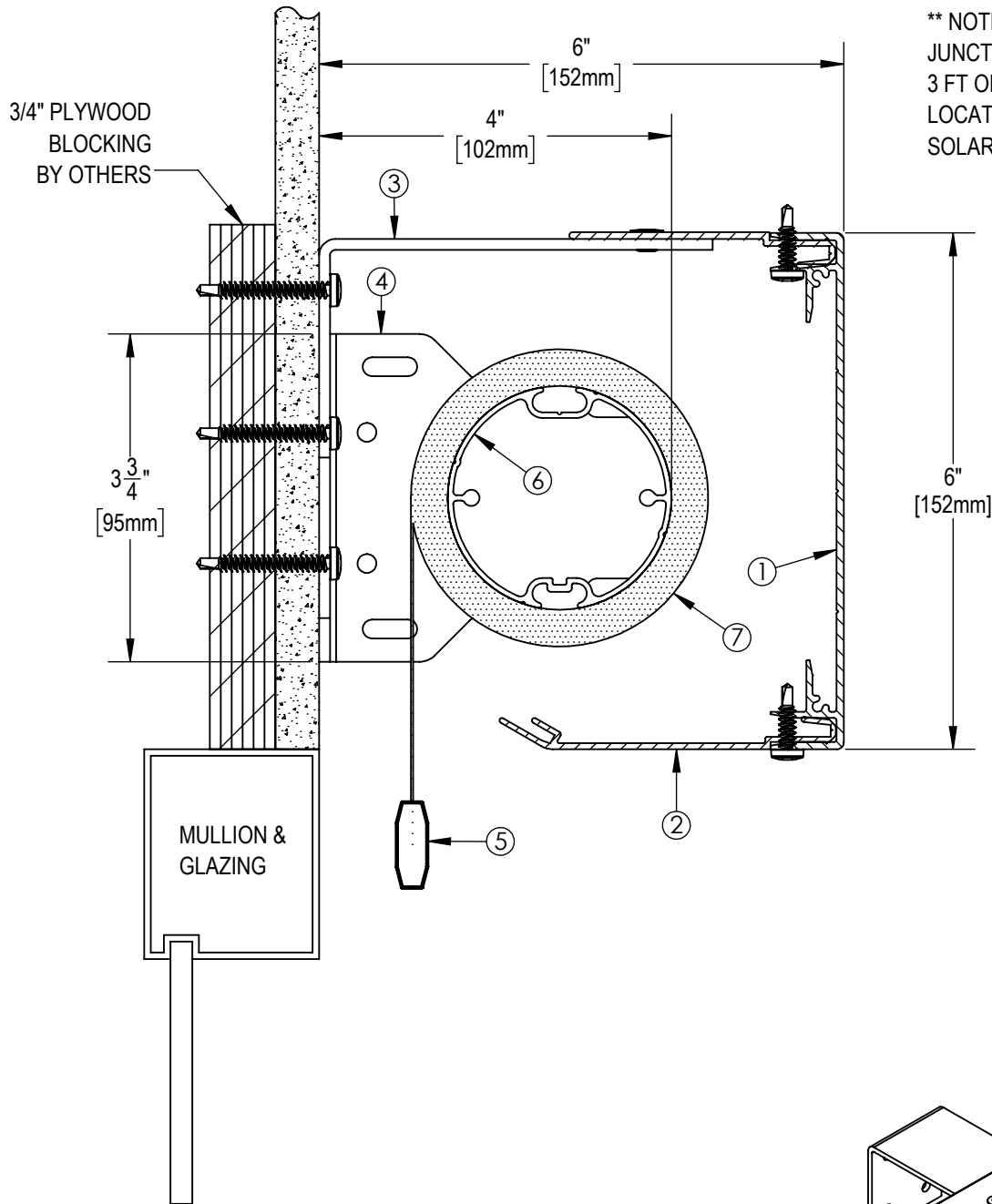
1:2

DOCUMENT NUMBER:

SF-ES0

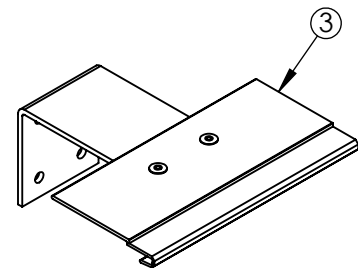
REVISION:

-



**\*\* NOTE \*\***

JUNCTION BOX TO BE LOCATED WITHIN 3 FT OF MOTOR LOCATION. MOTOR LOCATION TO BE DETERMINED WITH SOLARFECTIVE REPRESENTATIVE.



ISO VIEW OF MOUNTING ANGLE  
ONE AT EACH END.

**NOTES:**

1. EXTRUDED ALUMINUM 6" FASCIA
2. 4" EXTRUDED ALUMINUM CLOSURE
3. MOUNTING ANGLE
4. END BRACKET
5. EXTRUDED ALUMINUM EXTERIOR HEMBAR
6. 2 1/2" OR 3 1/2" Ø EXTRUDED ALUMINUM TUBE
7. FABRIC: 1%, 3%, 5%, 10% OPENNESS OR BLACKOUT



**SOLARFECTIVE**

Legrand Customer Service Information  
Phone: 833-456-4291  
Email: shading.cs@legrand.us

**ES SHADE 6 WITH FACE MOUNT FASCIA**

DATE:

APR 1, 2019

SCALE:

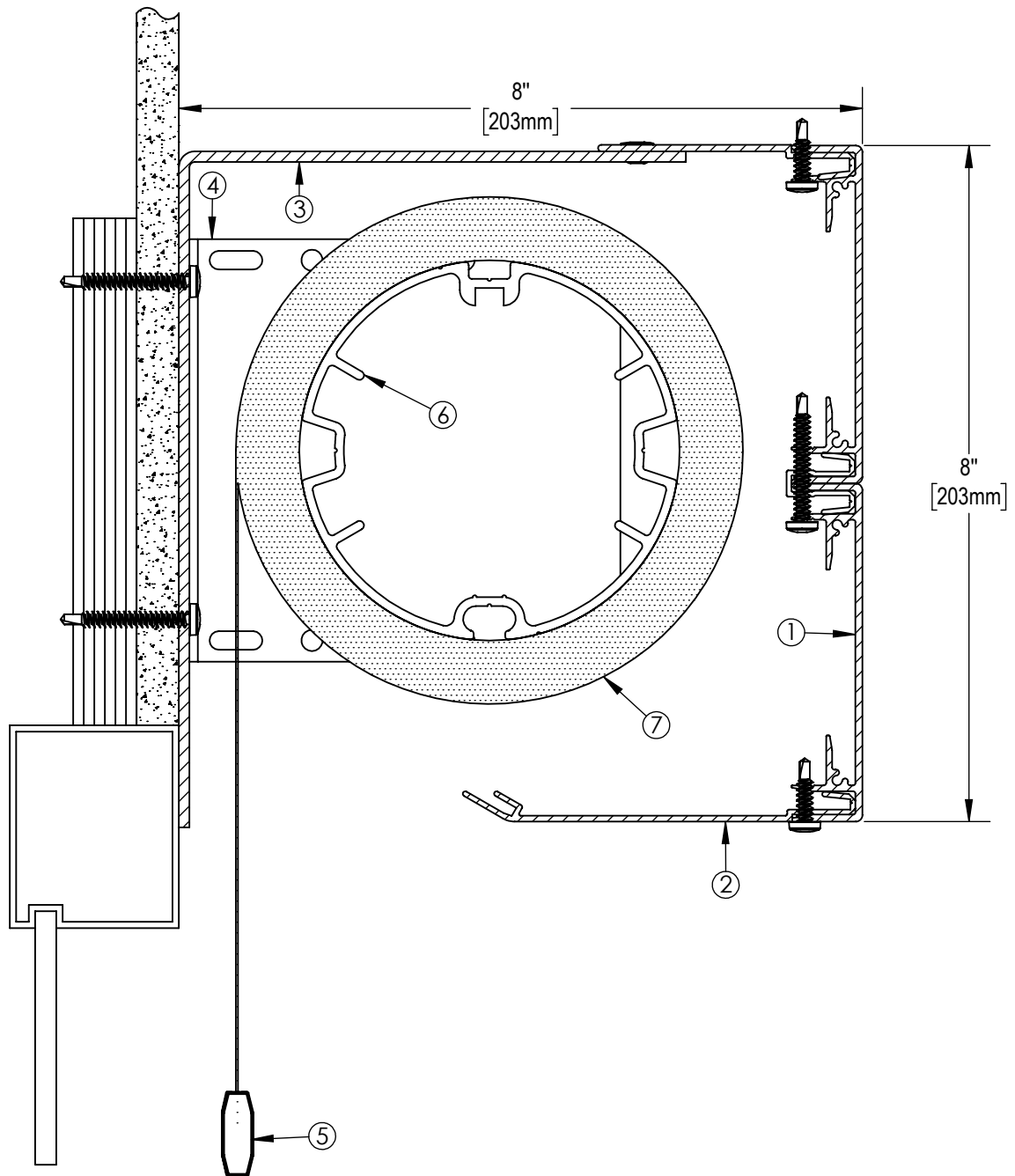
1:2

DOCUMENT NUMBER:

SF-ES1

REVISION:

-



**NOTES:**

1. EXTRUDED ALUMINUM 8" FASCIA
2. 5" EXTRUDED ALUMINUM CLOSURE
3. MOUNTING ANGLE
4. END BRACKET
5. EXTRUDED ALUMINUM EXTERIOR HEMBAR
6. FABRIC: 1%, 3%, 5%, 10% OPENNESS OR BLACKOUT

**\*\* NOTE \*\***

JUNCTION BOX TO BE LOCATED  
WITHIN 3 FT OF MOTOR LOCATION.  
MOTOR LOCATION TO BE DETERMINED  
BY SOLARFECTIVE REPRESENTATIVE.



**SOLARFECTIVE**

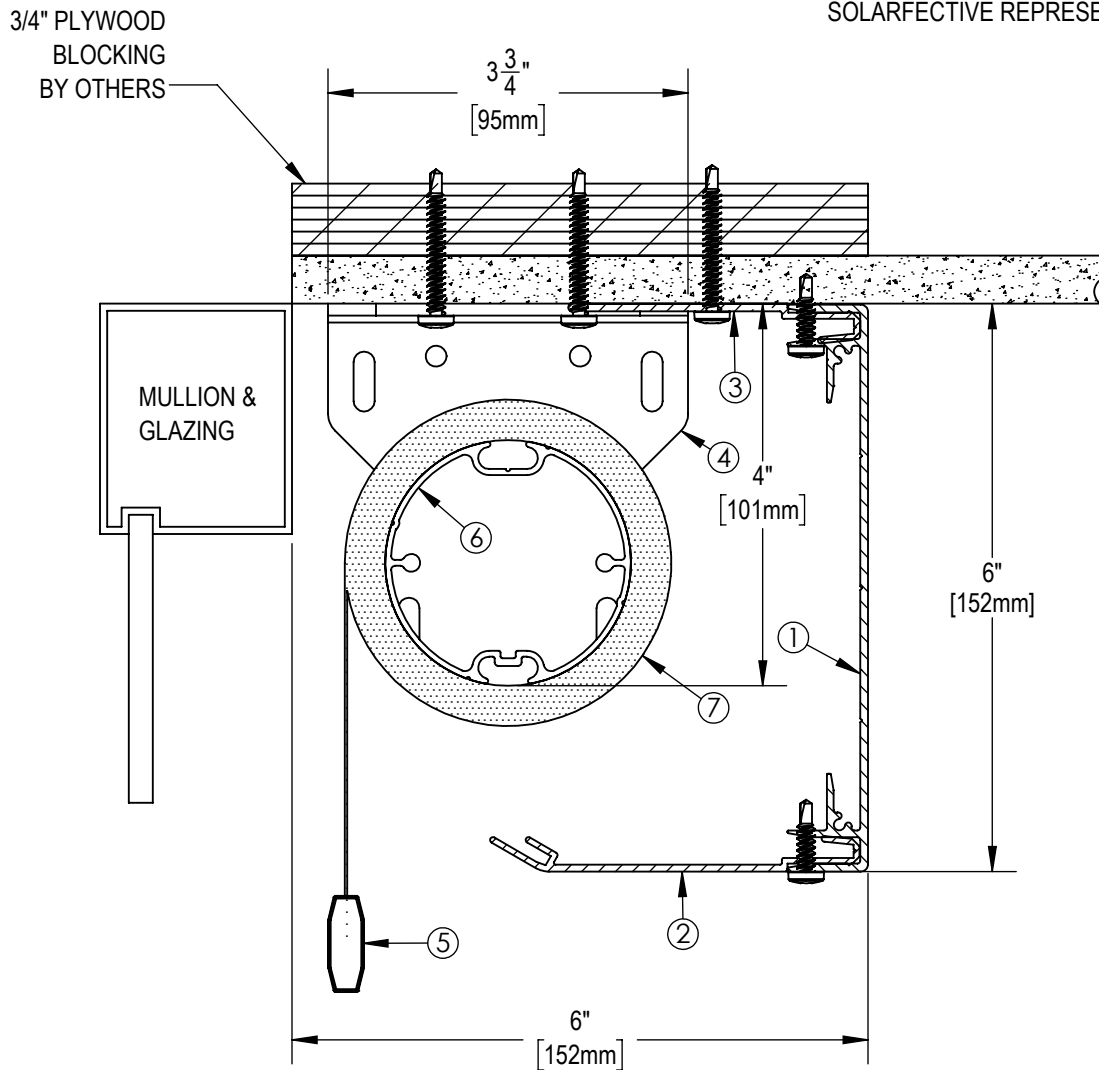
Legrand Customer Service Information  
Phone: 833-456-4291  
Email: shading.cs@legrand.us

**MOTORIZED SHADE WITH FACE MOUNT 8" FASCIA**

DATE:	SCALE:	DOCUMENT NUMBER:	REVISION:
APR 1, 2019	1:2	SF-ES1-8x8	-

**\*\* NOTE \*\***

JUNCTION BOX TO BE LOCATED WITHIN 3 FT OF MOTOR LOCATION. MOTOR LOCATION TO BE DETERMINED WITH SOLARFECTIVE REPRESENTATIVE.



**NOTES:**

1. EXTRUDED ALUMINUM 6" FASCIA
2. 4" EXTRUDED ALUMINUM CLOSURE
3. MOUNTING ANGLE
4. END BRACKET
5. EXTRUDED ALUMINUM EXTERIOR HEMBAR
6. 2 1/2" OR 3 1/2" Ø EXTRUDED ALUMINUM TUBE
7. FABRIC: 1%, 3%, 5%, 10% OPENNESS OR BLACKOUT

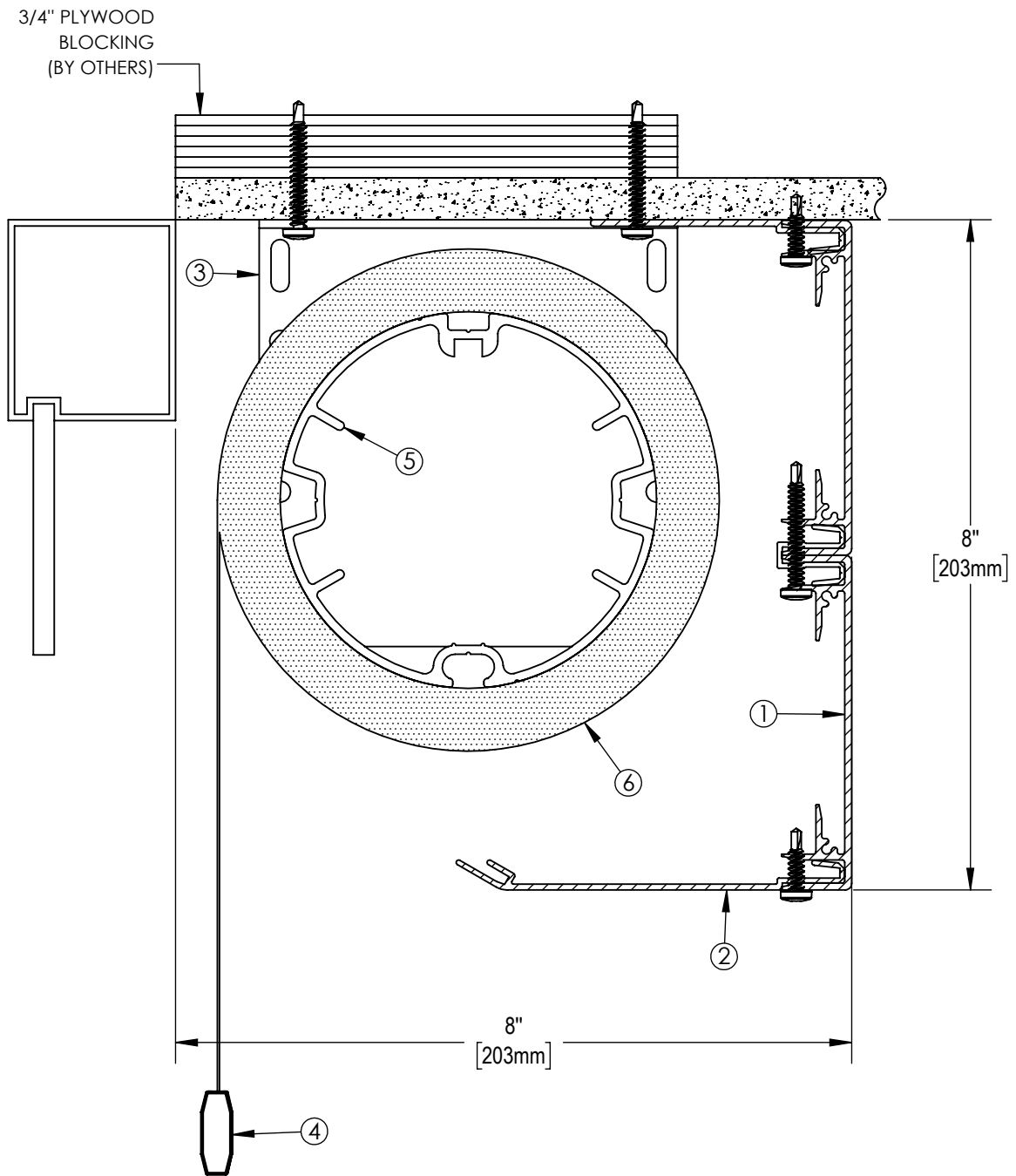


**SOLARFECTIVE**

Legrand Customer Service Information  
Phone: 833-456-4291  
Email: shading.cs@legrand.us

**ES SHADE 6 WITH CEILING MOUNT FASCIA**

DATE:	SCALE:	DOCUMENT NUMBER:	REVISION:
APR 1, 2019	1:2	SF-ES2	-



**NOTES:**

1. EXTRUDED ALUMINUM 8" FASCIA
2. 5" EXTRUDED ALUMINUM CLOSURE
3. END BRACKET
4. EXTRUDED ALUMINUM EXTERIOR HEMBAR
5. FABRIC: 1%, 3%, 5%, 10% OPENNESS OR BLACKOUT

**\*\* NOTE \*\***

JUNCTION BOX TO BE LOCATED  
WITHIN 3 FT OF MOTOR LOCATION.  
MOTOR LOCATION TO BE DETERMINED  
BY SOLARFECTIVE REPRESENTATIVE.



**SOLARFECTIVE**

Legrand Customer Service Information  
Phone: 833-456-4291  
Email: shading.cs@legrand.us

**MOTORIZED SHADE WITH CEILING MOUNT 8" FASCIA**

DATE:

APR 1, 2019

SCALE:

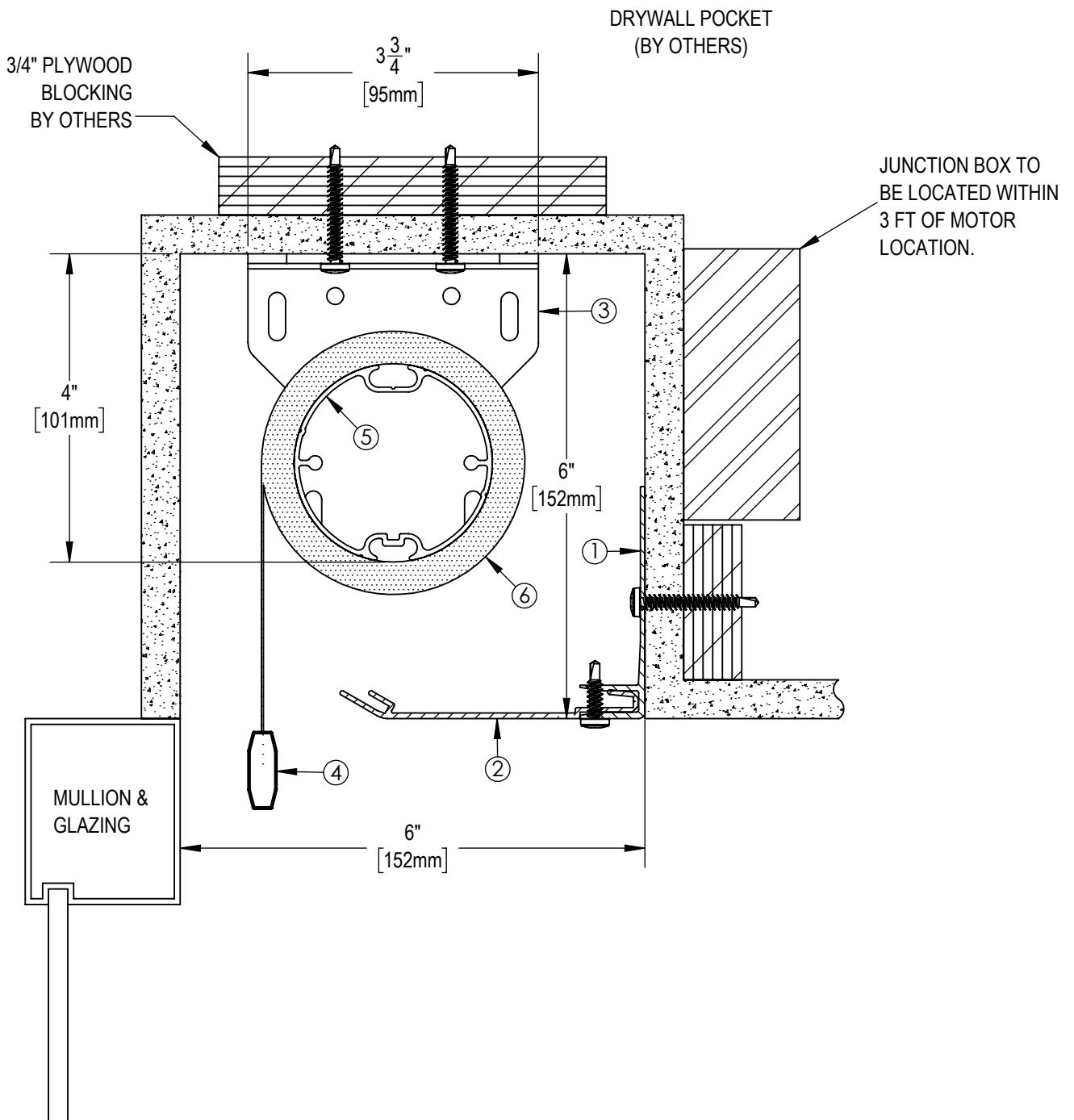
1:2

DOCUMENT NUMBER:

SF-ES2-8x8

REVISION:

-



**NOTES:**

1. EXTRUDED ALUMINUM HANGER
2. 4" EXTRUDED ALUMINUM CLOSURE
3. END BRACKET
4. EXTRUDED ALUMINUM EXTERIOR HEMBAR
5. 2 1/2" OR 3 1/2"  $\phi$  EXTRUDED ALUMINUM TUBE
6. FABRIC: 1%, 3%, 5%, 10% OPENNESS OR BLACKOUT

**\*\* NOTE \*\***

JUNCTION BOX TO BE LOCATED WITHIN 3 FT OF MOTOR LOCATION. MOTOR LOCATION TO BE DETERMINED WITH SOLARFACTIVE REPRESENTATIVE.



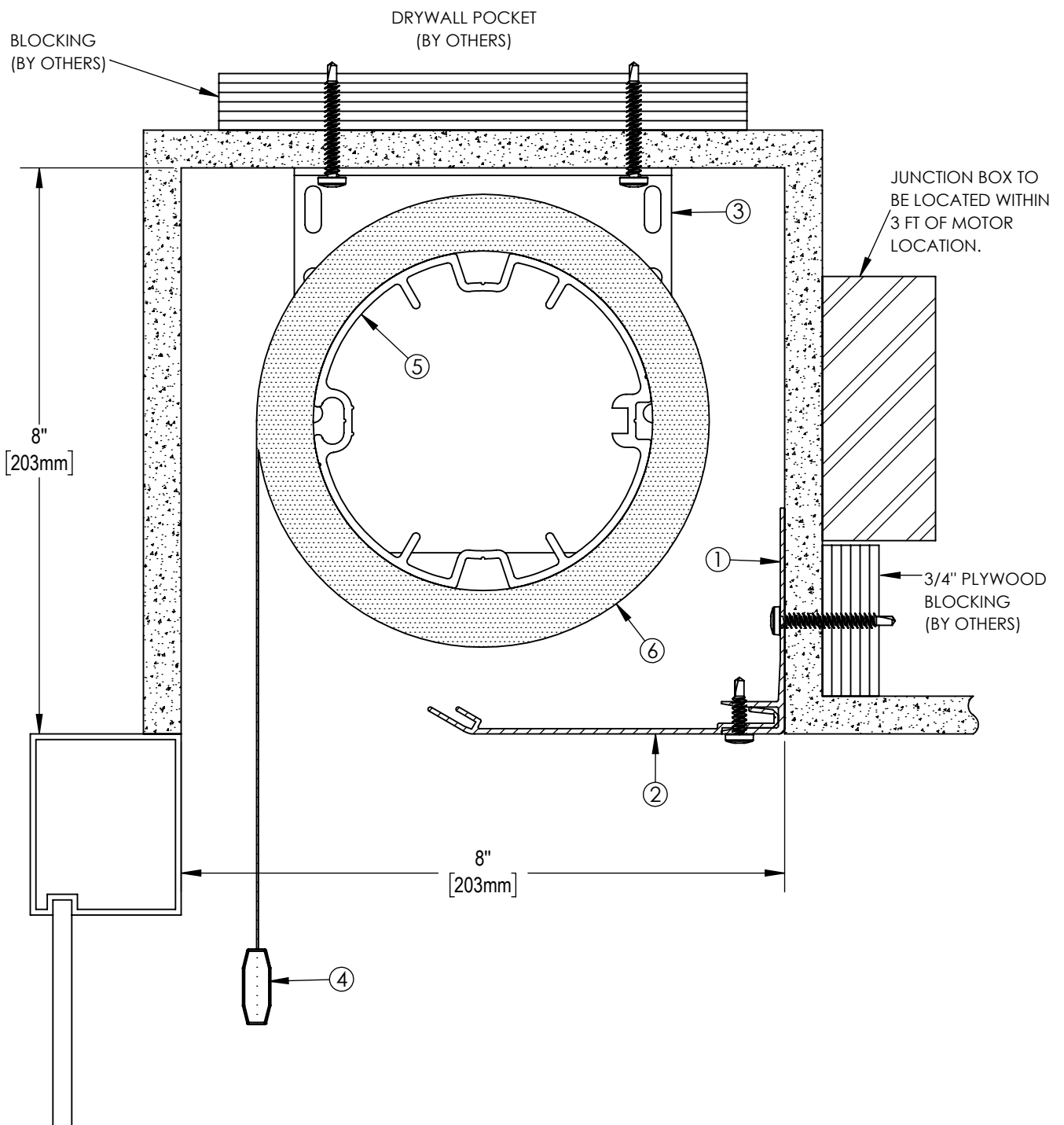
**SOLARFACTIVE**

Legrand Customer Service Information  
Phone: 833-456-4291  
Email: shading.cs@legrand.us

**ES SHADE 6 IN POCKET**

DATE:	SCALE:	DOCUMENT NUMBER:	REVISION:
APR 1, 2019	1:2	SF-ES3	-





**NOTES:**

1. EXTRUDED ALUMINUM HANGER
2. 5" EXTRUDED ALUMINUM CLOSURE
3. END BRACKET
4. EXTRUDED ALUMINUM EXTERIOR HEMBAR
5. 4 1/2" Ø TUBE
6. FABRIC

**\*\* NOTE \*\***

JUNCTION BOX TO BE LOCATED WITHIN 3 FT OF MOTOR LOCATION. MOTOR LOCATION TO BE DETERMINED WITH SOLARFACTIVE REPRESENTATIVE.



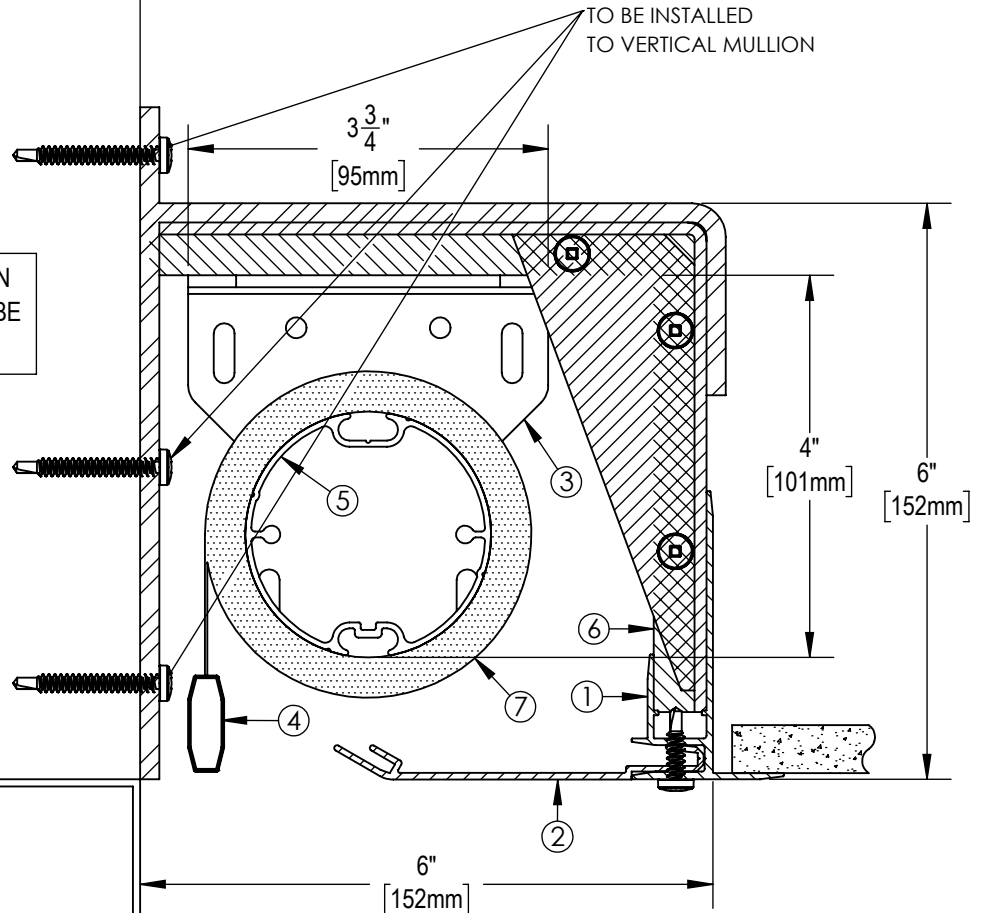
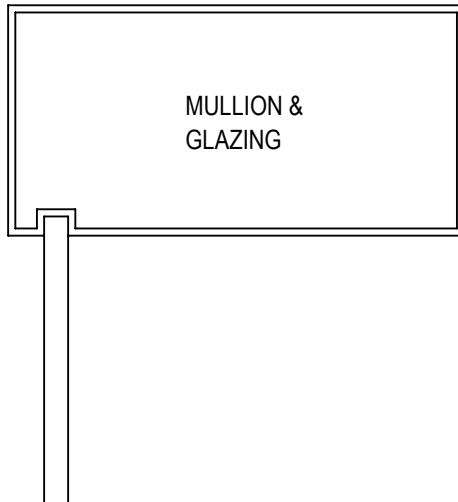
**SOLARFACTIVE**

Legrand Customer Service Information  
Phone: 833-456-4291  
Email: shading.cs@legrand.us

**MOTORIZED SHADE IN POCKET**

DATE:	SCALE:	DOCUMENT NUMBER:	REVISION:
APR 1, 2019	1:2	SF-ES3-8x8	-

IF NO VERTICAL MULLION  
EXIST BLOCKING MUST BE  
ADDED BY OTHERS



EXTRUDED ALUMINUM HANGER NOT FOR  
SUPPORTING THE WEIGHT OF THE CEILING

**NOTES:**

1. EXTRUDED ALUMINUM HANGER
2. 4" EXTRUDED ALUMINUM CLOSURE
3. END BRACKET
4. EXTRUDED ALUMINUM EXTERIOR HEMBAR
5. 2 1/2" OR 3 1/2"  $\phi$  EXTRUDED ALUMINUM TUBE
6. ALUMINUM RACEWAY
7. FABRIC: 1%, 3%, 5%, 10% OPENNESS OR BLACKOUT

**\*\* NOTE \*\***

JUNCTION BOX TO BE LOCATED WITHIN  
3 FT OF MOTOR LOCATION. MOTOR  
LOCATION TO BE DETERMINED WITH  
SOLARFECTIVE REPRESENTATIVE.



**SOLARFECTIVE**

Legrand Customer Service Information  
Phone: 833-456-4291  
Email: shading.cs@legrand.us

**ES SHADE 6 WITH RACEWAY  
POCKET SYSTEM**

DATE:

APR 1, 2019

SCALE:

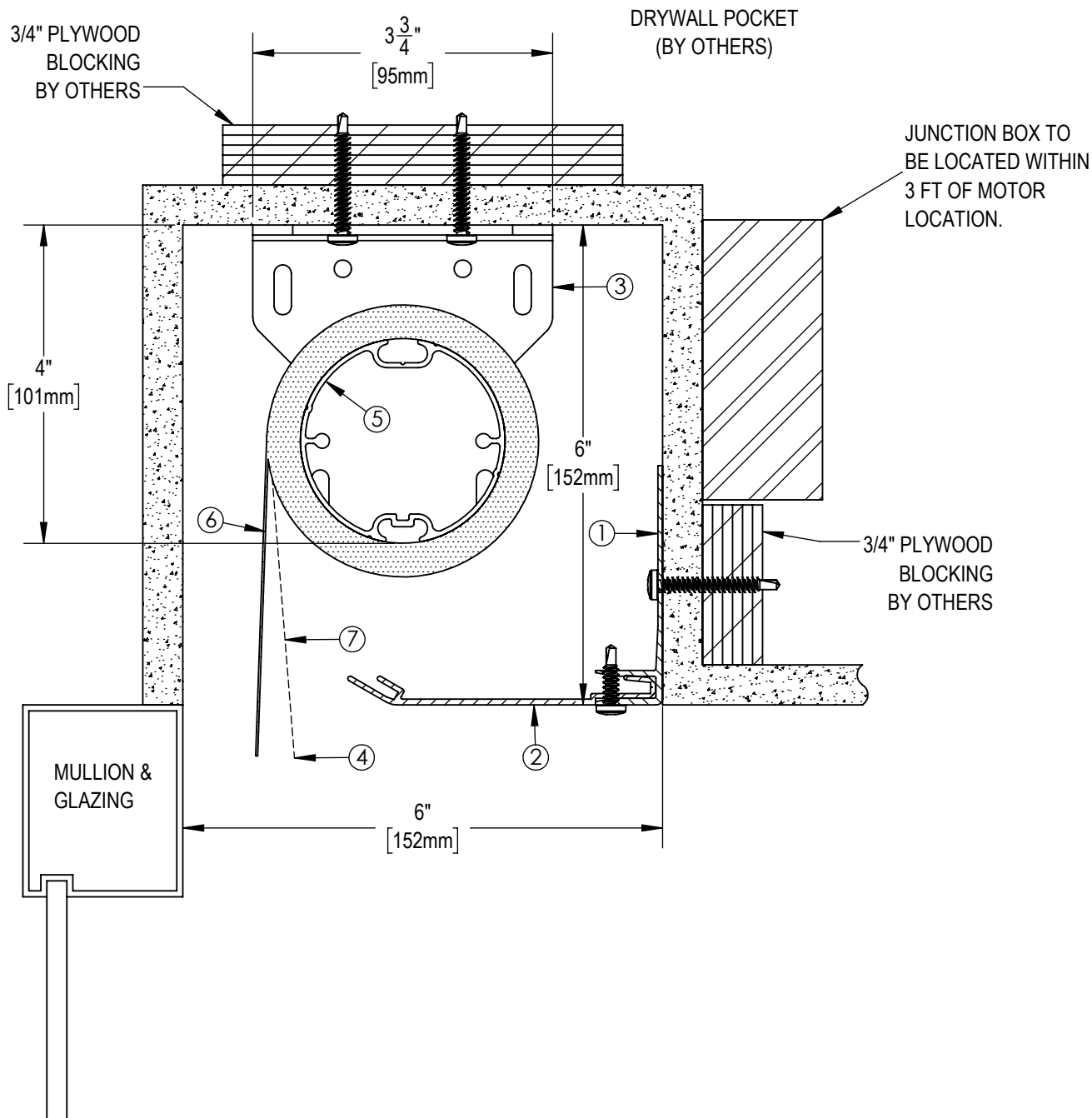
1:2

DOCUMENT NUMBER:

SF-ES3A

REVISION:

-



**NOTES:**

1. EXTRUDED ALUMINUM HANGER
2. 4" EXTRUDED ALUMINUM CLOSURE
3. END BRACKET
4. 1/2" EXTRUDED ALUMINUM HEMTUBE
5. 2 1/2" OR 3 1/2"  $\phi$  EXTRUDED ALUMINUM TUBE
6. FABRIC: 1%, 3%, 5%, 10% OPENNESS OR BLACKOUT
7. FABRIC: 1%, 3%, 5%, 10% OPENNESS OR BLACKOUT

**\*\* NOTE \*\***

JUNCTION BOX TO BE LOCATED WITHIN 3 FT OF MOTOR LOCATION. MOTOR LOCATION TO BE DETERMINED WITH SOLARFECTIVE REPRESENTATIVE.



**SOLARFECTIVE**

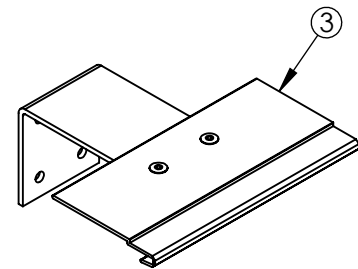
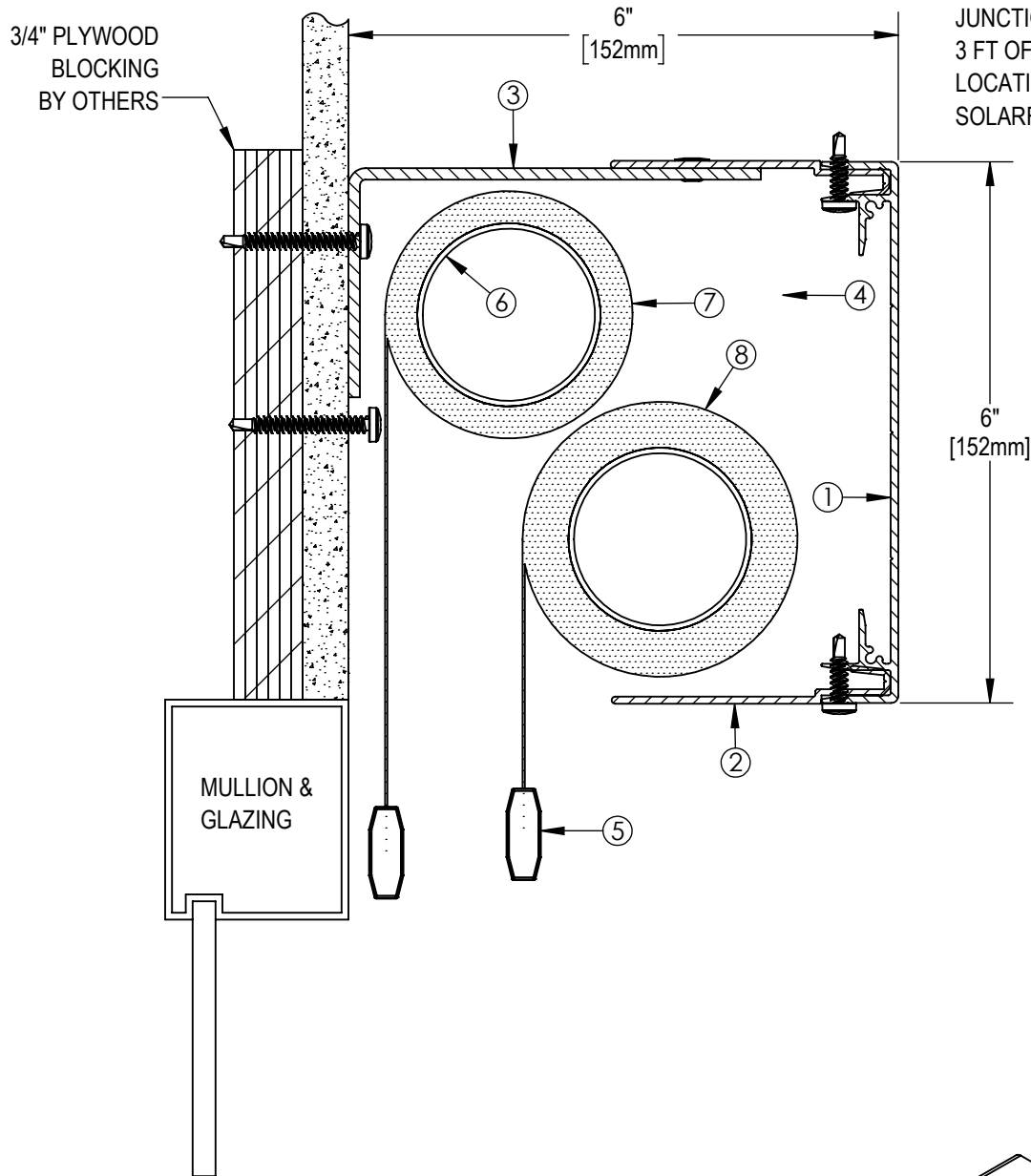
Legrand Customer Service Information  
Phone: 833-456-4291  
Email: shading.cs@legrand.us

**ES SHADE 6 DUPLEX IN POCKET**

DATE:	SCALE:	DOCUMENT NUMBER:	REVISION:
APR 1, 2019	1:2	SF-ES4	-

**\*\* NOTE \*\***

JUNCTION BOX TO BE LOCATED WITHIN 3 FT OF MOTOR LOCATION. MOTOR LOCATION TO BE DETERMINED WITH SOLARFECTIVE REPRESENTATIVE.



ISO VIEW OF MOUNTING ANGLE  
ONE AT EACH END.

**NOTES:**

1. EXTRUDED ALUMINUM 6" FASCIA
2. 4" EXTRUDED ALUMINUM CLOSURE
3. MOUNTING ANGLE
4. END BRACKET
5. EXTRUDED ALUMINUM EXTERIOR HEMBAR
6. 2"  $\phi$  EXTRUDED ALUMINUM TUBE
7. FABRIC: 1%, 3%, 5%, 10% OPENNESS OR BLACKOUT
8. FABRIC: 1%, 3%, 5%, 10% OPENNESS OR BLACKOUT



**SOLARFECTIVE**

Legrand Customer Service Information  
Phone: 833-456-4291  
Email: shading.cs@legrand.us

**ES SHADE 4 DUAL SYSTEM  
WITH FACE MOUNT FASCIA**

DATE:

APR 1, 2019

SCALE:

1:2

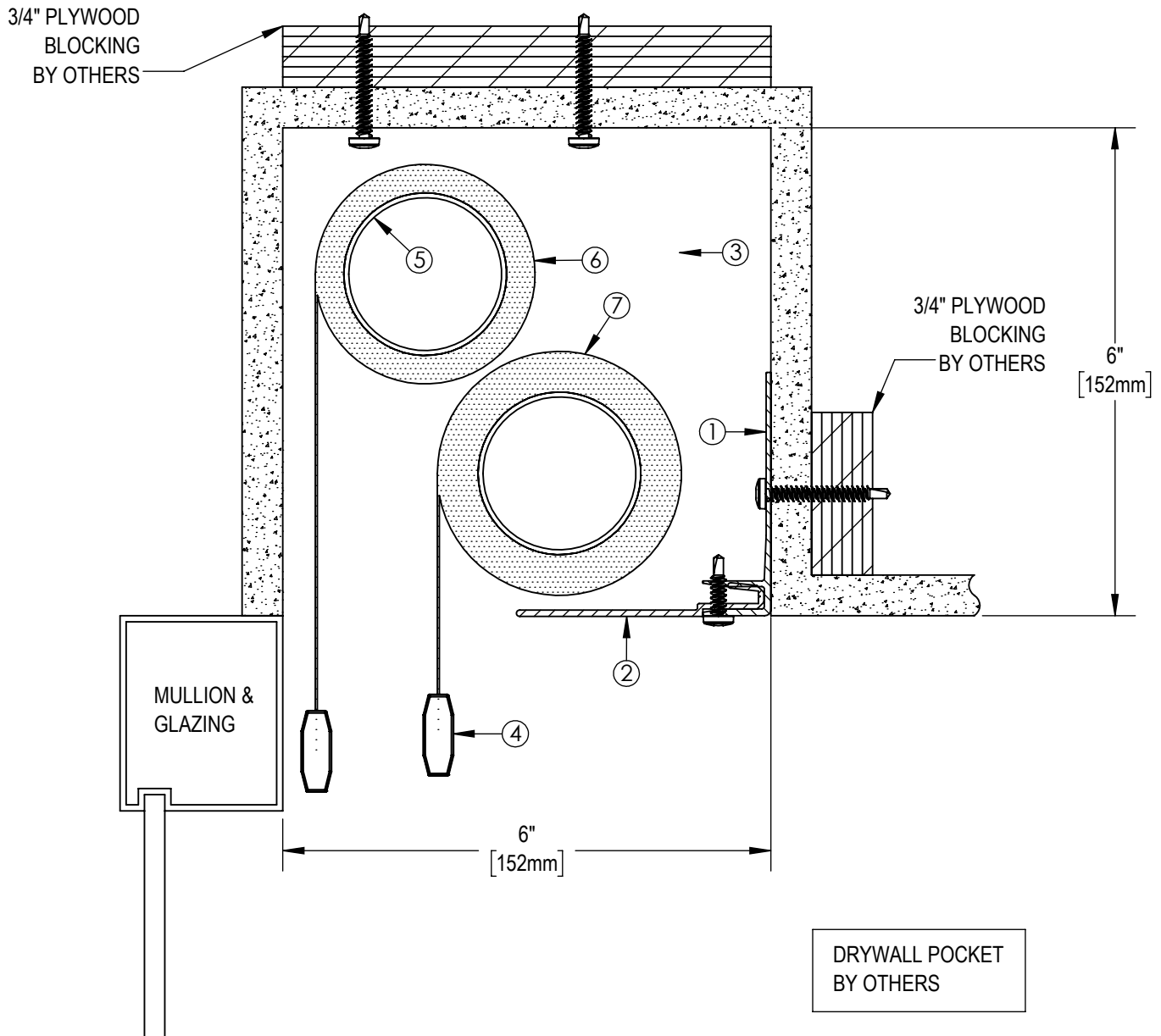
DOCUMENT NUMBER:

SF-ES5

REVISION:

-

SHADE LIMITED IN WIDTH  
AND IN HEIGHT



**NOTES:**

1. EXTRUDED ALUMINUM HANGER
2. 4" EXTRUDED ALUMINUM CLOSURE
3. END BRACKET
4. EXTRUDED ALUMINUM EXTERIOR HEMBAR
5. 2"  $\phi$  EXTRUDED ALUMINUM TUBE
6. FABRIC: 1%, 3%, 5%, 10% OPENNESS OR BLACKOUT
7. FABRIC: 1%, 3%, 5%, 10% OPENNESS OR BLACKOUT

**\*\* NOTE \*\***

JUNCTION BOX TO BE LOCATED WITHIN  
3 FT OF MOTOR LOCATION. MOTOR  
LOCATION TO BE DETERMINED WITH  
SOLARFACTIVE REPRESENTATIVE.



**SOLARFACTIVE**

Legrand Customer Service Information  
Phone: 833-456-4291  
Email: shading.cs@legrand.us

**ES SHADE 4 DUAL SYSTEM IN POCKET**

DATE:

APR 1, 2019

SCALE:

1:2

DOCUMENT NUMBER:

SF-ES5A

REVISION:

-

3/4" PLYWOOD  
BLOCKING  
BY OTHERS

DRYWALL POCKET  
(BY OTHERS)

10"  
[254mm]

JUNCTION BOX TO  
BE LOCATED WITHIN  
3 FT OF MOTOR  
LOCATION.

3/4" PLYWOOD  
BLOCKING  
BY OTHERS

MULLION &  
GLAZING

7"  
[178mm]

**NOTES:**

1. EXTRUDED ALUMINUM HANGER
2. 4" EXTRUDED ALUMINUM CLOSURE
3. END BRACKET
4. EXTRUDED ALUMINUM EXTERIOR HEMBAR
5. 2 1/2"  $\phi$  EXTRUDED ALUMINUM TUBE
6. ALUMINUM RACEWAY
7. FABRIC: 1%, 3%, 5%, 10% OPENNESS OR BLACKOUT
8. FABRIC: 1%, 3%, 5%, 10% OPENNESS OR BLACKOUT

**\*\* NOTE \*\***

JUNCTION BOX TO BE LOCATED WITHIN  
3 FT OF MOTOR LOCATION. MOTOR  
LOCATION TO BE DETERMINED WITH  
SOLARFECTIVE REPRESENTATIVE.



**SOLARFECTIVE**

Legrand Customer Service Information  
Phone: 833-456-4291  
Email: shading.cs@legrand.us

**ES SHADE 5 DUAL SYSTEM IN POCKET**

DATE:

APR 1, 2019

SCALE:

1:2

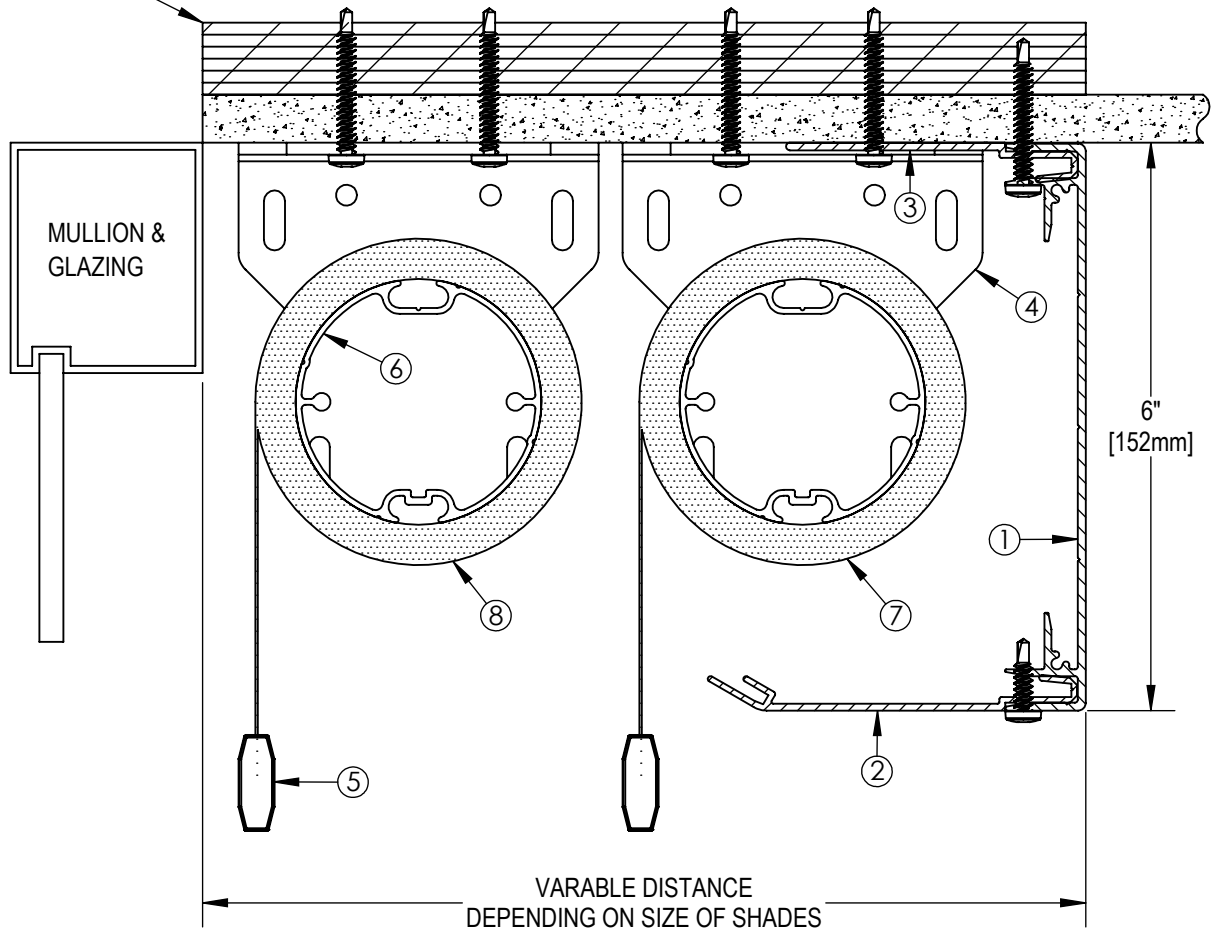
DOCUMENT NUMBER:

SF-ES6

REVISION:

-

3/4" PLYWOOD  
BLOCKING  
BY OTHERS



**NOTES:**

1. EXTRUDED ALUMINUM 6" FASCIA
2. 4" EXTRUDED ALUMINUM CLOSURE
3. MOUNTING ANGLE
4. END BRACKET
5. EXTRUDED ALUMINUM EXTERIOR HEMBAR
6. 2 1/2" OR 3 1/2"  $\phi$  EXTRUDED ALUMINUM TUBE
7. FABRIC: 1%, 3%, 5%, 10% OPENNESS OR BLACKOUT
8. FABRIC: 1%, 3%, 5%, 10% OPENNESS OR BLACKOUT

**\*\* NOTE \*\***

JUNCTION BOX TO BE LOCATED WITHIN 3 FT OF MOTOR LOCATION. MOTOR LOCATION TO BE DETERMINED WITH SOLARFECTIVE REPRESENTATIVE.



**SOLARFECTIVE**

Legrand Customer Service Information  
Phone: 833-456-4291  
Email: shading.cs@legrand.us

**ES SHADE 6 DUAL SYSTEM  
WITH HORIZONTAL CEILING MOUNT FASCIA**

DATE:

APR 1, 2019

SCALE:

1:2

DOCUMENT NUMBER:

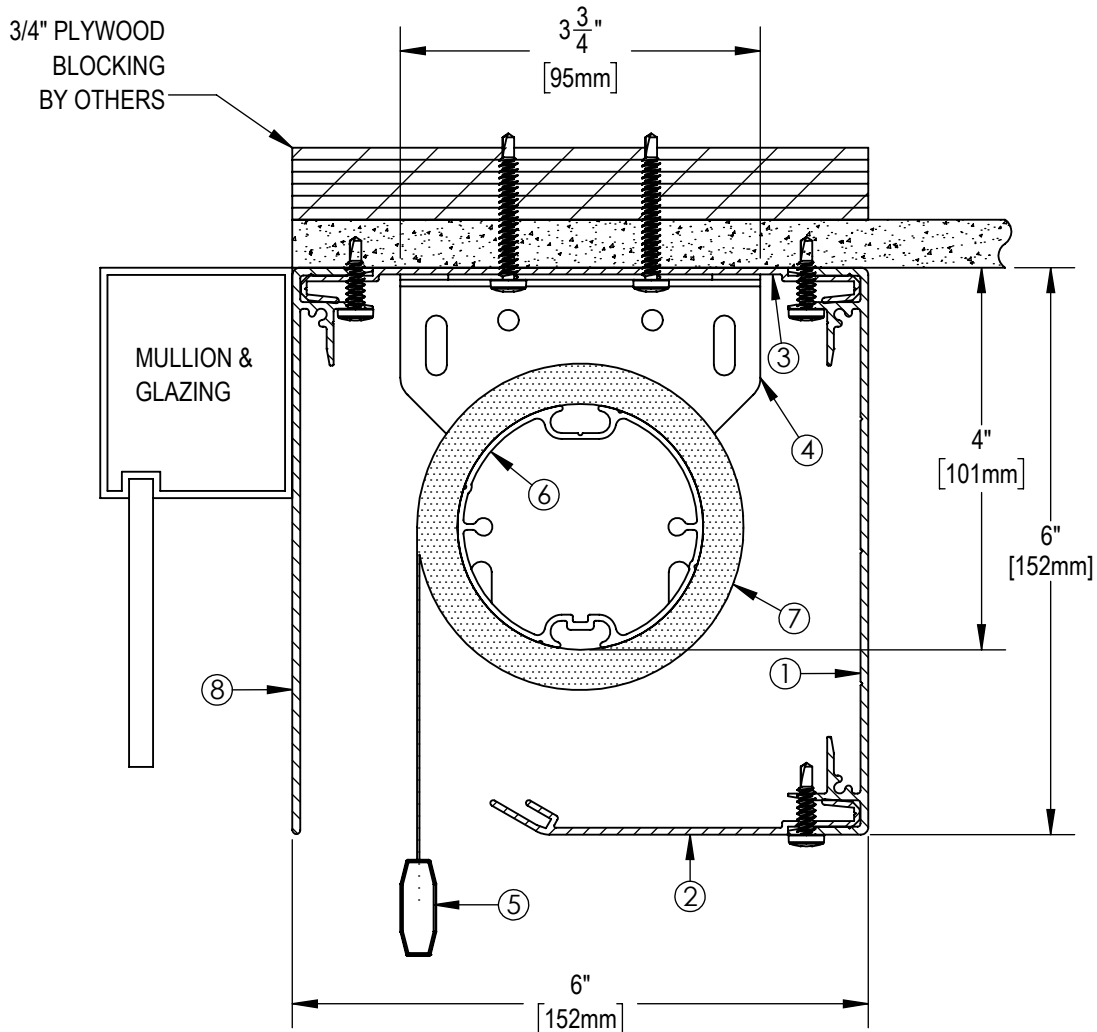
SF-ES7

REVISION:

-

**\*\* NOTE \*\***

JUNCTION BOX TO BE LOCATED WITHIN  
3 FT OF MOTOR LOCATION. MOTOR  
LOCATION TO BE DETERMINED WITH  
SOLARFECTIVE REPRESENTATIVE.



**NOTES:**

1. EXTRUDED ALUMINUM 6" FASCIA
2. 4" EXTRUDED ALUMINUM CLOSURE
3. MOUNTING ANGLE
4. END BRACKET
5. EXTRUDED ALUMINUM EXTERIOR HEMBAR
6. 2 1/2" OR 3 1/2"  $\phi$  EXTRUDED ALUMINUM TUBE
7. FABRIC: 1%, 3%, 5%, 10% OPENNESS OR BLACKOUT
8. EXTRUDED ALUMINUM 6" BACK FASCIA



**SOLARFECTIVE**

Legrand Customer Service Information  
Phone: 833-456-4291  
Email: shading.cs@legrand.us

**ES SHADE 6 WITH CEILING MOUNT  
FRONT AND BACK FASCIA**

DATE:

APR 1, 2019

SCALE:

1:2

DOCUMENT NUMBER:

SF-ES9

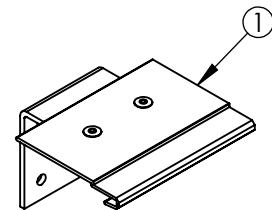
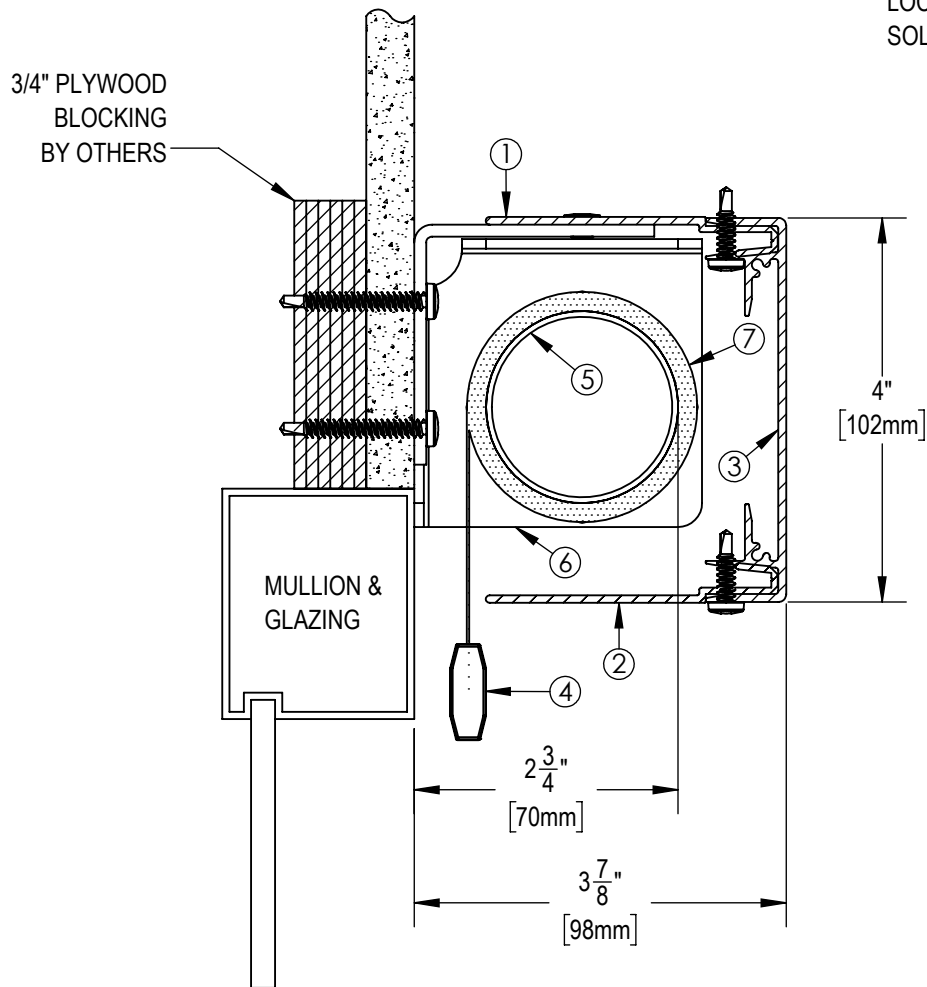
REVISION:

-



**\*\* NOTE \*\***

JUNCTION BOX TO BE LOCATED WITHIN  
3 FT OF MOTOR LOCATION. MOTOR  
LOCATION TO BE DETERMINED WITH  
SOLARFECTIVE REPRESENTATIVE.



ISO VIEW OF MOUNTING ANGLE  
ONE AT EACH END.

**NOTES:**

1. MOUNTING ANGLE
2. 2-5/8" EXTRUDED ALUMINUM CLOSURE
3. EXTRUDED ALUMINUM 4" FASCIA
4. EXTRUDED ALUMINUM EXTERIOR HEMBAR
5. 2"  $\phi$  EXTRUDED ALUMINUM TUBE
6. END BRACKET
7. FABRIC: 1%, 3%, 5%, 10% OPENNESS OR BLACKOUT

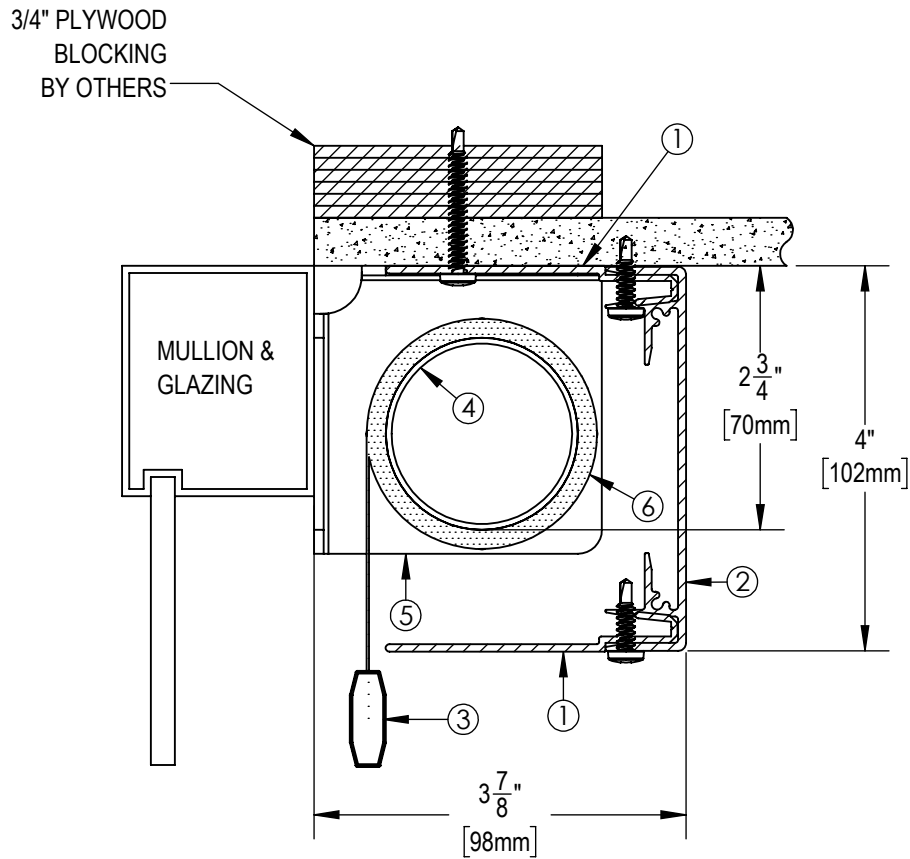


**SOLARFECTIVE**

Legrand Customer Service Information  
Phone: 833-456-4291  
Email: shading.cs@legrand.us

**ES SHADE 4 WITH FACE MOUNT FASCIA**

DATE:	SCALE:	DOCUMENT NUMBER:	REVISION:
APR 1, 2019	1:2	SF-ES10	-



**NOTES:**

1. 2-5/8" EXTRUDED ALUMINUM CLOSURE
2. EXTRUDED ALUMINUM 4" FASCIA
3. EXTRUDED ALUMINUM EXTERIOR HEMBAR
4. 2"  $\phi$  EXTRUDED ALUMINUM TUBE
5. END BRACKET
6. FABRIC: 1%, 3%, 5%, 10% OPENNESS OR BLACKOUT

**\*\* NOTE \*\***

JUNCTION BOX TO BE LOCATED WITHIN 3 FT OF MOTOR LOCATION. MOTOR LOCATION TO BE DETERMINED WITH SOLARFECTIVE REPRESENTATIVE.



**SOLARFECTIVE**

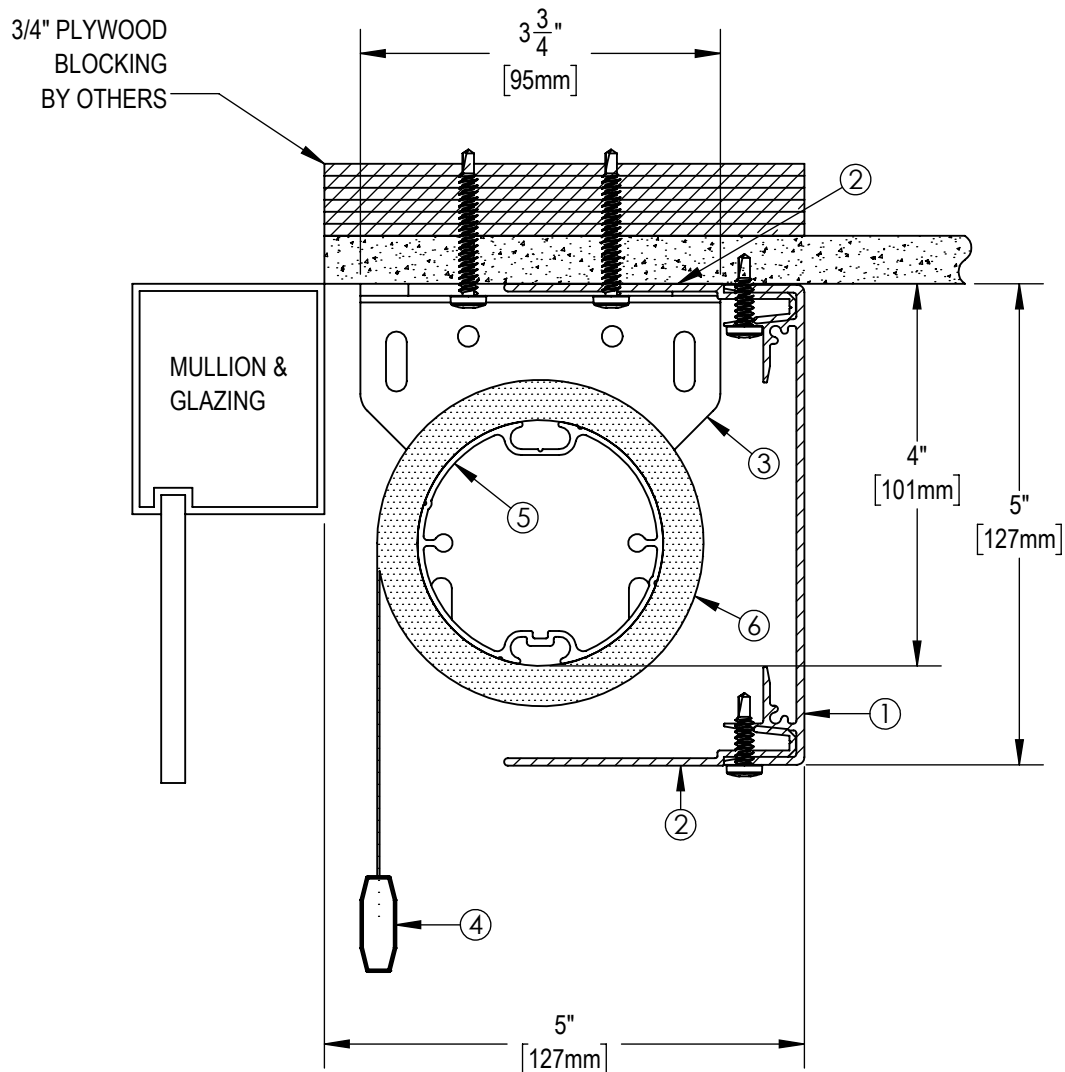
Legrand Customer Service Information  
Phone: 833-456-4291  
Email: shading.cs@legrand.us

**ES SHADE 4 WITH CEILING MOUNT FASCIA**

DATE:	SCALE:	DOCUMENT NUMBER:	REVISION:
APR 1, 2019	1:2	SF-ES11	-

**\*\* NOTE \*\***

JUNCTION BOX TO BE LOCATED WITHIN  
3 FT OF MOTOR LOCATION. MOTOR  
LOCATION TO BE DETERMINED WITH  
SOLARFECTIVE REPRESENTATIVE.



**NOTES:**

1. EXTRUDED ALUMINUM 5" FASCIA
2. 2-5/8" EXTRUDED ALUMINUM ENCLOSURE
3. END BRACKET
4. EXTRUDED ALUMINUM EXTERIOR HEMBAR
5. 2 1/2"  $\varnothing$  EXTRUDED ALUMINUM TUBE
6. FABRIC: 1%, 3%, 5%, 10% OPENNESS OR BLACKOUT



**SOLARFECTIVE**

Legrand Customer Service Information  
Phone: 833-456-4291  
Email: shading.cs@legrand.us

**ES SHADE 5 WITH CEILING MOUNT FASCIA**

DATE:

APR 1, 2019

SCALE:

1:2

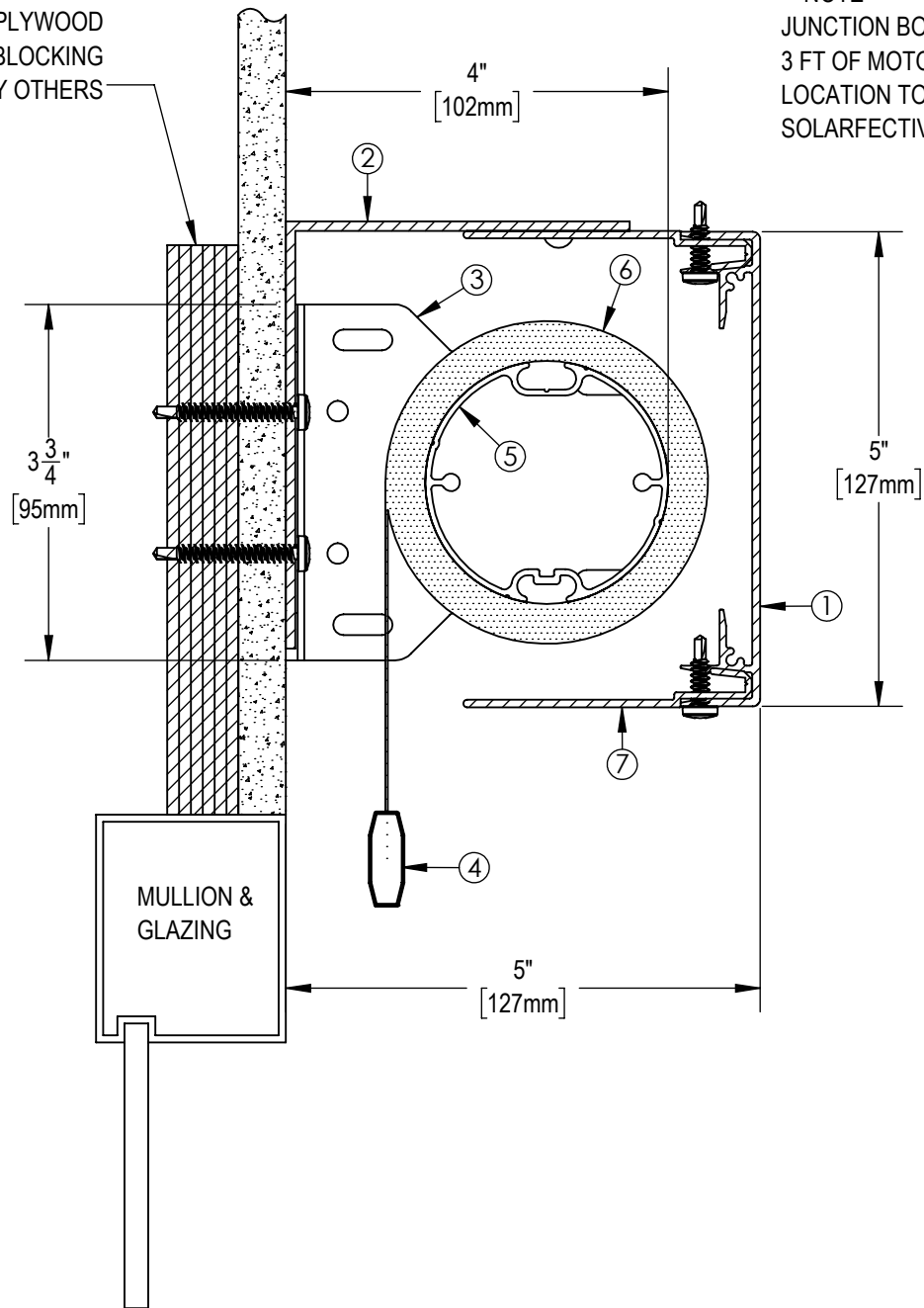
DOCUMENT NUMBER:

SF-ES12

REVISION:

-

3/4" PLYWOOD  
BLOCKING  
BY OTHERS



**\*\* NOTE \*\***

JUNCTION BOX TO BE LOCATED WITHIN  
3 FT OF MOTOR LOCATION. MOTOR  
LOCATION TO BE DETERMINED WITH  
SOLARFACTIVE REPRESENTATIVE.

**NOTES:**

1. EXTRUDED ALUMINUM 5" FASCIA
2. MOUNTING ANGLE
3. END BRACKET
4. EXTRUDED ALUMINUM EXTERIOR HEMBAR
5. 2 1/2"  $\varnothing$  EXTRUDED ALUMINUM TUBE
6. FABRIC: 1%, 3%, 5%, 10% OPENNESS OR BLACKOUT
7. 2-5/8" EXTRUDED ALUMINUM CLOSURE



**SOLARFACTIVE**

Legrand Customer Service Information  
Phone: 833-456-4291  
Email: shading.cs@legrand.us

**ES SHADE 5 WITH FACE MOUNT FASCIA**

DATE:

APR 1, 2019

SCALE:

1:2

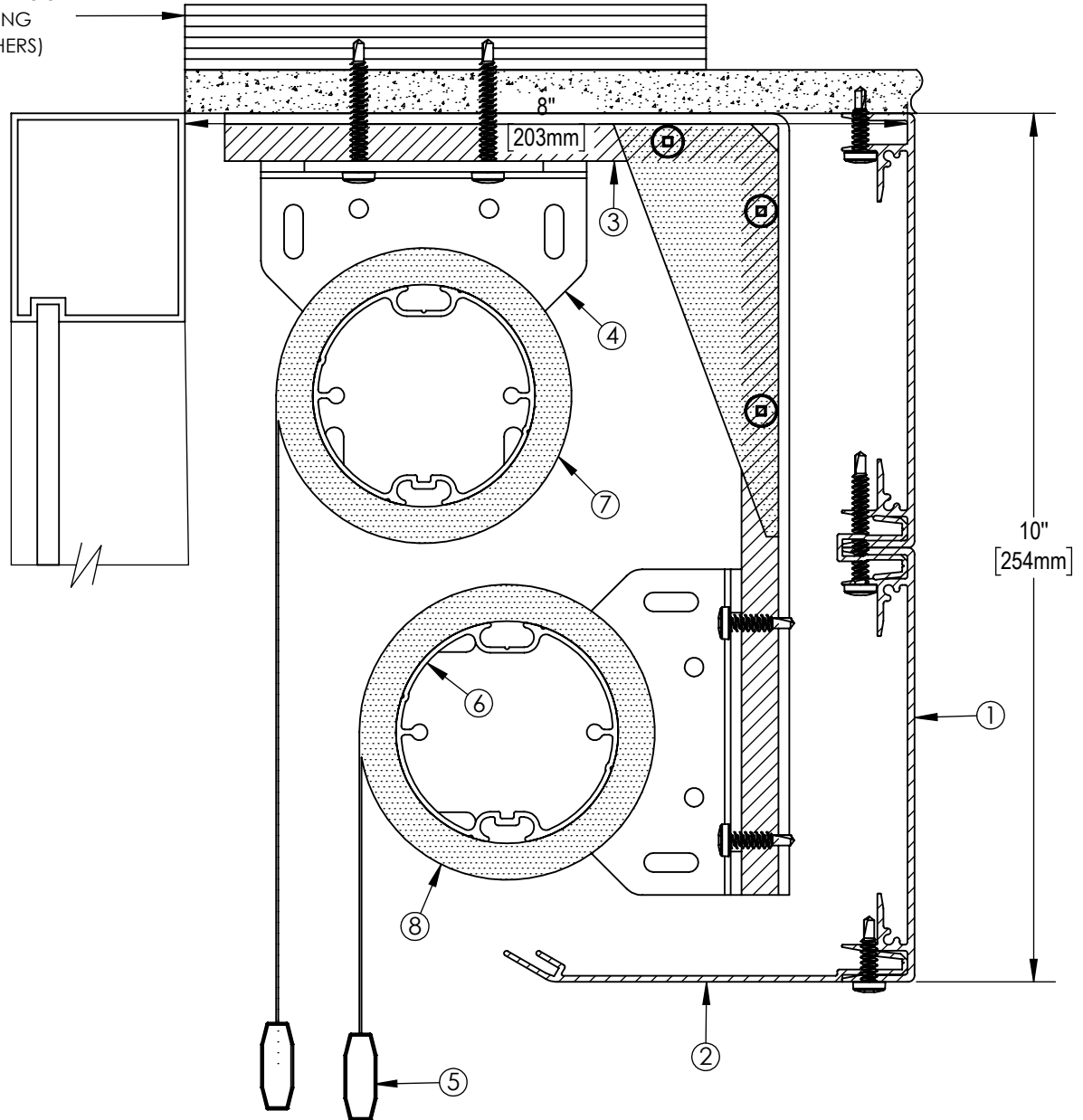
DOCUMENT NUMBER:

SF-ES13

REVISION:

-

3/4" PLYWOOD  
BLOCKING  
(BY OTHERS)



**NOTES:**

1. EXTRUDED ALUMINUM 10" FASCIA
2. 5" EXTRUDED ALUMINUM CLOSURE
3. ALUMINUM RACEWAY
4. END BRACKET
5. EXTRUDED ALUMINUM EXTERIOR HEMBAR
6. 2 1/2" Ø EXTRUDED ALUMINUM TUBE
7. FABRIC: 1%, 3%, 5%, 10% OPENNESS OR BLACKOUT
8. FABRIC: 1%, 3%, 5%, 10% OPENNESS OR BLACKOUT

**\*\* NOTE \*\***

JUNCTION BOX TO BE LOCATED WITHIN 3 FT OF MOTOR LOCATION. MOTOR LOCATION TO BE DETERMINED WITH SOLARFECTIVE REPRESENTATIVE.



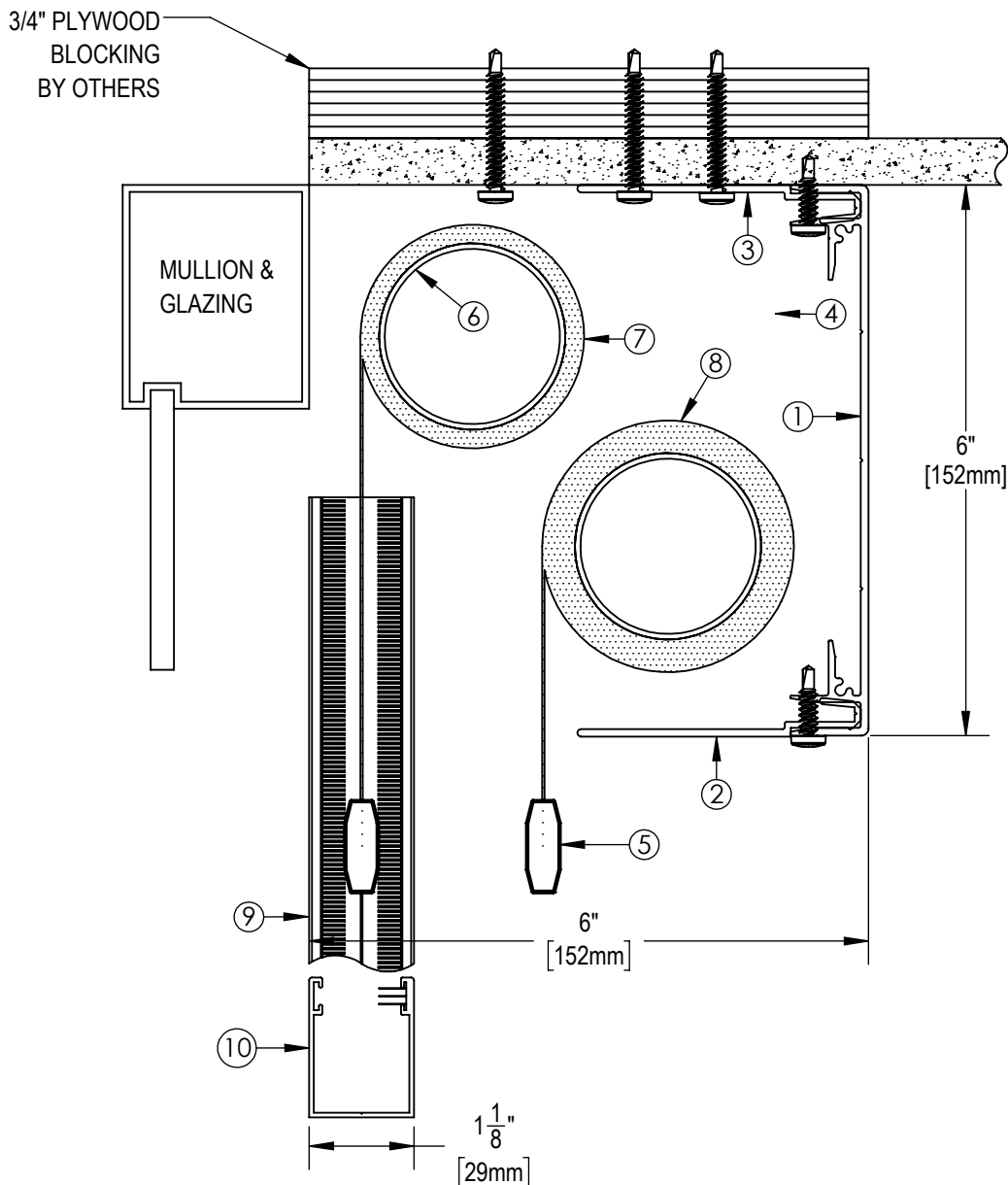
**SOLARFECTIVE**

Legrand Customer Service Information  
Phone: 833-456-4291  
Email: shading.cs@legrand.us

**ES SHADE 5 DUAL SYSTEM WITH FASCIA AND RACEWAY**

DATE:	SCALE:	DOCUMENT NUMBER:	REVISION:
APR 1, 2019	1:2	SF-ES15	-

SHADE LIMITED IN WIDTH  
AND IN HEIGHT



**NOTES:**

1. EXTRUDED ALUMINUM 6" FASCIA
2. 4" EXTRUDED ALUMINUM CLOSURE
3. MOUNTING ANGLE
4. END BRACKET
5. EXTRUDED ALUMINUM EXTERIOR HEMBAR
6. 2"  $\varnothing$  EXTRUDED ALUMINUM TUBE
7. FABRIC: 1%, 3%, 5%, 10% OPENNESS OR BLACKOUT
8. FABRIC: 1%, 3%, 5%, 10% OPENNESS OR BLACKOUT
9. MOTORIZED BLACKOUT SIDE CHANNEL
10. MANUAL BLACKOUT BOTTOM CHANNEL

**\*\* NOTE \*\***

JUNCTION BOX TO BE LOCATED WITHIN  
3 FT OF MOTOR LOCATION. MOTOR  
LOCATION TO BE DETERMINED WITH  
SOLARFECTIVE REPRESENTATIVE.



**SOLARFECTIVE**

Legrand Customer Service Information  
Phone: 833-456-4291  
Email: shading.cs@legrand.us

**ES SHADE 4 DUAL SYSTEM WITH CEILING MOUNT  
FASCIA, SIDE AND BOTTOM CHANNELS**

DATE:

APR 1, 2019

SCALE:

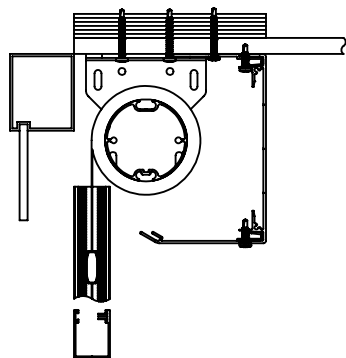
1:2

DOCUMENT NUMBER:

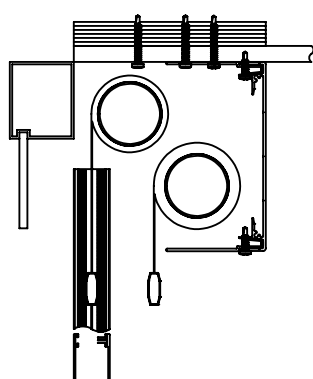
SF-RD7A

REVISION:

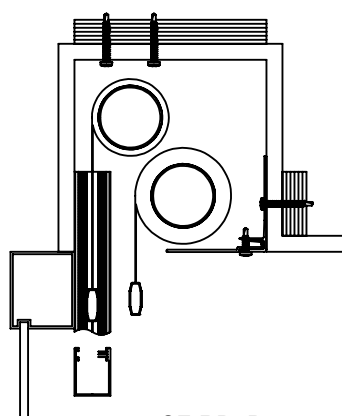
-



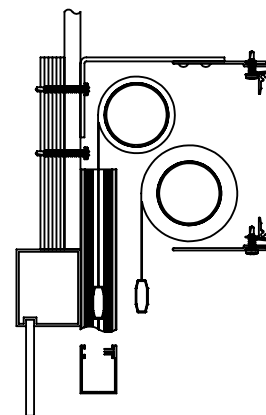
SF-RD6



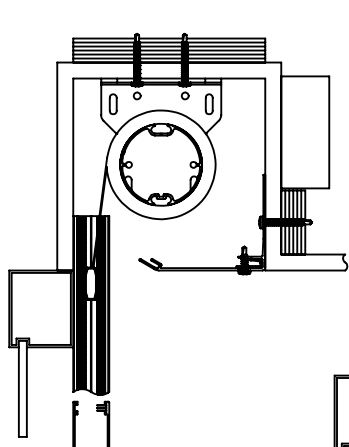
SF-RD7A



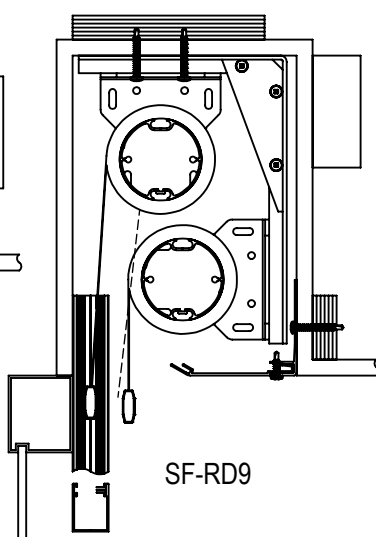
SF-RD7P



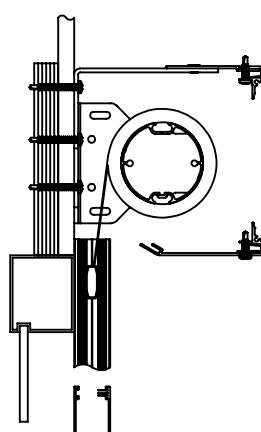
SF-RD7FM



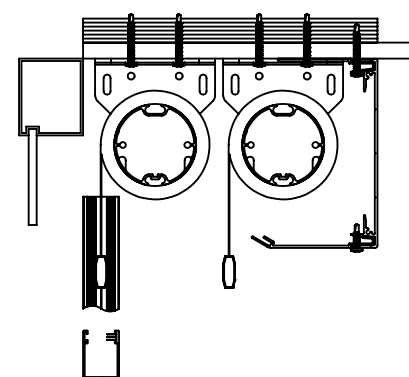
SF-RD8



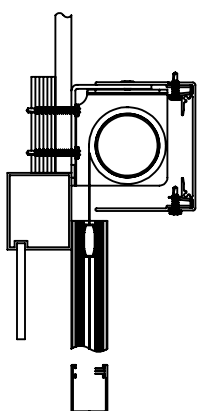
SF-RD9



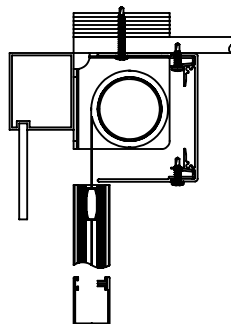
SF-RD10



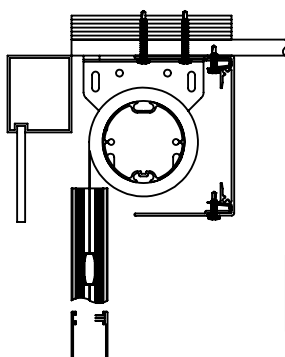
SF-RD15



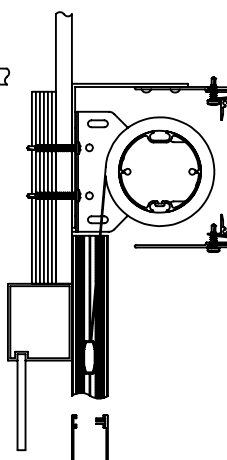
SF-RD16



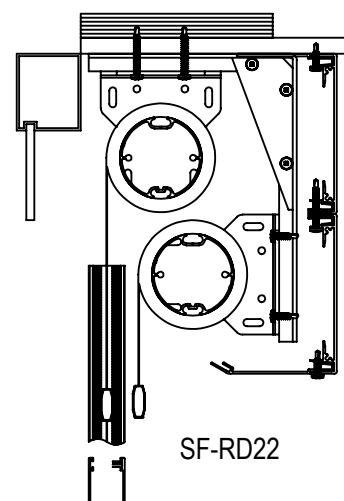
SF-RD17



SF-RD18



SF-RD19



SF-RD22



# **SOLARFECTIVE**

Legrand Customer Service Information  
Phone: 833-456-4291  
Email: shading.cs@legrand.us

## **ES BLACKOUT SHADE SYSTEMS WITH BLACKOUT CHANNELS**

DATE:

APR 1, 2019

SCALE:

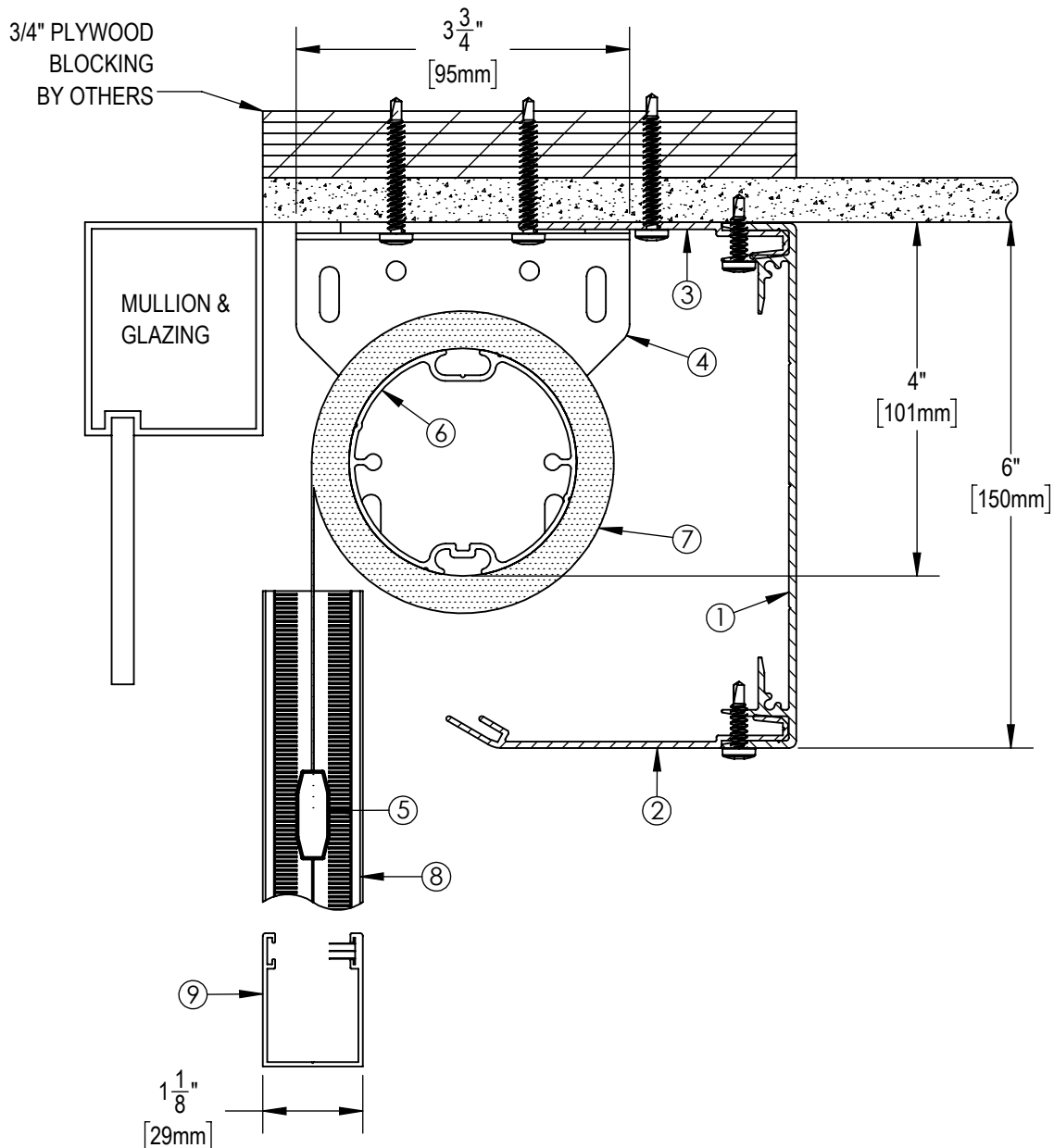
1:2

DOCUMENT NUMBER:

QM170167

REVISION:

-



**NOTES:**

1. EXTRUDED ALUMINUM 6" FASCIA
2. 4" EXTRUDED ALUMINUM CLOSURE
3. MOUNTING ANGLE
4. END BRACKET
5. EXTRUDED ALUMINUM EXTERIOR HEMBAR
6. 2 1/2" OR 3 1/2"  $\phi$  EXTRUDED ALUMINUM TUBE
7. FABRIC: 1%, 3%, 5%, 10% OPENNESS OR BLACKOUT
8. MOTORIZED BLACKOUT SIDE CHANNEL
9. MANUAL BLACKOUT BOTTOM CHANNEL

**\*\* NOTE \*\***

JUNCTION BOX TO BE LOCATED WITHIN 3 FT OF MOTOR LOCATION. MOTOR LOCATION TO BE DETERMINED WITH SOLARFACTIVE REPRESENTATIVE.



**SOLARFACTIVE**

Legrand Customer Service Information  
Phone: 833-456-4291  
Email: shading.cs@legrand.us

**ES SHADE 6 WITH CEILING MOUNT  
FASCIA, SIDE AND BOTTOM CHANNELS**

DATE:

APR 1, 2019

SCALE:

1:2

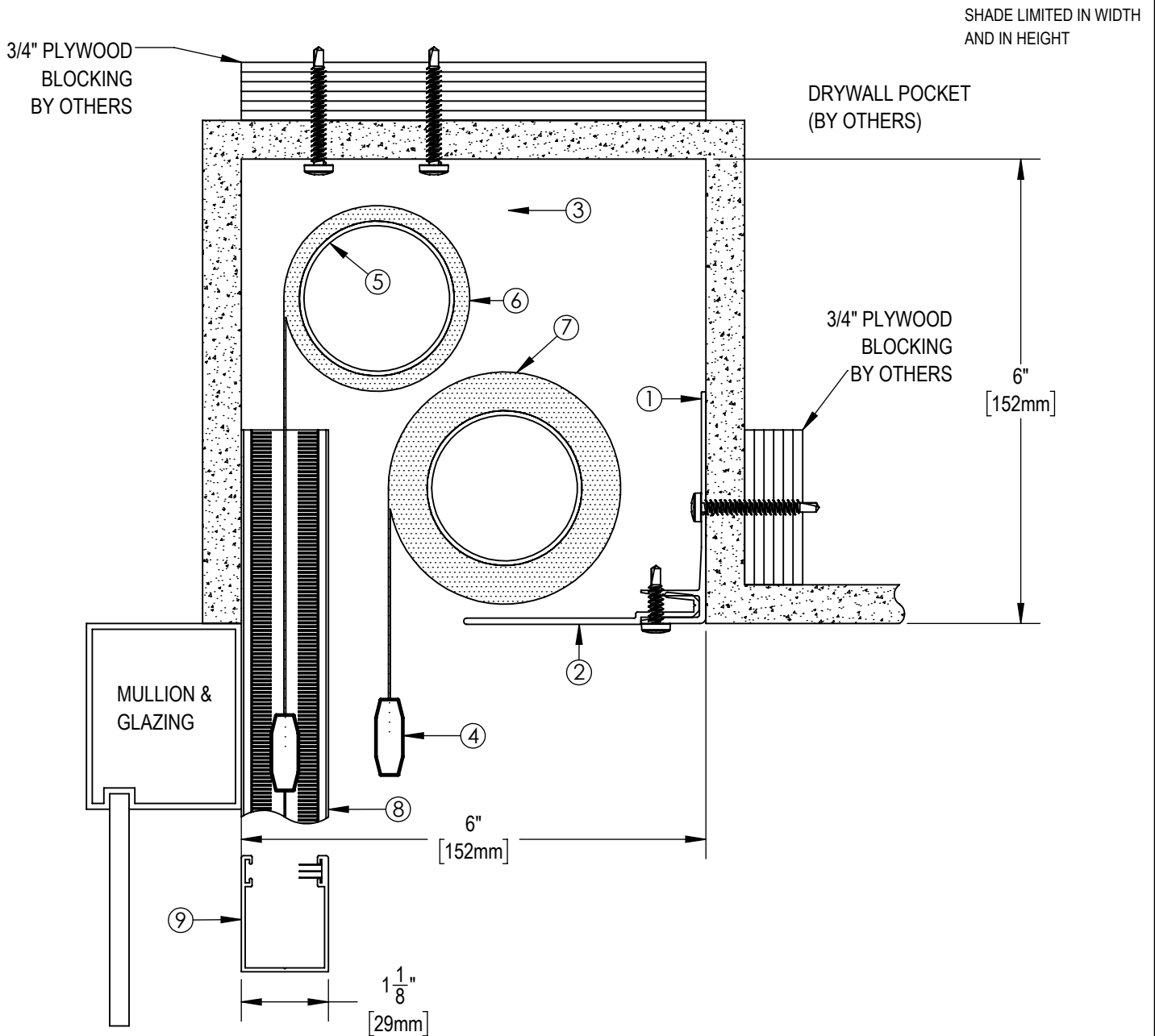
DOCUMENT NUMBER:

SF-RD6

REVISION:

-





#### NOTES:

1. EXTRUDED ALUMINUM 6" FASCIA
2. 4" EXTRUDED ALUMINUM CLOSURE
3. END BRACKET
4. EXTRUDED ALUMINUM EXTERIOR HEMBAR
5. 2"  $\phi$  EXTRUDED ALUMINUM TUBE
6. FABRIC: 1%, 3%, 5%, 10% OPENNESS OR BLACKOUT
7. FABRIC: 1%, 3%, 5%, 10% OPENNESS OR BLACKOUT
8. MOTORIZED BLACKOUT SIDE CHANNEL
9. MANUAL BLACKOUT BOTTOM CHANNEL

#### \*\* NOTE \*\*

JUNCTION BOX TO BE LOCATED WITHIN 3 FT OF MOTOR LOCATION. MOTOR LOCATION TO BE DETERMINED WITH SOLARFECTIVE REPRESENTATIVE.



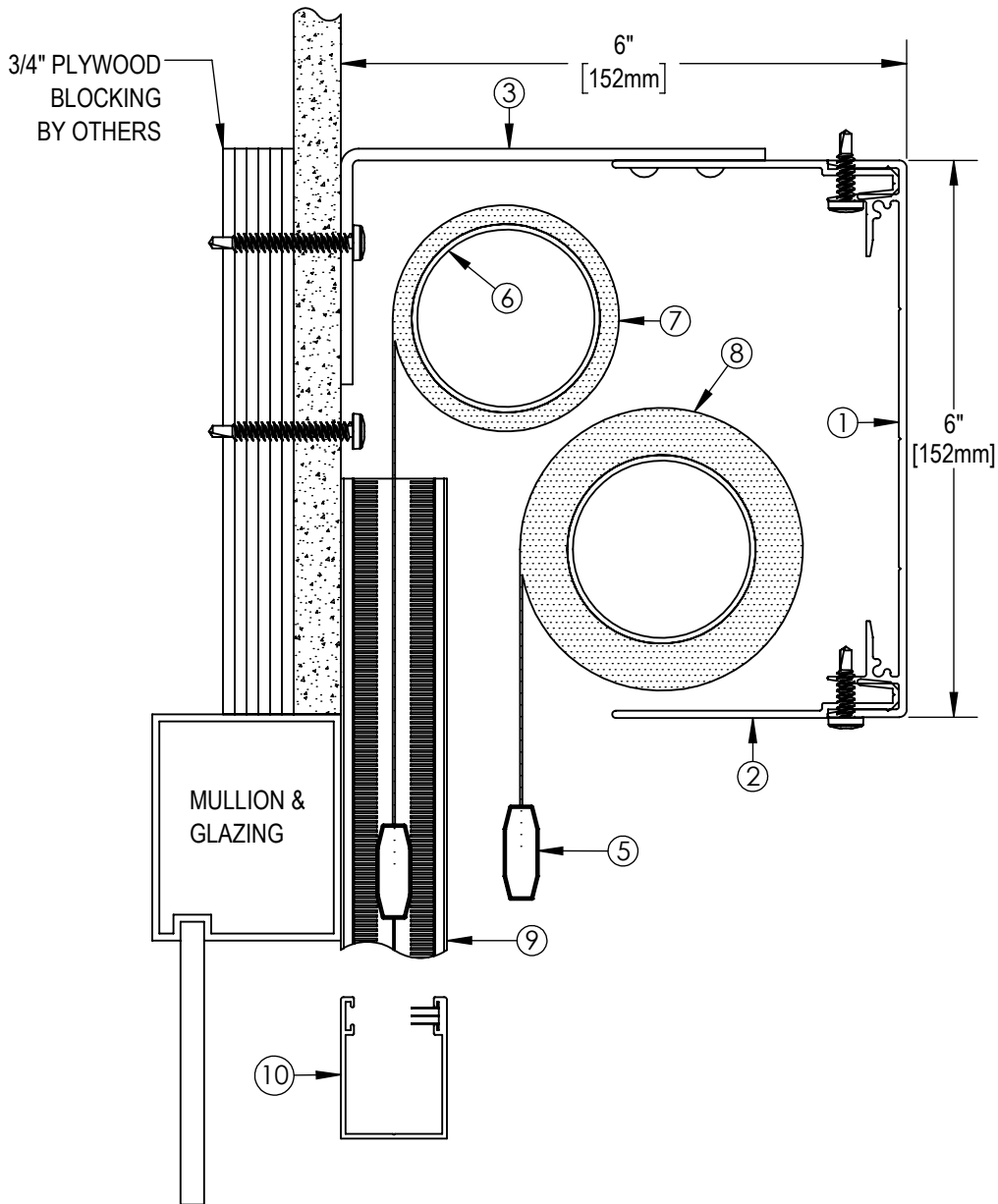
#### SOLARFECTIVE

Legrand Customer Service Information  
Phone: 833-456-4291  
Email: shading.cs@legrand.us

#### ES SHADE 4 DUAL SYSTEM IN POCKET SIDE AND BOTTOM CHANNELS

DATE:	SCALE:	DOCUMENT NUMBER:	REVISION:
APR 1, 2019	1:2	SF-RD7P	-

SHADE LIMITED IN WIDTH  
AND IN HEIGHT



**NOTES:**

1. EXTRUDED ALUMINUM 6" FASCIA
2. 4" EXTRUDED ALUMINUM CLOSURE
3. MOUNTING ANGLE
4. END BRACKET
5. EXTRUDED ALUMINUM EXTERIOR HEMBAR
6. 2"  $\varnothing$  EXTRUDED ALUMINUM TUBE
7. FABRIC: 1%, 3%, 5%, 10% OPENNESS OR BLACKOUT
8. FABRIC: 1%, 3%, 5%, 10% OPENNESS OR BLACKOUT
9. MOTORIZED BLACKOUT SIDE CHANNEL
10. MANUAL BLACKOUT BOTTOM CHANNEL

**\*\* NOTE \*\***

JUNCTION BOX TO BE LOCATED WITHIN  
3 FT OF MOTOR LOCATION. MOTOR  
LOCATION TO BE DETERMINED WITH  
SOLARFECTIVE REPRESENTATIVE.



**SOLARFECTIVE**

Legrand Customer Service Information  
Phone: 833-456-4291  
Email: shading.cs@legrand.us

**ES SHADE 4 DUAL SYSTEM WITH FACE MOUNT  
FASCIA, SIDE AND BOTTOM CHANNELS**

DATE:

APR 1, 2019

SCALE:

1:2

DOCUMENT NUMBER:

SF-RD7FM

REVISION:

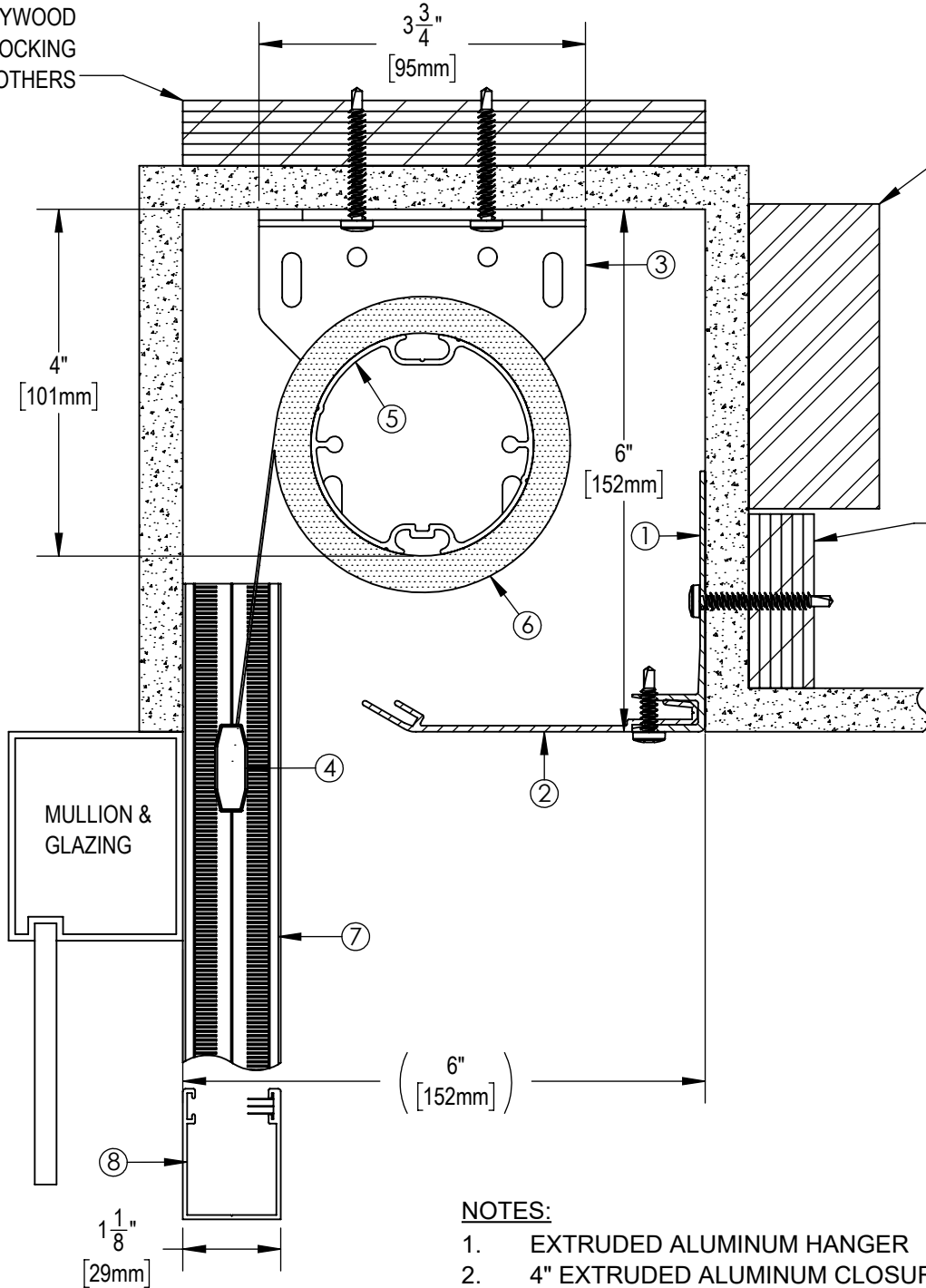
-

3/4" PLYWOOD  
BLOCKING  
BY OTHERS

DRYWALL POCKET  
(BY OTHERS)

JUNCTION BOX TO  
BE LOCATED WITHIN  
3 FT OF MOTOR  
LOCATION.

3/4" PLYWOOD  
BLOCKING  
BY OTHERS



**NOTES:**

1. EXTRUDED ALUMINUM HANGER
2. 4" EXTRUDED ALUMINUM CLOSURE
3. END BRACKET
4. EXTRUDED ALUMINUM EXTERIOR HEMBAR
5. 2 1/2" OR 3 1/2"  $\phi$  EXTRUDED ALUMINUM TUBE
6. FABRIC: 1%, 3%, 5%, 10% OPENNESS OR BLACKOUT
7. MOTORIZED BLACKOUT SIDE CHANNEL
8. MANUAL BLACKOUT BOTTOM CHANNEL

**\*\* NOTE \*\***

JUNCTION BOX TO BE LOCATED WITHIN  
3 FT OF MOTOR LOCATION. MOTOR  
LOCATION TO BE DETERMINED WITH  
SOLARFECTIVE REPRESENTATIVE.



**SOLARFECTIVE**

Legrand Customer Service Information  
Phone: 833-456-4291  
Email: shading.cs@legrand.us

**ES SHADE 6 IN POCKET  
SIDE AND BOTTOM CHANNELS**

DATE:

APR 1, 2019

SCALE:

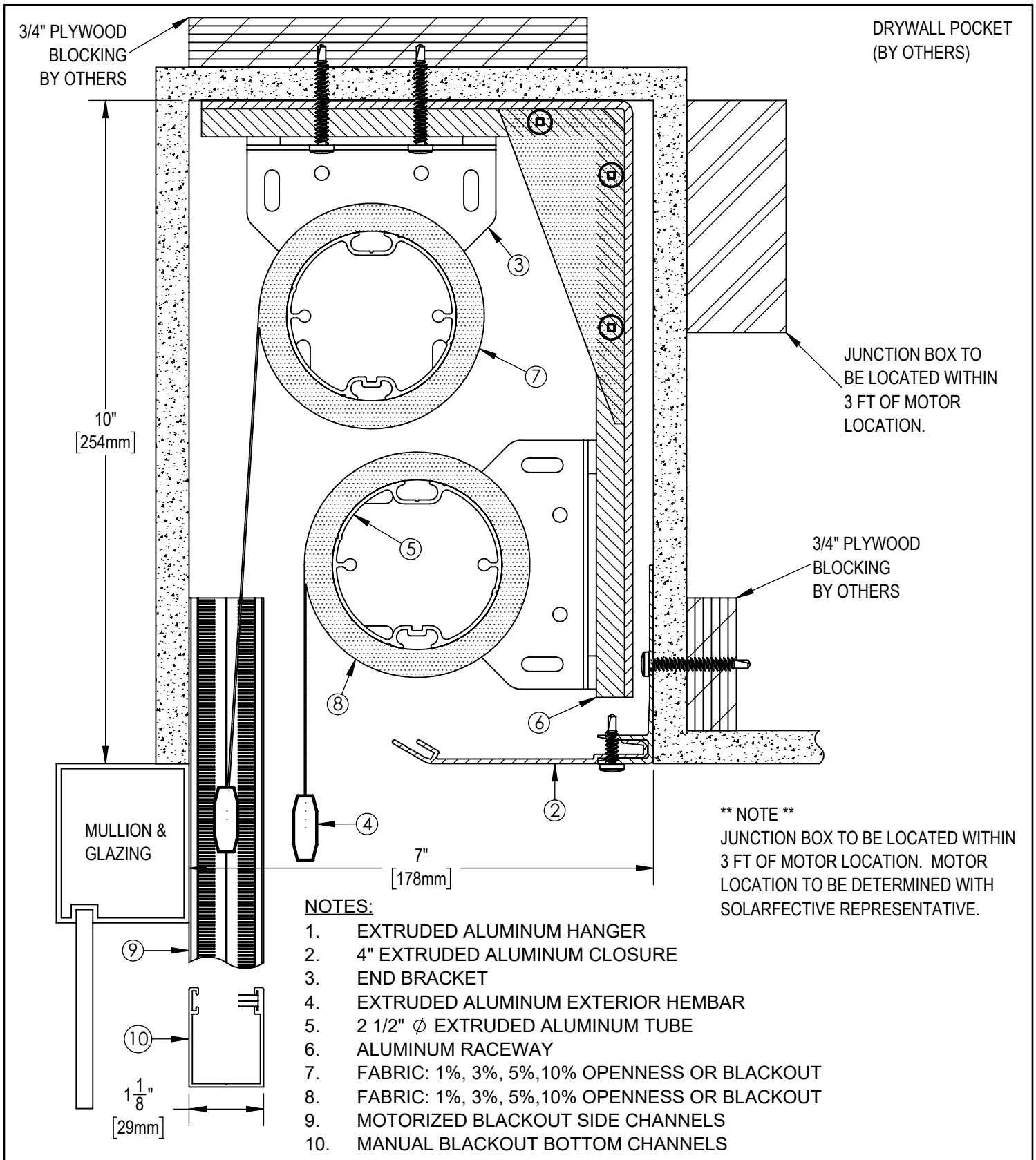
1:2

DOCUMENT NUMBER:

SF-RD8

REVISION:

-



**SOLARFECTIVE**

Legrand Customer Service Information  
Phone: 833-456-4291  
Email: shading.cs@legrand.us

## ES SHADE 5 DUAL SYSTEM IN POCKET SIDE AND BOTTOM CHANNELS

DATE:

APR 1, 2019

SCALE:

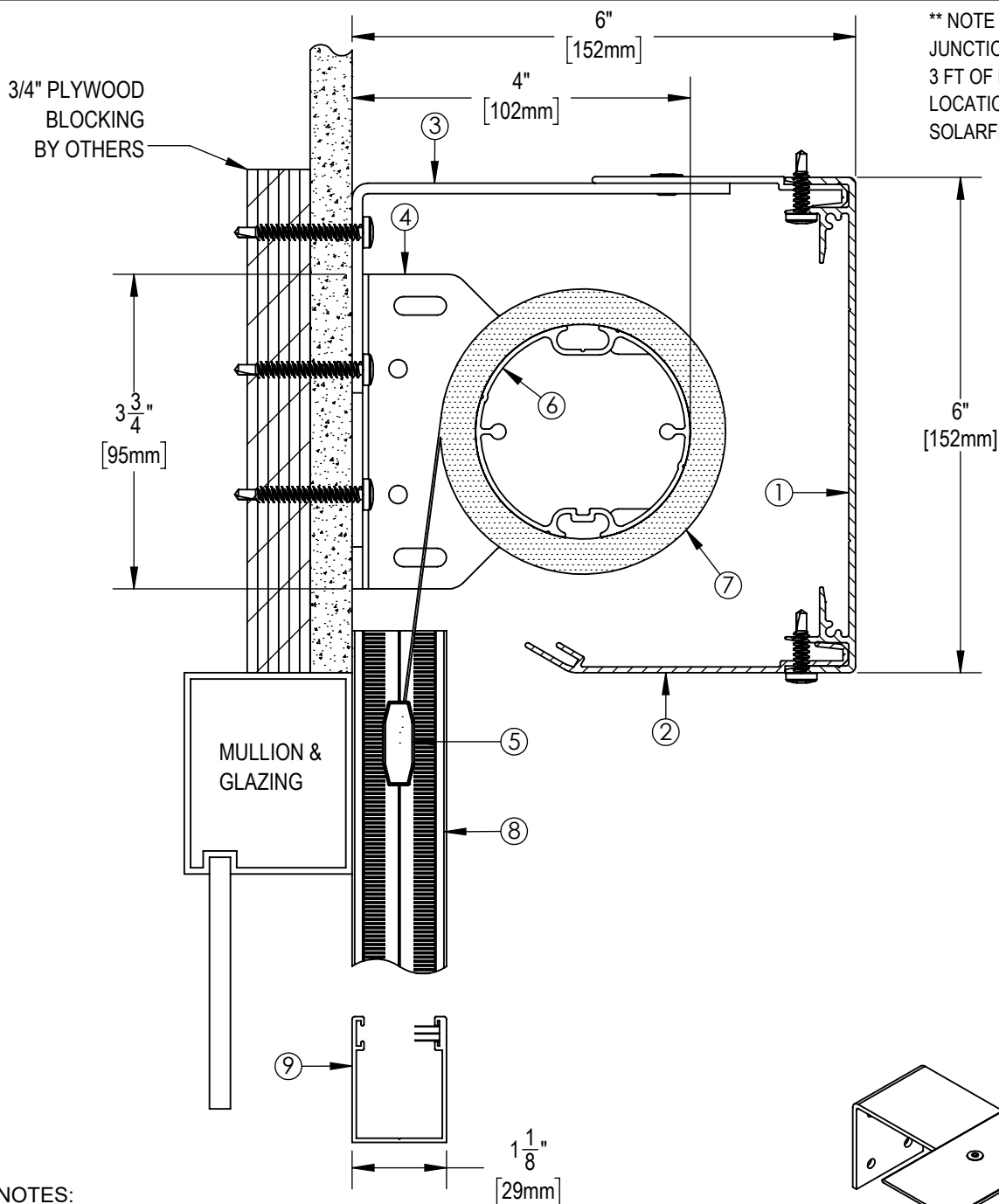
1:2

DOCUMENT NUMBER:

SF-RD9

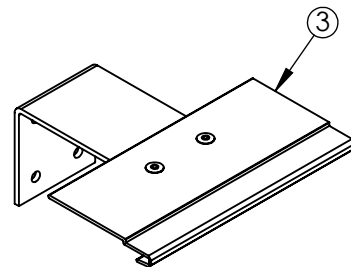
REVISION:

-



**NOTES:**

1. EXTRUDED ALUMINUM 6" FASCIA
2. 4" EXTRUDED ALUMINUM CLOSURE
3. MOUNTING ANGLE
4. END BRACKET
5. EXTRUDED ALUMINUM EXTERIOR HEMBAR
6. 2 1/2" OR 3 1/2"  $\phi$  EXTRUDED ALUMINUM TUBE
7. FABRIC: 1%, 3%, 5%, 10% OPENNESS OR BLACKOUT
8. MOTORIZED BLACKOUT SIDE CHANNELS
9. MANUAL BLACKOUT BOTTOM CHANNEL



ISO VIEW OF MOUNTING ANGLE  
ONE AT EACH END.



**SOLARFECTIVE**

Legrand Customer Service Information  
Phone: 833-456-4291  
Email: shading.cs@legrand.us

**ES SHADE 6 WITH FACE MOUNT  
FASCIA SIDE AND BOTTOM CHANNELS**

DATE:

APR 1, 2019

SCALE:

1:2

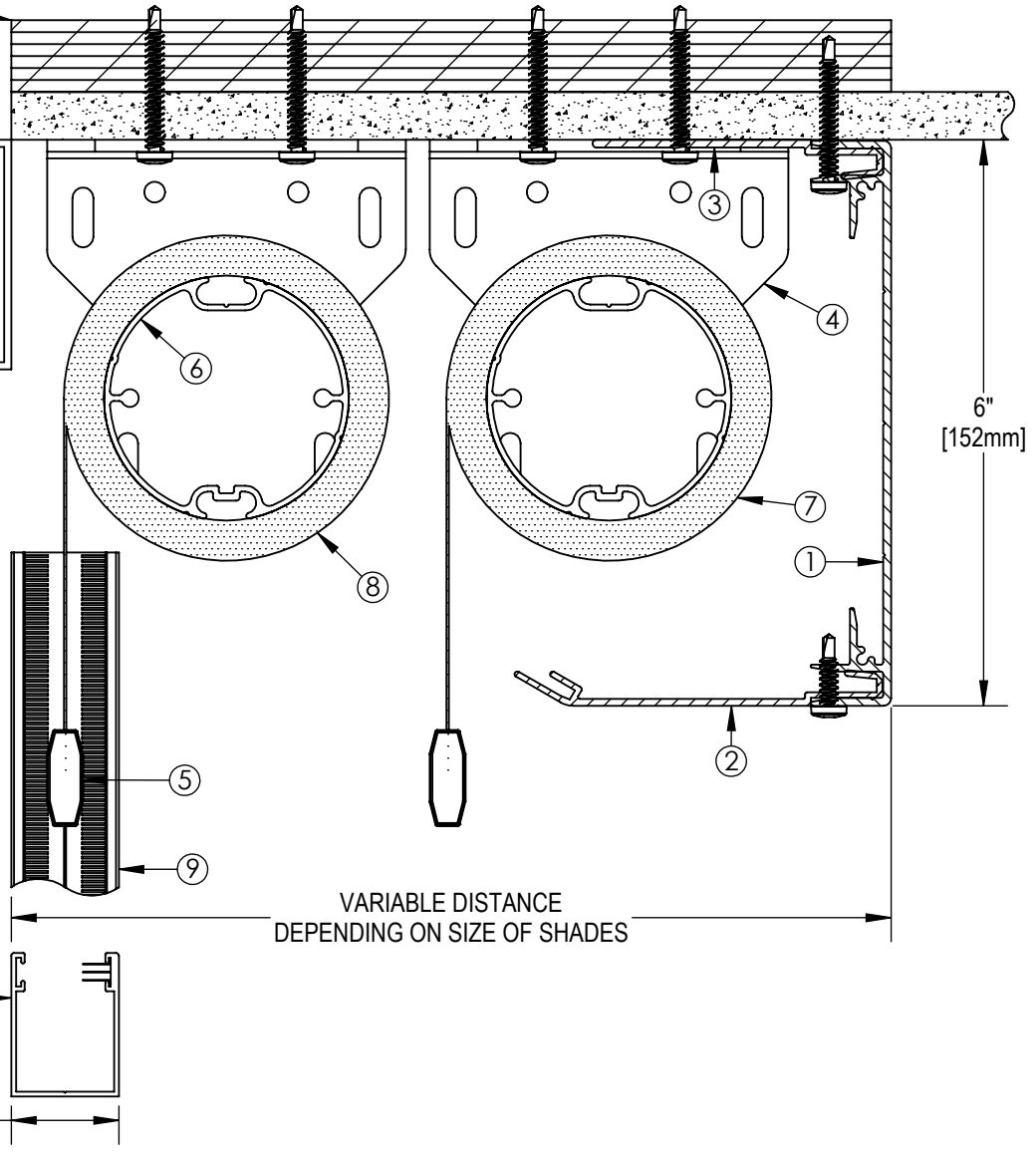
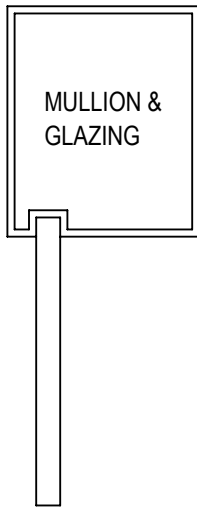
DOCUMENT NUMBER:

SF-RD10

REVISION:

-

3/4" PLYWOOD  
BLOCKING  
BY OTHERS



**NOTES:**

1. EXTRUDED ALUMINUM 6" FASCIA
2. 4" EXTRUDED ALUMINUM CLOSURE
3. MOUNTING ANGLE
4. END BRACKET
5. EXTRUDED ALUMINUM EXTERIOR HEMBAR
6. 2 1/2" OR 3 1/2" Ø EXTRUDED ALUMINUM TUBE
7. FABRIC: 1%, 3%, 5%, 10% OPENNESS OR BLACKOUT
8. FABRIC: 1%, 3%, 5%, 10% OPENNESS OR BLACKOUT
9. MOTORIZED BLACKOUT SIDE CHANNEL
10. MANUAL BLACKOUT BOTTOM CHANNEL

**\*\* NOTE \*\***

JUNCTION BOX TO BE LOCATED WITHIN  
3 FT OF MOTOR LOCATION. MOTOR  
LOCATION TO BE DETERMINED WITH  
SOLARFECTIVE REPRESENTATIVE.



**SOLARFECTIVE**

Legrand Customer Service Information  
Phone: 833-456-4291  
Email: shading.cs@legrand.us

**ES SHADE 6 DUAL SYSTEM WITH HORIZONTAL  
CEILING MOUNT FASCIA SIDE AND BOTTOM  
CHANNELS**

DATE:

APR 1, 2019

SCALE:

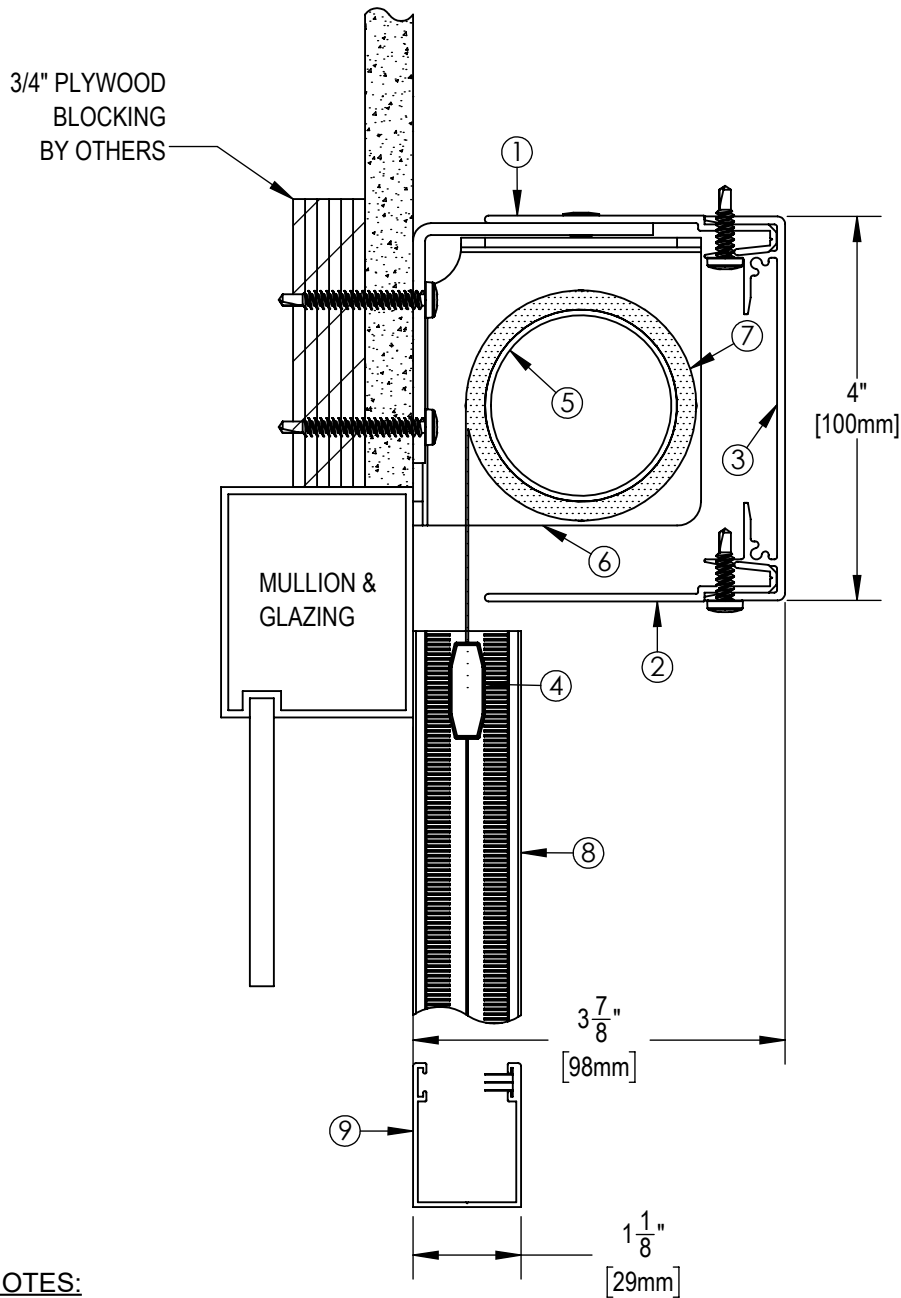
1:2

DOCUMENT NUMBER:

SF-RD15

REVISION:

-

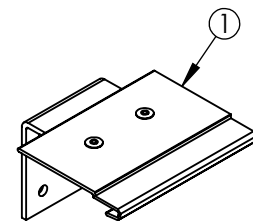


**\*\* NOTE \*\***

JUNCTION BOX TO BE LOCATED WITHIN  
3 FT OF MOTOR LOCATION. MOTOR  
LOCATION TO BE DETERMINED WITH  
SOLARFECTIVE REPRESENTATIVE.

**NOTES:**

1. MOUNTING ANGLE
2. 2-5/8" EXTRUDED ALUMINUM CLOSURE
3. EXTRUDED ALUMINUM 4" FASCIA
4. EXTRUDED ALUMINUM EXTERIOR HEMBAR
5. 2"  $\varnothing$  EXTRUDED ALUMINUM TUBE
6. END BRACKET
7. FABRIC: 1%, 3%, 5%, 10% OPENNESS OR BLACKOUT
8. MOTORIZED BLACKOUT SIDE CHANNEL
9. MANUAL BLACKOUT BOTTOM CHANNEL



ISO VIEW OF MOUNTING ANGLE  
ONE AT EACH END.



**SOLARFECTIVE**

Legrand Customer Service Information  
Phone: 833-456-4291  
Email: shading.cs@legrand.us

**ES SHADE 4 WITH FACE MOUNT  
FASCIA SIDE AND BOTTOM CHANNELS**

DATE:

APR 1, 2019

SCALE:

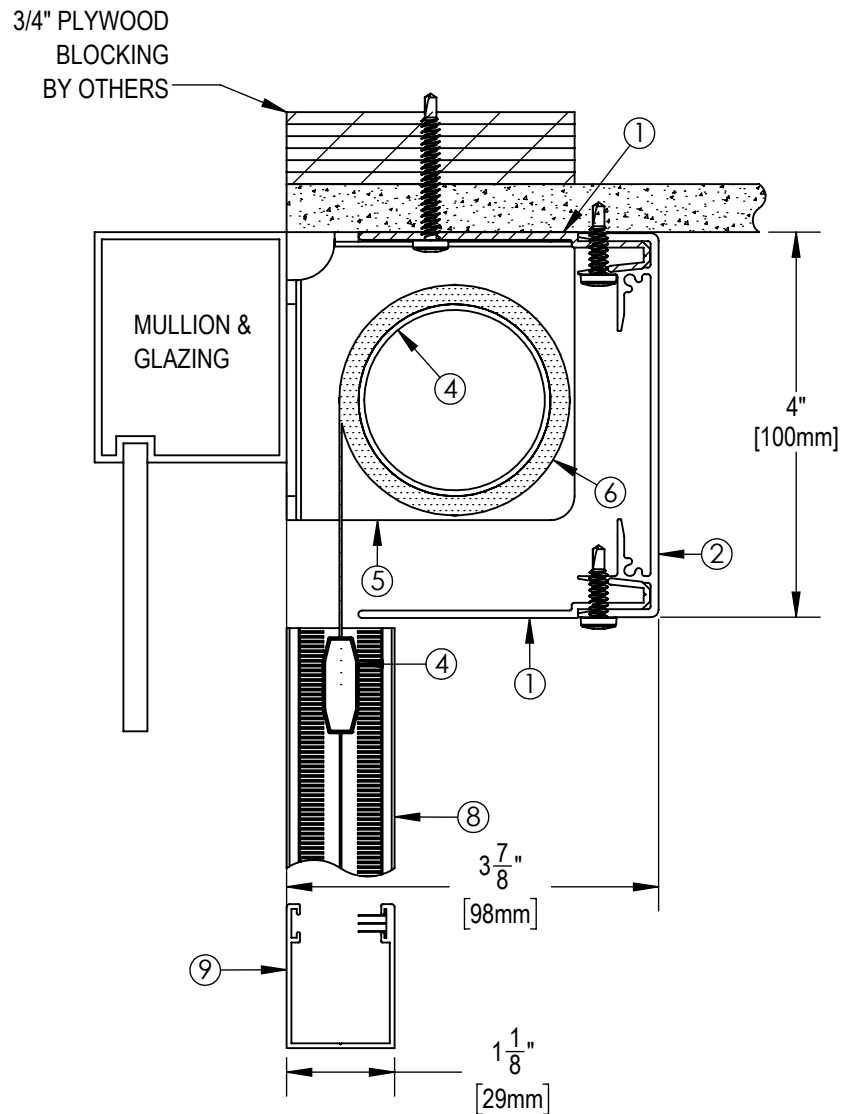
1:2

DOCUMENT NUMBER:

SF-RD16

REVISION:

-



#### NOTES:

1. 2-5/8" EXTRUDED ALUMINUM CLOSURE
2. EXTRUDED ALUMINUM 4" FASCIA
3. EXTRUDED ALUMINUM EXTERIOR HEMBAR
4. 2"  $\varnothing$  EXTRUDED ALUMINUM TUBE
5. END BRACKETS
6. FABRIC: 1%, 3%, 5%, 10% OPENNESS OR BLACKOUT
7. MOTORIZED BLACKOUT SIDE CHANNEL
8. MANUAL BLACKOUT BOTTOM CHANNEL

#### \*\* NOTE \*\*

JUNCTION BOX TO BE LOCATED WITHIN 3 FT OF MOTOR LOCATION. MOTOR LOCATION TO BE DETERMINED WITH SOLARFECTIVE REPRESENTATIVE.



#### SOLARFECTIVE

Legrand Customer Service Information  
Phone: 833-456-4291  
Email: shading.cs@legrand.us

#### ES SHADE 4 WITH CEILING MOUNT FASCIA SIDE AND BOTTOM CHANNELS

DATE:

APR 1, 2019

SCALE:

1:2

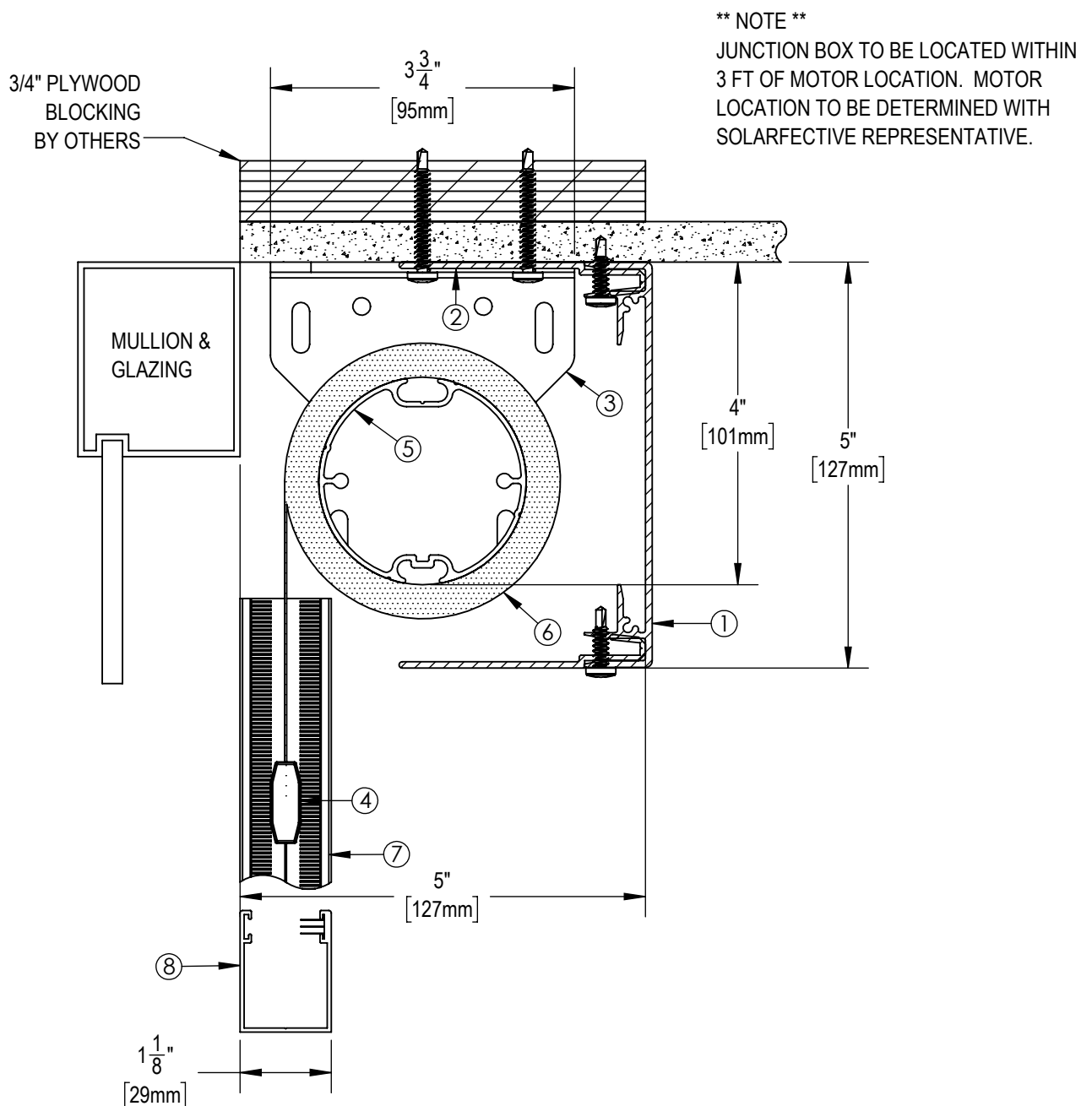
DOCUMENT NUMBER:

SF-RD17

REVISION:

-





**NOTES:**

1. EXTRUDED ALUMINUM 5" FASCIA
2. MOUNTING ANGLE
3. END BRACKET
4. EXTRUDED ALUMINUM EXTERIOR HEMBAR
5. 2 1/2" OR 3 1/2" Ø EXTRUDED ALUMINUM TUBE
6. FABRIC: 1%, 3%, 5%, 10% OPENNESS OR BLACKOUT
7. MOTORIZED BLACKOUT SIDE CHANNEL
8. MANUAL BLACKOUT BOTTOM CHANNEL

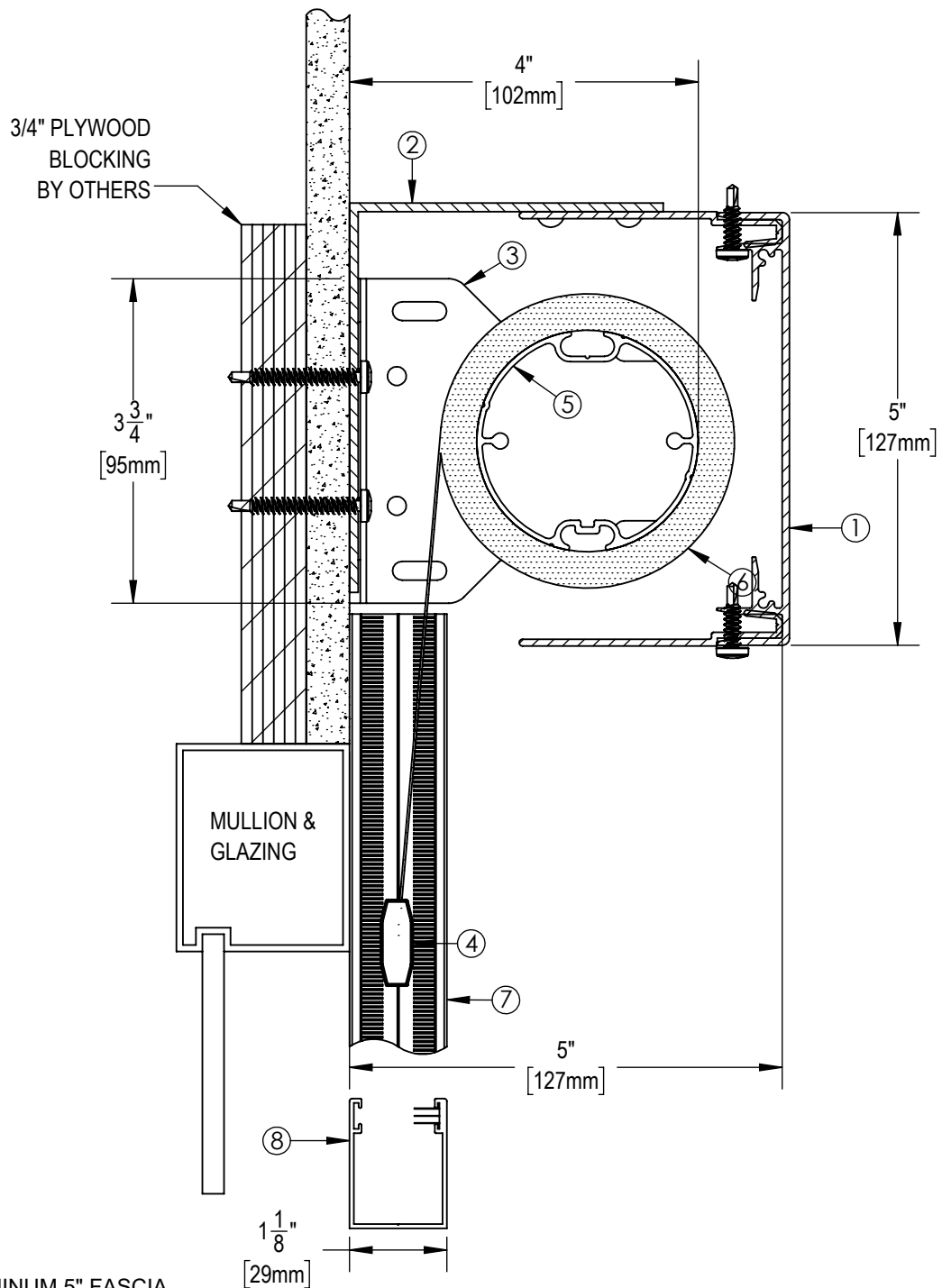


**SOLARFECTIVE**

Legrand Customer Service Information  
Phone: 833-456-4291  
Email: shading.cs@legrand.us

**ES SHADE 5 WITH CEILING MOUNT  
FASCIA SIDE AND BOTTOM CHANNELS**

DATE:	SCALE:	DOCUMENT NUMBER:	REVISION:
APR 1, 2019	1:2	SF-RD18	-



**NOTES:**

1. EXTRUDED ALUMINUM 5" FASCIA
2. MOUNTING ANGLE
3. END BRACKET
4. EXTRUDED ALUMINUM EXTERIOR HEMBAR
5. 2 1/2" Ø EXTRUDED ALUMINUM TUBE
6. FABRIC: 1%, 3%, 5%, 10% OPENNESS OR BLACKOUT
7. MOTORIZED BLACKOUT SIDE CHANNEL
8. MANUAL BLACKOUT BOTTOM CHANNEL

**\*\* NOTE \*\***

JUNCTION BOX TO BE LOCATED WITHIN 3 FT OF MOTOR LOCATION. MOTOR LOCATION TO BE DETERMINED WITH SOLARFECTIVE REPRESENTATIVE.



**SOLARFECTIVE**

Legrand Customer Service Information  
Phone: 833-456-4291  
Email: shading.cs@legrand.us

**ES SHADE 5 WITH FACE MOUNT  
FASCIA SIDE AND BOTTOM CHANNELS**

DATE:

APR 1, 2019

SCALE:

1:2

DOCUMENT NUMBER:

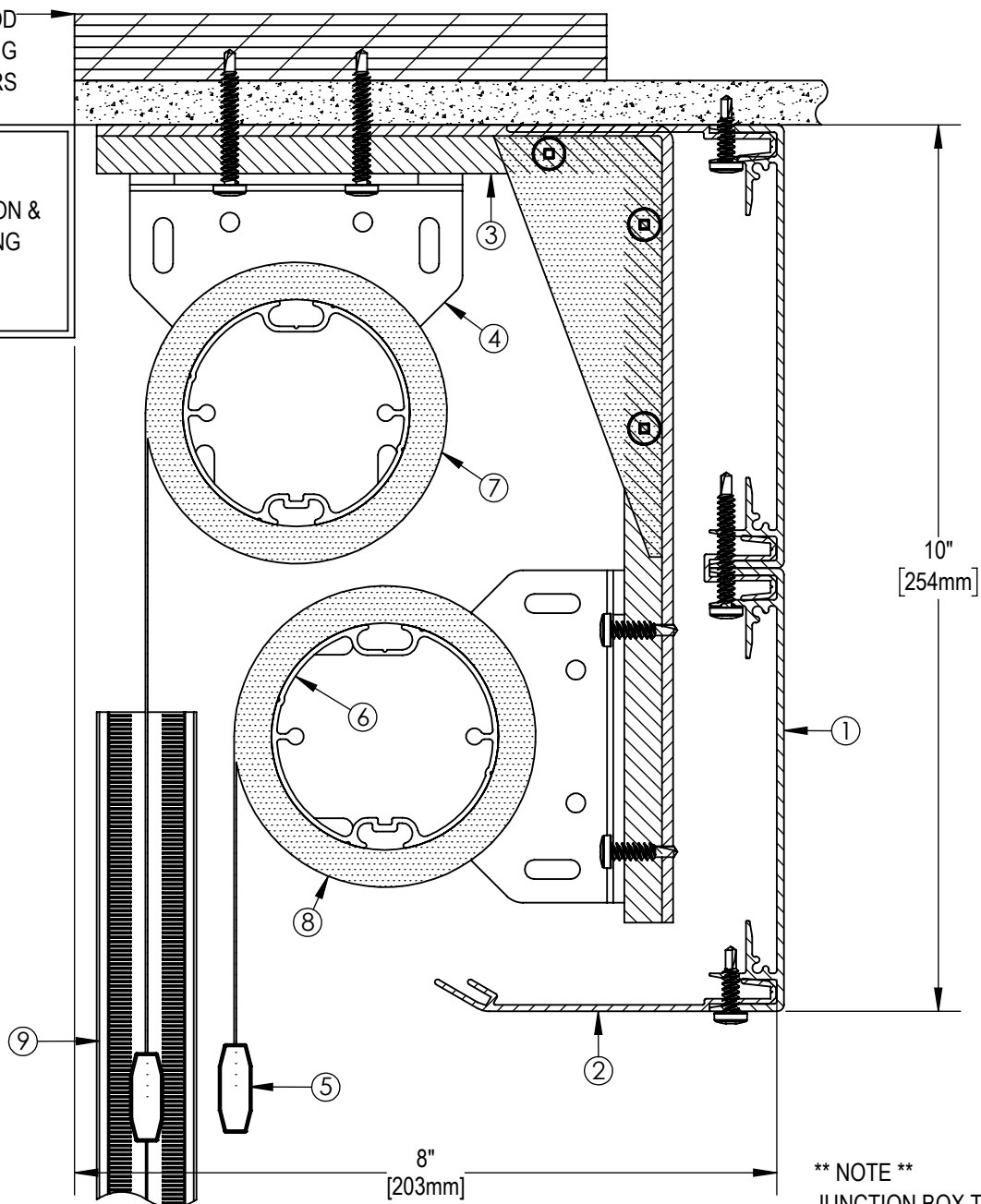
SF-RD19

REVISION:

-

3/4" PLYWOOD  
BLOCKING  
BY OTHERS

MULLION &  
GLAZING



**NOTES:**

1. EXTRUDED ALUMINUM 10" FASCIA
2. 4" EXTRUDED ALUMINUM CLOSURE
3. ALUMINUM RACEWAY
4. END BRACKET
5. EXTRUDED ALUMINUM EXTERIOR HEMBAR
6. 2 1/2" Ø EXTRUDED ALUMINUM TUBE
7. FABRIC: 1%, 3%, 5%, 10% OPENNESS OR BLACKOUT
8. FABRIC: 1%, 3%, 5%, 10% OPENNESS OR BLACKOUT
9. MOTORIZED BLACKOUT SIDE CHANNEL
10. MANUAL BLACKOUT BOTTOM CHANNEL

**\*\* NOTE \*\***

JUNCTION BOX TO BE LOCATED WITHIN 3 FT OF MOTOR LOCATION. MOTOR LOCATION TO BE DETERMINED WITH SOLARFECTIVE REPRESENTATIVE.



**SOLARFECTIVE**

Legrand Customer Service Information  
Phone: 833-456-4291  
Email: shading.cs@legrand.us

**ES SHADE 5 DUAL SYSTEM WITH FASCIA, RACEWAY,  
SIDE AND BOTTOM CHANNELS**

DATE:

APR 1, 2019

SCALE:

1:2

DOCUMENT NUMBER:

SF-RD22

REVISION:

-