

**Fire can burn through most  
wall penetrations in minutes.**

**WIREMOLD**

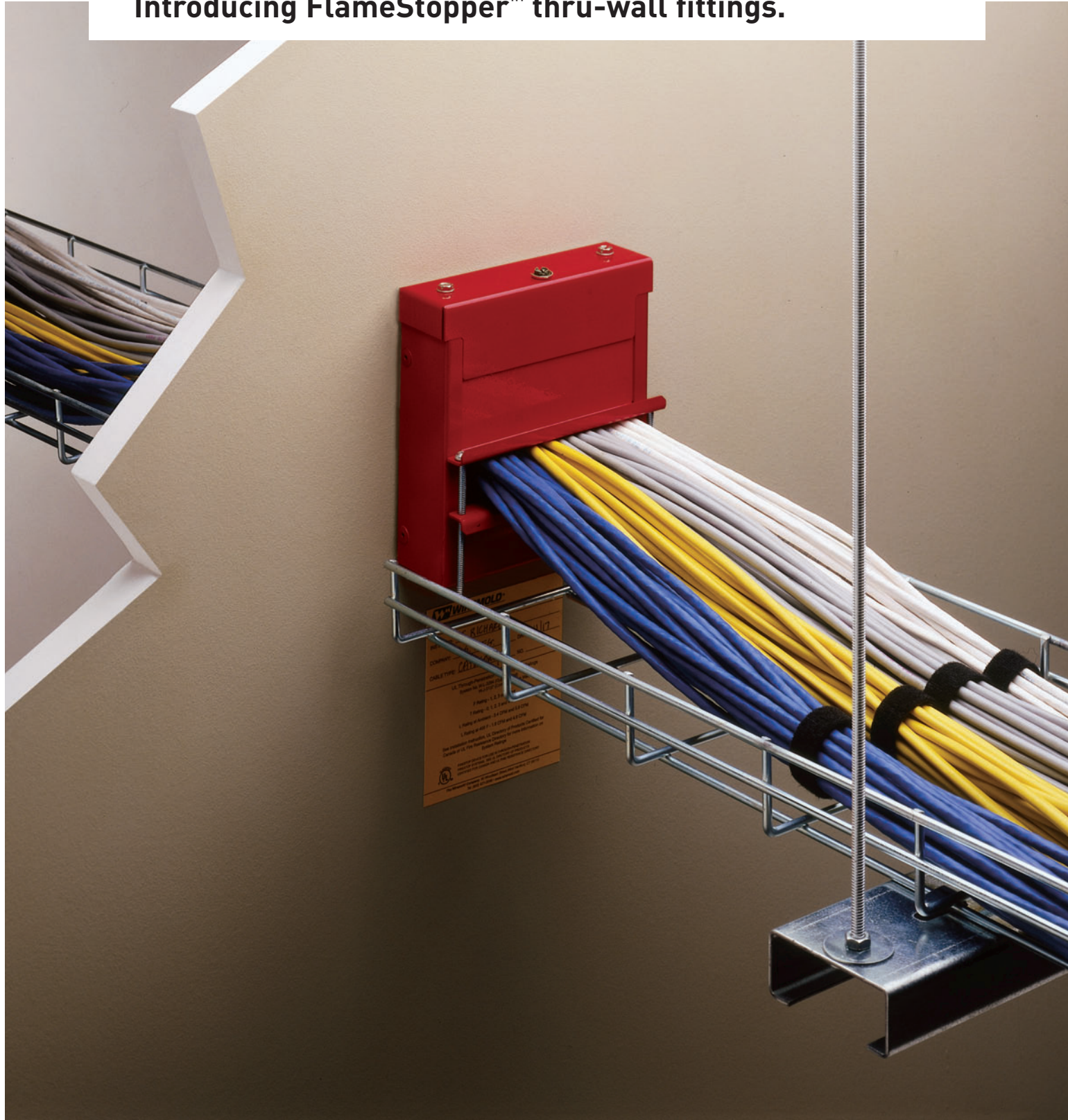




**But not this one.**



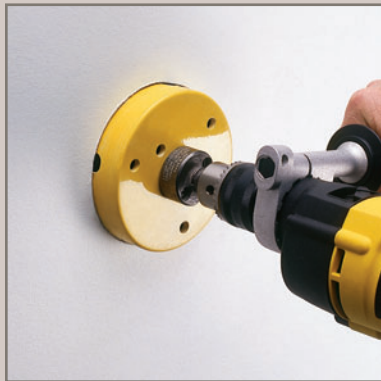
Introducing FlameStopper™ thru-wall fittings.



Need to protect the integrity of a firewall, without adding caulk or putty after cables are installed? You need FlameStopper thru-wall fittings. Now redesigned for both new installations and retrofits, FlameStopper fittings combine a built-in fire-stopping intumescent material with an enclosed thru-wall penetration. They meet UL tests for flame, temperature, and smoke, as well as for use in air handling spaces (plenums). Once installed, FlameStopper fittings let you add or remove cables easily, without risking the unseen and potentially dangerous gaps or voids that can occur with caulks or putty. FlameStopper thru-wall fittings are easy to install and inspect. Best of all, they're the proven way to stop fire in its tracks.



FlameStopper thru-wall fittings consist of two box assemblies, each with adjustable steel doors. The boxes are attached to EMT conduit, and cables pass through a block of intumescent material inside each assembly. If the temperature reaches approximately 375°F, the material expands, creating a hard char that fills voids around the cables and stops flame from penetrating the opening. When tested to UL 1479 standards, FlameStopper achieved F (flame) and T (temperature) ratings of up to 4 hours. It also earned a low rating for air leakage, making it a highly effective smoke stop.



1.) Determine the location for the fitting on the wall and cut a hole using a hole saw, keyhole saw, or core drill.



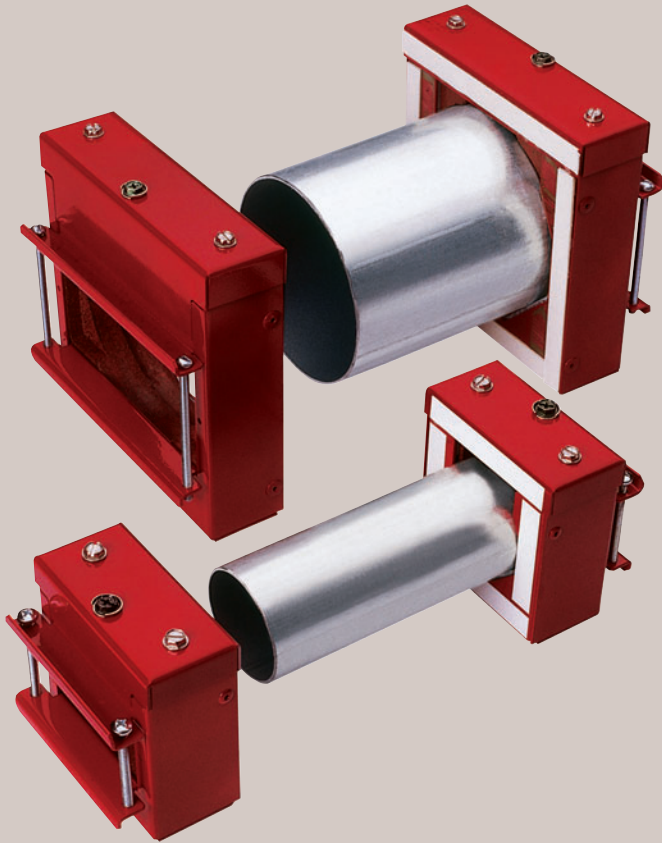
2.) Insert the appropriate length of conduit into the opening with one box already installed. Use the adhesive tape of the fitting to secure safely to the wall.  
NOTE: Consider using a level to ensure that the box is square.



3.) Place the FlameStopper thru-wall fitting box over the opening and secure the two bolts.

A FIRESTOP SOLUTION DESIGNED FOR ALL STYLES OF CABLE TRAY.

FlameStopper thru-wall fittings are available with 2" and 4" EMT conduit, and can be ganged for high-capacity applications. They work perfectly with Wiremold® FieldMate™ and SpecMate™ cable tray systems for a seamless solution.



NOW, SUPERIOR PROTECTION FOR EXISTING INSTALLATIONS.

FlameStopper thru-wall fittings can now be used in a variety of situations where cables or conduit already run through a wall. An adjustable Heat Shield is designed for use where existing conduit extends from 1" to 6" from the wall. The Retrofit Kit combines a split conduit sleeve, to enclose existing cables, as well as a ceramic heat shield to cover irregular hole-cuts. Once the FlameStopper thru-wall fittings have been installed, no additional fire-stop material is needed.



HEAT SHIELD



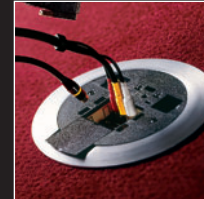
RETROFIT KIT



Flamestopper thru-wall fittings are part of our complete end-to-end wire and cable management solutions.



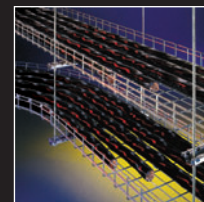
Perimeter



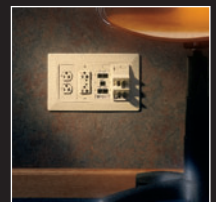
Infloor



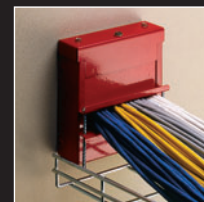
Open Space



Overhead



In-Wall



Firestopping



Power & Data Quality

[www.wiremold.com](http://www.wiremold.com)

**Wiremold/Legrand**  
60 Woodlawn Street  
West Hartford, CT 06110  
Telephone: 1-800-621-0049  
Fax: 1-860-232-2062

**In Canada**  
570 Applewood Crescent  
Vaughan, Ontario L4K 4B4  
Telephone: 1-800-723-5175  
Fax: 1-905-760-1733

# WIREMOLD

