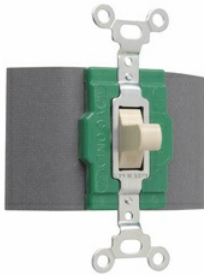


Double Pole, Double Throw Manual Control Switch, 30 amps, 120/277 volts, Brown.



## Features & Benefits

Oversize silver alloy contacts for long life and better heat dissipation.

Fiber terminal insulation barriers standard.

Bodies, covers, and toggles molded of durable nylon.

Locking Switches supplied with one 1498-NT key.

For covering patents, see [www.legrand.us/patents](http://www.legrand.us/patents).

Side wired terminals accept #14 - #10 AWG copper or copper-clad conductors.

Can be mounted in standard device boxes or in NEMA 1 sheet steel enclosures.

Single Pole-Double Throw and Double Pole-Double Throw.

Normally open.

For compatible wall plate options, from our TradeMaster unbreakable plates to our radiant screwless plates to our metal wall plates, [click here](#).

## Specifications

### General Info

Color White

UPC Number 785007239195

Country Of Origin Mexico

Product Line Pass & Seymour

Standard UL Listed

### Listing Agencies / 3rd Party Agencies

CSA Listed Yes

### Technical Information

Voltage 120 V

Actuator Toggle