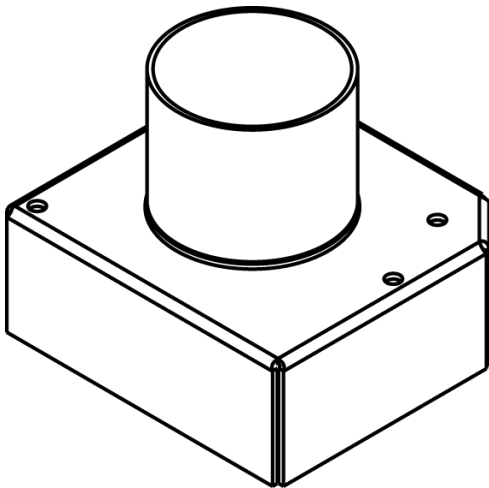




Wiremold
Evolution 6AT Series Bottom Housing Assembly
Part No. 152CHA



One and a half-gang 2" trade size conduit housing assembly. Recommended for use with furniture feed devices (6ATCFF). Covers the center compartment and one of the side compartments.

Features & Benefits

One and a half-gang 2" trade size conduit housing assembly. Recommended for use with furniture feed devices (6ATCFF). Covers the center compartment and one of the side compartments.

Specifications

General Info

Product Line	Wiremold	UPC Number	786564066620
Country Of Origin	United States	Construction	Not Assembled
Application Sector	Commercial, Education, Healthcare, Hospitality	Standard	cULus Listed, NEC
Warranty Type	1-Year from Installation or 2-Years from Day of Sale	Type	Accessory

Dimensions

Product Width US	3.76 in	Product Weight US	1.0 lb
Product Height US	3.23 in	Product Length US	4.08 in

Listing Agencies / 3rd Party Agencies

cULus ListingNumber	E2961	cULus Listed	Yes
---------------------	-------	--------------	-----

Additional Information

RoHS Compliant	Yes
----------------	-----
