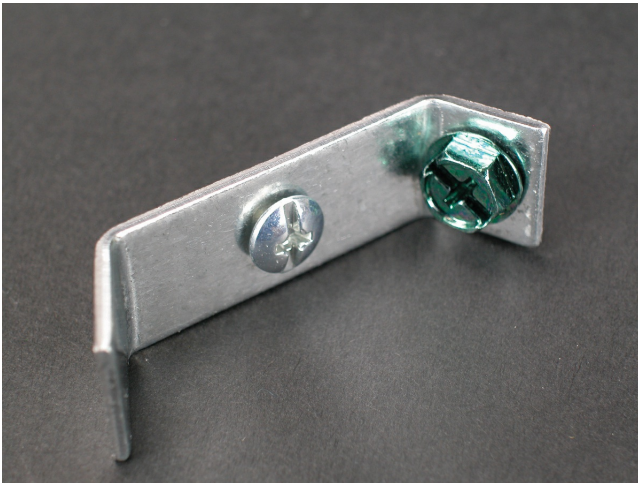




Wiremold
2400 Ground Clamp Fitting
Part No. 2409



Connects equipment grounding conductor to provide ground to 2400 Series Raceway. No. 10 ground screw provided.

Features & Benefits

Connects equipment grounding conductor to provide ground to 2400 Series Raceway. No. 10 ground screw provided.

Specifications

General Info

Product Line	Wiremold	UPC Number	786776516043
Country Of Origin	United States	Standard	cULus Listed Raceway: File E4376 Guide RJBT. Fittings: File E41751 Guide RJPR. Base & Blank Cover: Meets Article 386 of NEC. Meets Section 12-600 of CEC.
Type	Raceway		

Dimensions

Product Width US	0.5 in
------------------	--------

Listing Agencies / 3rd Party Agencies

cULus ListingNumber	E41751	cULus Listed	Yes
---------------------	--------	--------------	-----

Buy American Act Compliance

NAFTA

Yes

Additional Information

RoHS Conformant

Yes

Product Environmental Profile Yes

Technical Information

Voltage

600.0 V
