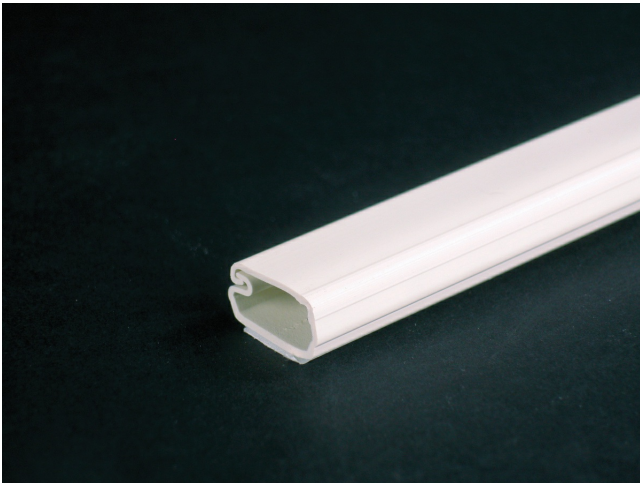




Wiremold
Uniduct 2700 Series One-Piece Latching Raceway Fitting
Part No. 2700L8-WH



2700 Series Co-extruded design, smooth plastic finish with adhesive backing. Available in 8' (2.44m) lengths, packed 160' (48.8m) per carton.

Features & Benefits

2700 Series Co-extruded design, smooth plastic finish with adhesive backing. Available in 8' (2.44m) lengths, packed 160' (48.8m) per carton.

Specifications

General Info

Product Line	Wiremold	UPC Number	786776521689
Country Of Origin	United States	Application Sector	Residential/Commercial
Standard	Uniduct Series Raceway is not UL Listed and is only designed for use in protecting electrical cords and low voltage wiring and cabling.	Type	Raceway

Dimensions

Product Height US	0.375 in	Product Length US	0.75 in
-------------------	----------	-------------------	---------

Buy American Act Compliance

NAFTA	Yes
-------	-----

Additional Information

RoHS Conformant	Yes	Product Environmental Profile	Yes
-----------------	-----	-------------------------------	-----