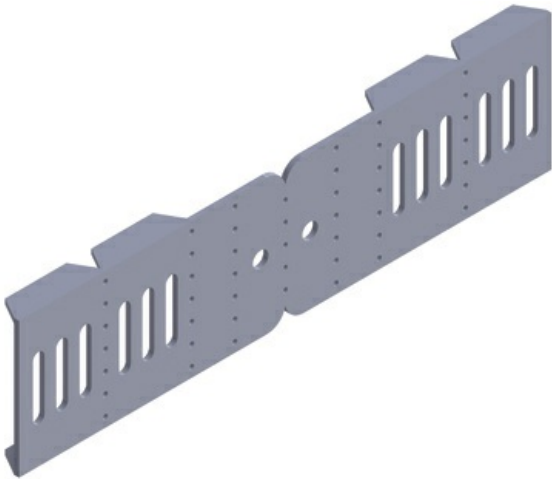




Cablofil  
**TROUGH Universal Splice -PREGALV 2H**  
Part No. 341224



V-Trough cable tray keeps your cables protected and easy to manage. Its high-strength steel construction matches many European OEM specifications and is available in smaller sizes for control and instrumentation cabling. V-Trough is manufactured to exacting standards so that all components fit together perfectly, making installation a snap.

## Features & Benefits

One splice performs many functions.

Fabricates tees, reductions and level changes on-site.

Field bend to create one-sided reduction/expansion of 2", 4", 6", or 8".

Field snap apart to make vertical adjustment splice plate.

1/4" hardware included for adjustable splice plate.

## Specifications

### General Info

Product Line	Cablofil	Finish	Pre-Galvanized
Country Of Origin	Italy		

### Dimensions

Product Weight US	0.337 lb
-------------------	----------