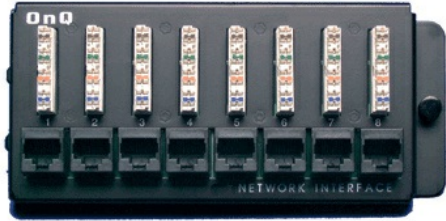


Cat 5e rated module supports termination of up to eight On-Q Cat 5e cables for interconnection to a local area network or digital data services. Provides a termination point for telephone cable runs when using the 1x8 Enhanced Telecom Module and the 8-



Features & Benefits

High-speed Cat 5e termination point for digital data services

RJ45 jumpers sold separately

Provides connectivity for computers for a local area network (LAN)

RJ45 8-pin modular jacks provide for time-saving termination and hassle-free connection changes

High-quality Cat 5e termination using 110-style punchdown to RJ45 modular jacks

Specifications

General Info

| | | | |
|--------------------|--------------|-------------------------|----------|
| Product Line | On-Q | Replaced by Part Number | AC1058 |
| UPC Number | 804428000655 | Country Of Origin | China |
| Application Sector | Residential | Standard | UL, RoHS |

Technical Information

| | | | |
|------------------|------------------------|-----------------|---|
| Connector | RJ45 Cat 5e to 110 IDC | Number of Ports | 8 |
| Single/Multimode | Non-applicable | | |