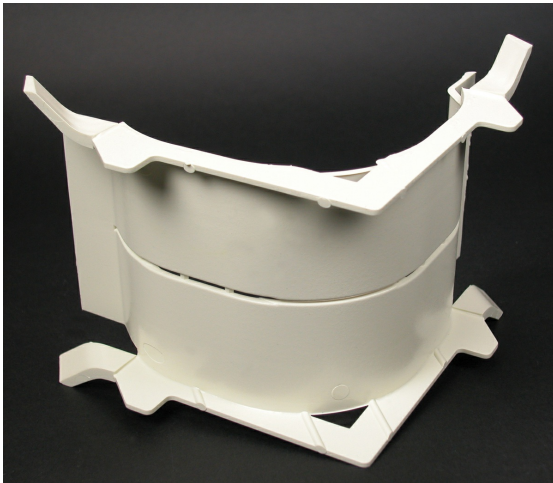




Wiremold
4000 Radiused Insert for Internal/External Elbow Fitting
Part No. 4017/18RI



Radiused insert for 4017 Internal Elbow and 4018 External Elbow in divided or undivided applications. Provides 2" (51mm) cable bend radius control for UTP, STP and fiber optic cable installations. Ideal for new and retrofit applications whether the cable installation is lay-in or pull-through.

Features & Benefits

Radiused insert for 4017 Internal Elbow and 4018 External Elbow in divided or undivided applications. Provides 2" (51mm) cable bend radius control for UTP, STP and fiber optic cable installations. Ideal for new and retrofit applications whether the cable installation is lay-in or pull-through.

Specifications

General Info

Product Line	Wiremold	UPC Number	786776534078
Country Of Origin	United States	Application Sector	Residential/Commercial
Standard	cULus Listed Raceway: File E4376 Guide RJBT. Fittings: File E41751 Guide RJPR. Base & Blank Cover: Meets Article 386 of NEC. Meets Section 12-600 of CEC.	Type	Raceway

Dimensions

Product Width US	6.0 in	Product Height US	4.75 in
Product Length US	6.0 in		

Buy American Act Compliance

NAFTA	Yes
-------	-----

Additional Information

RoHS Conformant Yes

Product Environmental Profile Yes

Technical Information

Voltage 600.0 V
