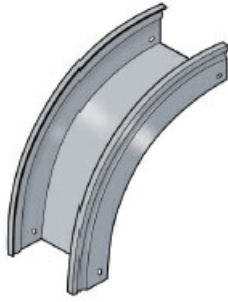




Cablofil
FTVO90100/300PG - FbrTrough Vert Out
Part No. 481057



Cablofil Fiber Trough utilizes high strength steel components to provide the strength and durability required to manage fiber cabling requirements in the most demanding data center environments.

Features & Benefits

Built in offset for connecting without separate splice plates.

Strong corrosion resistant steel construction.

Specifications

General Info

| | | | |
|--------------|--------------|-------------------|----------------|
| Product Line | Cablofil | Finish | Pre-Galvanized |
| UPC Number | 800388241275 | Country Of Origin | Italy |

Dimensions

| | | | |
|-------------------|-------------|-------------------|----------|
| Product Width US | 11.8 in | Product Weight US | 2.412 lb |
| Product Volume US | 0.967 cu ft | Product Depth US | 11.9 in |
| Product Height US | 11.9 in | | |