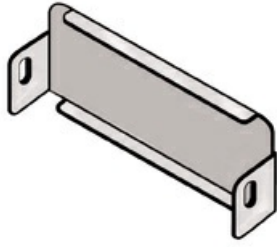




Cablofil  
**P31-END CAP 50X200 PG**  
Part No. 481540



Cablofil Fiber Trough utilizes high strength steel components to provide the strength and durability required to manage fiber cabling requirements in the most demanding data center environments.

## Features & Benefits

---

Seals end of tray.

Strong corrosion resistant steel construction.

## Specifications

---

### General Info

---

Product Line	Cablofil	Finish	Pre-Galvanized
UPC Number	800388241589	Country Of Origin	Italy

---

### Dimensions

---

Product Weight US	0.373 lb
-------------------	----------

---