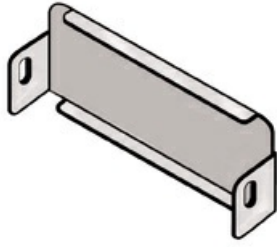




Cablofil  
FTBE100/300PG - FiberTrough Blind End  
Part No. 481662



Cablofil Fiber Trough utilizes high strength steel components to provide the strength and durability required to manage fiber cabling requirements in the most demanding data center environments.

## Features & Benefits

Seals end of tray.

Strong corrosion resistant steel construction.

## Specifications

### General Info

Product Line	Cablofil	Finish	Pre-Galvanized
UPC Number	800388241763	Country Of Origin	Italy

### Dimensions

Product Weight US	0.664 lb
-------------------	----------