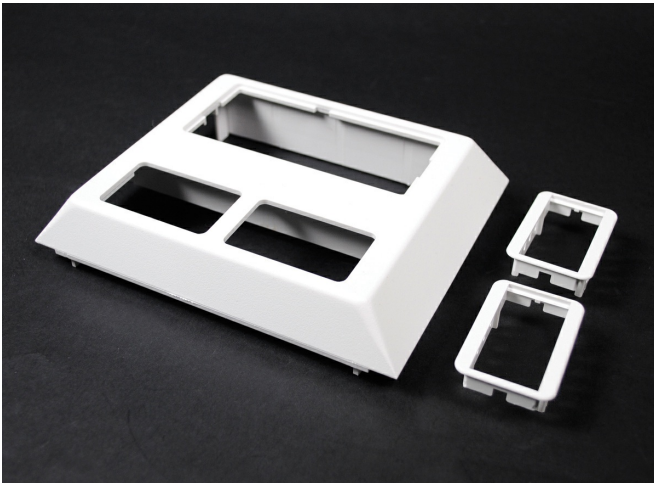




**Wiremold**  
**Access 5000 Deep Device Plate Fitting**  
Part No. 5007C-2ABWH



For mounting deeper devices such as TVSS receptacles, GFCI devices, and Pass and Seymour Activate inserts. Accepts 5507 Series Faceplates, 2A size Activate inserts, and Open System communication modules. Bezels included. For faceplate options, see 5507 Series Faceplates.

## Features & Benefits

For mounting deeper devices such as TVSS receptacles, GFCI devices, and Pass and Seymour Activate inserts. Accepts 5507 Series Faceplates, 2A size Activate inserts, and Open System communication modules. Bezels included. For faceplate options, see 5507 Series Faceplates.

## Specifications

### General Info

Product Line	Wiremold	UPC Number	786776056266
Country Of Origin	United States	Application Sector	Residential/Commercial
Standard	cULus Listed Raceway: File E90378 Guide RJTX. Complies with flammability requirements of UL-5A. Fittings: File E90377 Guide RJYT. Meets Article 388 of NEC. UL Listed for up to 600V. Meets Section 12-1600 of CEC.	Type	Raceway

### Dimensions

Product Depth US	0.937 in	Product Height US	5.187 in
Product Length US	6.75 in		

### Listing Agencies / 3rd Party Agencies

cULus ListingNumber	E90377	cULus Listed	Yes
---------------------	--------	--------------	-----

---

## Buy American Act Compliance

---

NAFTA	Yes
-------	-----

---

## Additional Information

---

RoHS Conformant	Yes	Product Environmental Profile	Yes
-----------------	-----	-------------------------------	-----

---

## Technical Information

---

Voltage	600.0 V
---------	---------

---