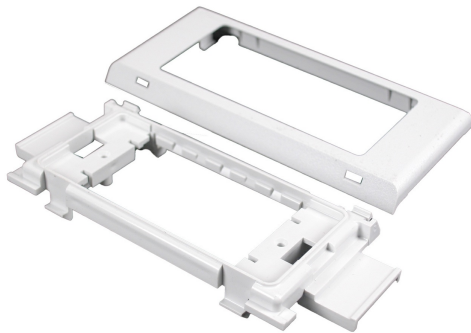




Wiremold
5400Twin Snap Device Bracket Fitting
Part No. 5450T



For power or communication devices in a single compartment. For use with 5507 Series Faceplates, Ortronics TracJack and Series II Modules, Pass and Seymour Activate Series Inserts, and Wiremold Open System Communication Modules. NOTE: CM-EPLA End Plates are required when using Wiremold communication modules and Pass and Seymour Activate inserts. S2-EPL End Plates are required when using Orthonics Series II Inserts. To mount TracJack inserts, use 5507-4TJ or 5507-6TJ Faceplates.

Features & Benefits

For power or communication devices in a single compartment.

NOTE: CM-EPLA End Plates are required when using Wiremold communication modules and Pass and Seymour Activate inserts.

For use with 5507 Series Faceplates, Ortronics TracJack and Series II Modules, Pass and Seymour Activate Series Inserts, and Wiremold Open System Communication Modules.

S2-EPL End Plates are required when using Orthonics Series II Inserts. To mount TracJack inserts, use 5507-4TJ or 5507-6TJ Faceplates.

Specifications

General Info

Product Line	Wiremold	UPC Number	786776059137
Country Of Origin	United States	Application Sector	Commercial, Residential
Standard	cULus Listed Raceway: File E90378 Guide RJTX. Complies with flammability requirements of UL-5A. Fittings: File E90377 Guide RJYT. Meets Article 388 of NEC. UL Listed for up to 600V. Meets Section 12-1600 of CEC.	Type	Raceway

Dimensions

Product Width US	2.5 in	Product Weight US	0.2 lb
Product Length US	4.875 in		

Listing Agencies / 3rd Party Agencies

cULus ListingNumber	E90377	cULus Listed	Yes
---------------------	--------	--------------	-----

Trade Programs

USMCA	Yes
-------	-----

Additional Information

RoHS Compliant	Yes	Product Environmental Profile	Yes
----------------	-----	-------------------------------	-----

Technical Information

Voltage	600.0 V
---------	---------