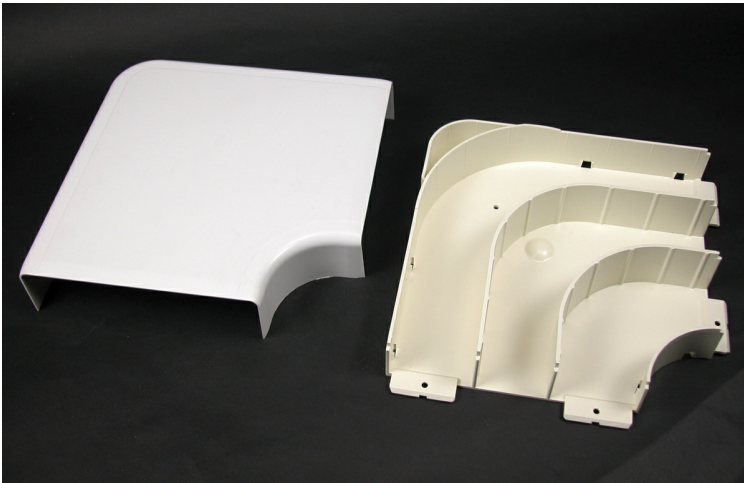




Wiremold
5500 Radiused Full Capacity Flat Elbow Fitting
Part No. 5511FO-WH



90 degree flat corner, with integral dividers, that provides a 2" (51mm) cable bend radius for UTP and fiber optic installations. Ideal for lay-in or pull-through installations.

Features & Benefits

90 degree flat corner, with integral dividers, that provides a 2" (51mm) cable bend radius for UTP and fiber optic installations. Ideal for lay-in or pull-through installations.

Specifications

General Info

Product Line	Wiremold	UPC Number	786776540994
Country Of Origin	United States	Application Sector	Commercial, Residential
Standard	cULus Listed Raceway: File E90378 Guide RJTX. Complies with flammability requirements of UL-5A. Fittings: File E90377 Guide RJYT. Meets Article 388 of NEC. UL Listed for up to 600V. Meets Section 12-1600 of CEC.	Type	Raceway

Dimensions

Product Weight US	1.75 lb	Product Height US	9.187 in
-------------------	---------	-------------------	----------

Listing Agencies / 3rd Party Agencies

cULus ListingNumber	E90377	cULus Listed	Yes
---------------------	--------	--------------	-----

Additional Information

RoHS Compliant

Yes

Product Environmental Profile Yes

Technical Information

Voltage

600.0 V