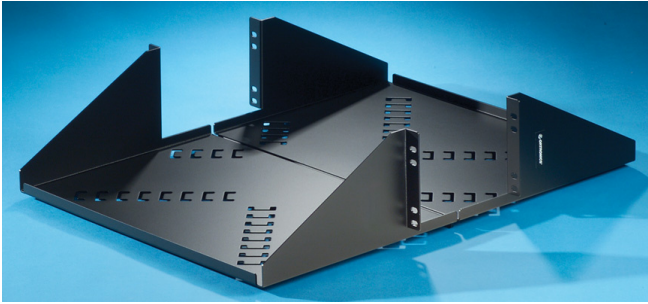




Ortronics
Double Equipment Shelf for Mighty Mo Racks - 19 x 5.25 in x 24 in - black - works with 6.5 in channel rail
Part No. 60400355



Legrand double equipment shelf supports miscellaneous equipment, test gear, etc. The double shelves work with Mighty Mo racks with 6.5" deep channels. Shelf widths are available in 17", 18.75" and 21.37". Black.

Features & Benefits

Provides organized management of patch cables horizontally. Eliminates congestion around equipment and manages patch and cross connect cables vertically

Rings made out of steel. Sturdy, durable and flexible: rings flex at end which allows ease of maintenance (insertion or removal of cables)

Maximum ring fill capacity using Category 6 cable is 60 cables

Ideal where space is premium, mounts to front rail of Mighty Mo racks without overhanging

Specifications

General Info

Product Line	Ortronics	UPC Number	662875289487
Country Of Origin	United States	Application Sector	Commercial

Additional Information

RoHS Conformant	Yes
-----------------	-----