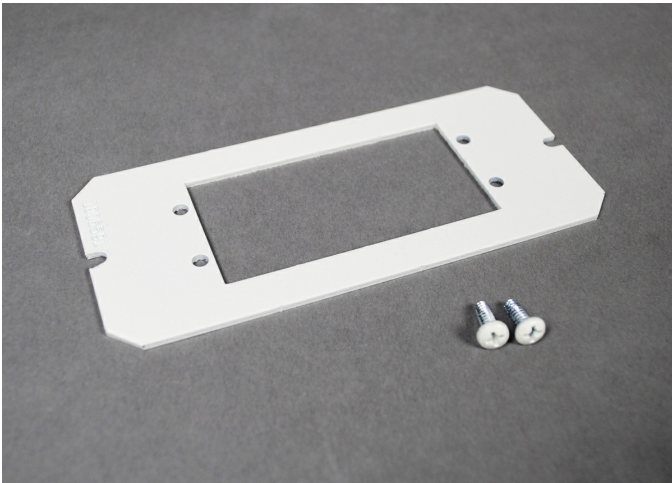




Wiremold
Evolution 6AT Series Device Plate
Part No. 6AAP



Used for floor coverings greater than 5/16" (7.9mm). The 6TS will allow the top surface of the cover to be flush with the finished floor. Includes six (6) 1/16" (1.6mm) thick shims. Up to a total of 3/8" (9.5mm) of adjustment.

Features & Benefits

Used for floor coverings greater than 5/16" (7.9mm). The 6TS will allow the top surface of the cover to be flush with the finished floor. Includes six (6) 1/16" (1.6mm) thick shims. Up to a total of 3/8" (9.5mm) of adjustment.

Specifications

General Info

Product Line	Wiremold	UPC Number	786564059752
Country Of Origin	United States	Construction	Not Assembled
Application Sector	Commercial	Standard	cULus Listed Metallic Outlet Boxes: File E2961 Guide QCIT. cULus Listed Nonmetallic Outlet Boxes & Fittings Classified for Fire Resistance: File R8209 Guide CEYY. Meets Article 300.21 & 300.22(C) & 314 of NEC.
Type	Poke-Thru		

Dimensions

Product Width US	2.2 in	Product Depth US	0.071 in
Product Length US	4.89 in		

Listing Agencies / 3rd Party Agencies

cULus ListingNumber	E2961	cULus Listed	Yes
---------------------	-------	--------------	-----

Additional Information

RoHS Conformant	Yes
-----------------	-----