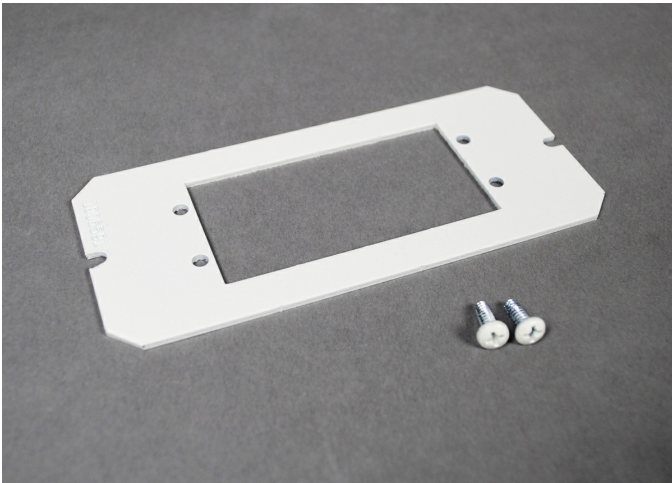




Wiremold
Evolution 6AT Series Device Plate
Part No. 6AAP



Used for floor coverings greater than 5/16" (7.9mm). The 6TS will allow the top surface of the cover to be flush with the finished floor. Includes six (6) 1/16" (1.6mm) thick shims. Up to a total of 3/8" (9.5mm) of adjustment.

Features & Benefits

Used for floor coverings greater than 5/16" (7.9mm). The 6TS will allow the top surface of the cover to be flush with the finished floor. Includes six (6) 1/16" (1.6mm) thick shims. Up to a total of 3/8" (9.5mm) of adjustment.

Specifications

General Info

Product Line	Wiremold	UPC Number	786564059752
Country Of Origin	United States	Construction	Not Assembled
Application Sector	Commercial, Education, Healthcare, Hospitality	Standard	cULus Listed, NEC
Warranty Type	1-Year from Installation or 2-Years from Day of Sale	Type	Device Plate

Dimensions

Product Width US	2.2 in	Product Weight US	0.9 lb
Product Depth US	0.071 in	Product Length US	4.89 in

Listing Agencies / 3rd Party Agencies

cULus ListingNumber	E2961	cULus Listed	Yes
---------------------	-------	--------------	-----

Additional Information

RoHS Compliant	Yes
----------------	-----
