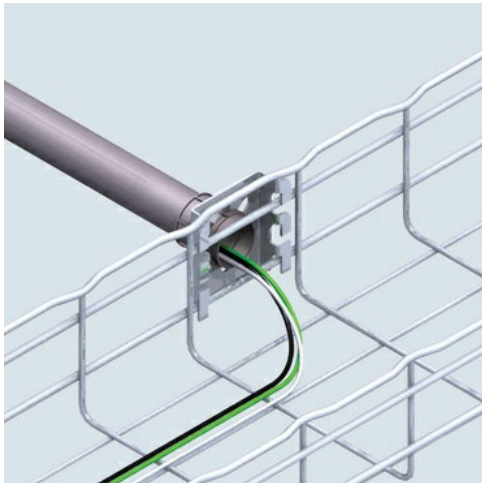




Cablofil  
1" CONDUIT ATTACHMENT - PREGALV (2D,,2W,,2L) [943115]  
Part No. 943115



Cablofil Wiremesh Cable Tray concept based upon performance, safety and economy

## Features & Benefits

Cablofil's Wiremesh Cable Tray concept is based on performance, safety, and economy. These three qualities make the Cablofil Wiremesh Cable Tray system preferred by installers

Cablofil adapts to the most complex configurations

Structure provides maximum strength for minimum weight

Ease of creating fittings on-site

Wide range of unique and universal accessories

Complete freedom in routing

Exceptionally fast installation

## Specifications

### General Info

|                    |                        |                   |               |
|--------------------|------------------------|-------------------|---------------|
| Product Line       | Cablofil               | Finish            | GS            |
| UPC Number         | 800388016316           | Country Of Origin | United States |
| Application Sector | Commercial, Industrial | Type              | Accessories   |

### Dimensions

|                   |            |                   |        |
|-------------------|------------|-------------------|--------|
| Product Width US  | 4.5 in     | Product Weight US | 0.2 lb |
| Product Volume US | 0.01 cu ft | Product Depth US  | 4.0 in |
| Product Height US | 1.0 in     |                   |        |

---

## Trade Programs

---

|     |     |
|-----|-----|
| BAA | Yes |
|-----|-----|

---

## Additional Information

---

|                               |     |
|-------------------------------|-----|
| Product Environmental Profile | Yes |
|-------------------------------|-----|

---