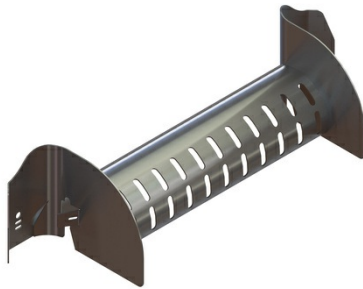




Cablofil
12" Universal Drop Out (UDO)
Part No. 944976



The Universal Dropout (UDO) is the premiere Cablofil® dropout solution. As the dropout with the strongest cable support, the UDO protects larger capacities of cables all without compromising the strength of your cable tray. It is ideal for copper, fiber optic, or PoE cabling.

Features & Benefits

Available in 8", 12", 18", and 24" versions.

The UDO comes in electrozinc, white, black or in a custom color to match the any data center.

Installation slots allow UDO to easily install directly on the edge of the wire mesh tray. Allows for easy moves, adds or changes when needed.

Provides a smooth surface for horizontal cable direction changes.

The 120 degree bend ensures cables do not have any potential pinch points or kinks.

Optional accessories available assist and secure the cables as they exit the UDO.

Specifications

General Info

| | | | |
|--------------|--------------|-------------------|----------------|
| Product Line | Cablofil | Finish | Custom Painted |
| UPC Number | 800388255944 | Country Of Origin | China |
| Type | Dropouts | | |

Dimensions

| | | | |
|-------------------|-------------|-------------------|----------|
| Product Width US | 17.696 in | Product Weight US | 2.314 lb |
| Product Volume US | 0.243 cu ft | Product Depth US | 5.285 in |
| Product Height US | 4.495 in | | |