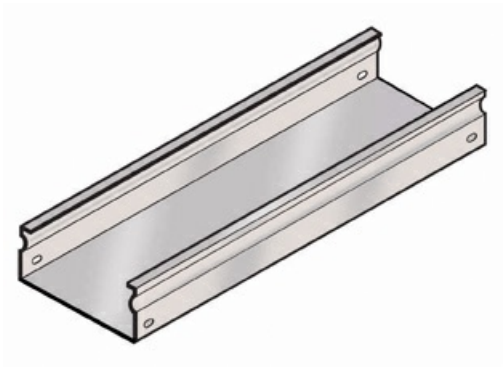




Cablofil
TROUGH - BLACK (2D,12W,120L)
Part No. 960003



Cablofil Fiber Trough utilizes high strength steel components to provide the strength and durability required to manage fiber cabling requirements in the most demanding data center environments.

Features & Benefits

- Strong corrosion resistant steel construction.
- Unique Design: allows cover to snap on.
- Rolled Edge: for cable protection.
- 18 gage steel (t).

Specifications

General Info

| | | | |
|--------------|--------------|-------------------|----------------|
| Product Line | Cablofil | Finish | Custom Painted |
| UPC Number | 800388242005 | Country Of Origin | Italy |

Dimensions

| | | | |
|-------------------|-------------|-------------------|----------|
| Product Width US | 11.8 in | Product Weight US | 19.6 lb |
| Product Volume US | 1.606 cu ft | Product Depth US | 117.6 in |
| Product Height US | 2.0 in | | |

Buy American Act Compliance

| | |
|-----|-----|
| BAA | Yes |
|-----|-----|