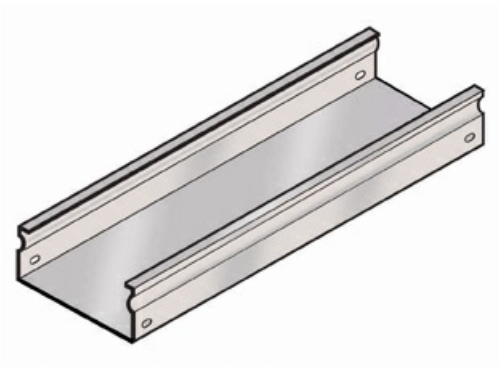




Cablofil  
**TROUGH - BLACK (4D,24W,120L)**  
Part No. 960008



Cablofil Fiber Trough utilizes high strength steel components to provide the strength and durability required to manage fiber cabling requirements in the most demanding data center environments.

Features & Benefits

- Strong corrosion resistant steel construction.

Unique Design: allows cover to snap on.
- Rolled Edge: for cable protection.

18 gage steel (t).

Specifications

General Info

Product Line	Cablofil	Finish	Painted
UPC Number	800388242050	Country Of Origin	Italy

Dimensions

Product Width US	23.6 in	Product Weight US	45.1 lb
Product Volume US	6.264 cu ft	Product Depth US	117.6 in
Product Height US	3.9 in		

Trade Programs

BAA	Yes
-----	-----