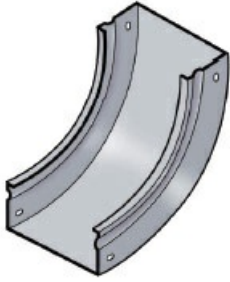




Cablofil  
**TROUGH VERT IN 2x12 - BLACK**  
Part No. 960043



Cablofil Fiber Trough utilizes high strength steel components to provide the strength and durability required to manage fiber cabling requirements in the most demanding data center environments.

## Features & Benefits

Strong corrosion-resistant steel.

Tool-less, snap on design.

18 gage steel.

## Specifications

### General Info

Product Line	Cablofil	Finish	Custom Painted
UPC Number	800388242401	Country Of Origin	Italy

### Dimensions

Product Width US	11.8 in	Product Weight US	2.1 lb
Product Volume US	0.344 cu ft	Product Depth US	7.1 in
Product Height US	7.1 in		

### Buy American Act Compliance

BAA	Yes
-----	-----