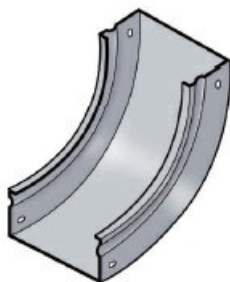




Cablofil
TROUGH VERT IN 4x24 - BLACK
Part No. 960048



Cablofil Fiber Trough utilizes high strength steel components to provide the strength and durability required to manage fiber cabling requirements in the most demanding data center environments.

Features & Benefits

Strong corrosion-resistant steel.

Tool-less, snap on design.

18 gage steel.

Specifications

General Info

| | | | |
|--------------|--------------|-------------------|---------|
| Product Line | Cablofil | Finish | Painted |
| UPC Number | 800388242456 | Country Of Origin | Italy |

Dimensions

| | | | |
|-------------------|-------------|-------------------|---------|
| Product Width US | 23.6 in | Product Weight US | 9.5 lb |
| Product Volume US | 1.902 cu ft | Product Depth US | 11.8 in |
| Product Height US | 11.8 in | | |

Trade Programs

| | |
|-----|-----|
| BAA | Yes |
|-----|-----|