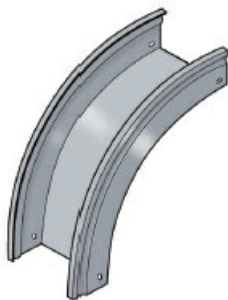




Cablofil
TROUGH 90 Deg VERT OUT- PAINTED (2H, 8W)
Part No. 960230



High strength steel components to provide the strength and durability required to manage cabling requirements in the most demanding environments. For Cablofil Fiber Trough and V-Trough systems.

Features & Benefits

Strong corrosion-resistant steel.

Tool-less, snap on design.

18 gage steel.

Specifications

General Info

Product Line	Cablofil	Finish	Custom Painted
UPC Number	800388244269	Country Of Origin	Italy

Dimensions

Product Width US	7.9 in	Product Weight US	1.6 lb
Product Volume US	0.315 cu ft	Product Depth US	8.3 in
Product Height US	8.3 in		

Trade Programs

BAA	Yes
-----	-----