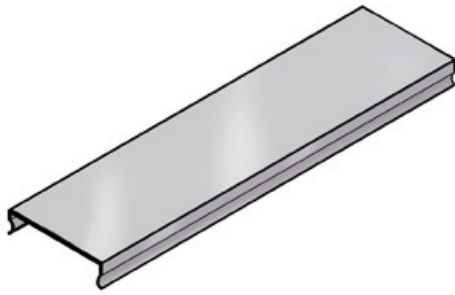




Cablofil
Trough Cover- PAINTED (20W)
Part No. 960552



High strength steel components to provide the strength and durability required to manage cabling requirements in the most demanding environments. For Cablofil Fiber Trough and V-Trough systems.

Features & Benefits

Strong corrosion-resistant steel.

Tool-less, snap-on design.

18 gage steel (t).

Specifications

General Info

Product Line	Cablofil	Finish	Custom Painted
Country Of Origin	Italy		

Dimensions

Product Width US	19.8 in	Product Weight US	20.0 lb
Product Volume US	1.348 cu ft	Product Depth US	117.6 in
Product Height US	1.0 in		

Buy American Act Compliance

BAA	Yes
-----	-----