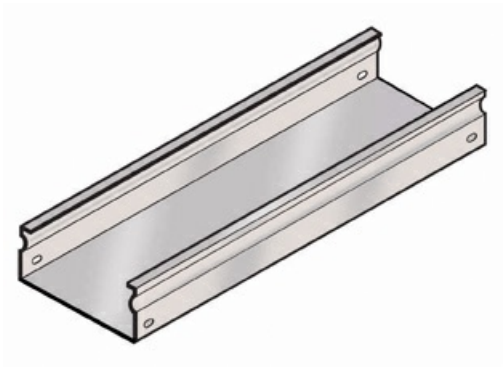




Cablofil
FiberTrough Straight- PAINTED (2H,4W)
Part No. 960561



Cablofil Fiber Trough utilizes high strength steel components to provide the strength and durability required to manage fiber cabling requirements in the most demanding data center environments.

Features & Benefits

- Strong corrosion resistant steel construction.
- Unique Design: allows cover to snap on.
- Rolled Edge: for cable protection.
- 18 gage steel (t).

Specifications

General Info

Product Line	Cablofil	Finish	Painted
Country Of Origin	Italy		

Dimensions

Product Weight US	6.916 lb
-------------------	----------

Trade Programs

BAA	Yes
-----	-----