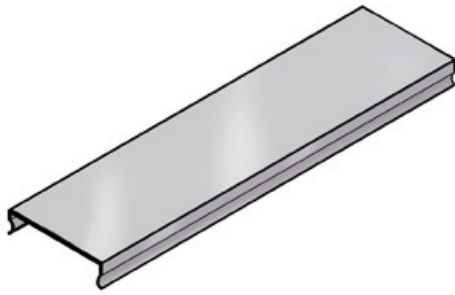




Cablofil  
Trough Cover- PAINTED (4W)  
Part No. 960562



High strength steel components to provide the strength and durability required to manage cabling requirements in the most demanding environments. For Cablofil Fiber Trough and V-Trough systems.

## Features & Benefits

Strong corrosion-resistant steel.

Tool-less, snap-on design.

18 gage steel (t).

## Specifications

### General Info

Product Line	Cablofil	Finish	Custom Painted
Country Of Origin	Italy		

### Dimensions

Product Width US	4.0 in	Product Weight US	2.0 lb
Product Volume US	0.272 cu ft	Product Depth US	117.6 in
Product Height US	1.0 in		

### Buy American Act Compliance

BAA	Yes
-----	-----