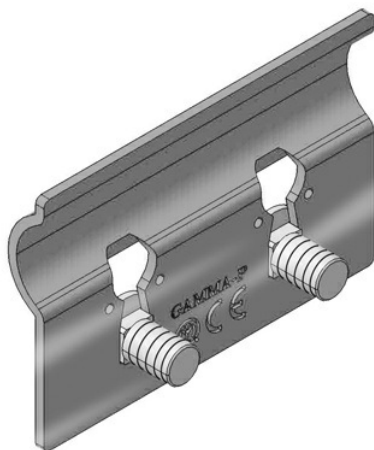




Cablofil
Trough FAS Coupler-PAINTED (2H)
Part No. 960570



V-Trough cable tray keeps your cables protected and easy to manage. Its high-strength steel construction matches many European OEM specifications and is available in smaller sizes for control and instrumentation cabling. V-Trough is manufactured to exacting standards so that all components fit together perfectly, making installation a snap.

Features & Benefits

Hardware included. M6x12mm square neck carriage bolt (zinc plated) and M6 serrated flange hex nut (zinc plated).

Specifications

General Info

Product Line	Cablofil	Finish	PE
UPC Number	800388245679	Country Of Origin	Italy

Dimensions

Product Width US	0.55 in	Product Weight US	0.2 lb
Product Volume US	0.001 cu ft	Product Depth US	2.36 in
Product Height US	1.57 in		

Trade Programs

BAA	Yes
-----	-----