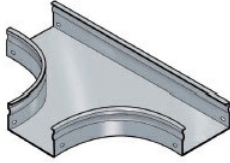


Cablofil Fiber Trough utilizes high strength steel components to provide the strength and durability required to manage fiber cabling requirements in the most demanding data center environments.



Features & Benefits

Strong corrosion-resistant steel.

Rolled edge: for cable protection.

Tool-less, snap on design.

18 gage steel.

Specifications

General Info

Product Line	Cablofil	Finish	Custom Painted
UPC Number	800388482562	Country Of Origin	Italy

Dimensions

Product Weight US	1.742 lb
-------------------	----------

Buy American Act Compliance

BAA	Yes
-----	-----
