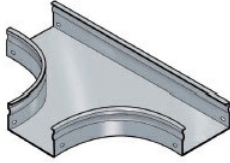


Cablofil Fiber Trough utilizes high strength steel components to provide the strength and durability required to manage fiber cabling requirements in the most demanding data center environments.



## Features & Benefits

---

Strong corrosion-resistant steel.

Rolled edge: for cable protection.

Tool-less, snap on design.

18 gage steel.

## Specifications

---

### General Info

---

Product Line	Cablofil	Finish	Custom Painted
UPC Number	800388482593	Country Of Origin	Italy

---

### Dimensions

---

Product Weight US	12.435 lb
-------------------	-----------

---

### Buy American Act Compliance

---

BAA	Yes
-----	-----

---