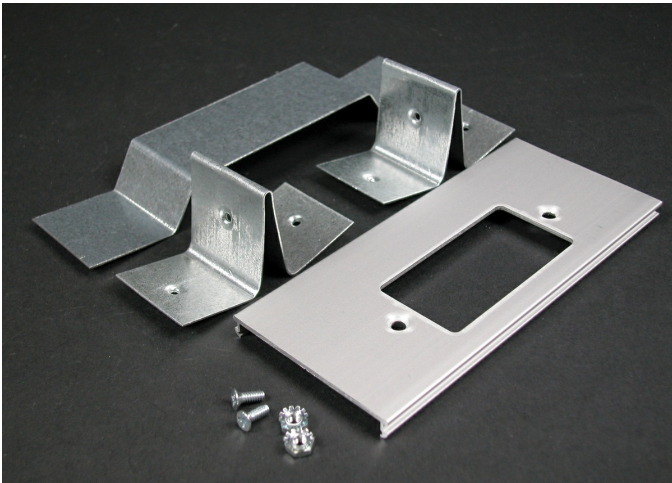




Wiremold
AL3300 Offset GFCI Receptacle Cover Plate
Part No. AL3346GO



Installs rectangular devices including surge receptacles, GFCI, and other rectangular faced single-gang wiring devices in divided aluminum raceway. 6" (152mm) offset divider included. Can also be used with 106 communication frames.

Features & Benefits

Installs rectangular devices including surge receptacles, GFCI, and other rectangular faced single-gang wiring devices in divided aluminum raceway. 6" (152mm) offset divider included. Can also be used with 106 communication frames.

Specifications

General Info

Product Line	Wiremold	UPC Number	786776524611
Country Of Origin	Mexico	Application Sector	Commercial
Standard	cULus Listed Raceway: File E4376 Guide RJPR. Fittings: File E41751 Guide RJPR. Raceway & Fittings: Meet Article 386 of NEC. Multioutlet Assemblies: Meet Article 380 of NEC.	Type	Raceway

Dimensions

Product Width US	2.75 in	Product Length US	6.0 in
------------------	---------	-------------------	--------

Listing Agencies / 3rd Party Agencies

cULus ListingNumber	E41751	cULus Listed	Yes
---------------------	--------	--------------	-----

Buy American Act Compliance

NAFTA	Yes
-------	-----

Additional Information

RoHS Conformant	Yes	Product Environmental Profile	Yes
-----------------	-----	-------------------------------	-----

Technical Information

Voltage	600.0 V
---------	---------
