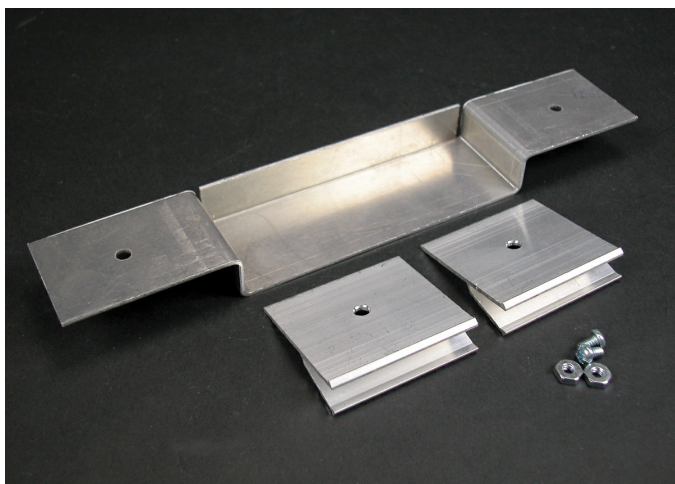




Wiremold
AL5200 Large Multi-Channel Raceway Offset Divider Fitting
Part No. AL5260



Used to allow device offsets and to extend over ribs in the raceway base. Snap fits into base.

Features & Benefits

Used to allow device offsets and to extend over ribs in the raceway base. Snap fits into base.

Specifications

General Info

Product Line	Wiremold	UPC Number	786776047301
Country Of Origin	United States	Application Sector	Commercial
Standard	cULus Listed Raceway: File E4376 Guide RJPR. Fittings: File E41751 Guide RJPR. Raceway & Fittings: Meet Article 386 of NEC. Multioutlet Assemblies: Meet Article 380 of NEC.	Type	Raceway

Dimensions

Product Weight US 0.182 lb

Listing Agencies / 3rd Party Agencies

cULus ListingNumber	E41751	cULus Listed	Yes
---------------------	--------	--------------	-----

Additional Information

RoHS Compliant	Yes	Product Environmental Profile	Yes
----------------	-----	-------------------------------	-----

Technical Information

Voltage	600.0 V
---------	---------
