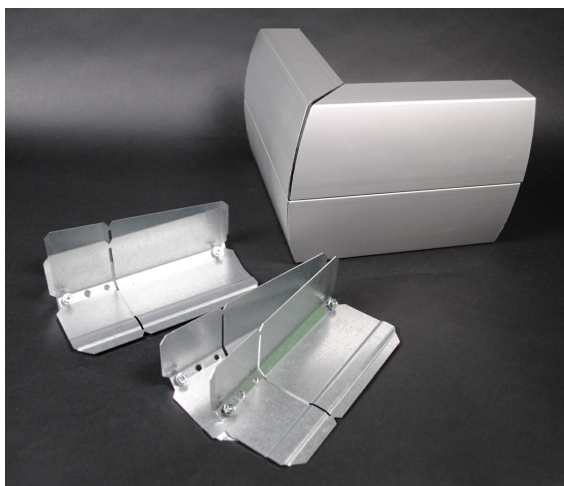




Wiremold  
ALDS4000 External Elbow Fitting  
Part No. ALDS4018



External corner for new lay-in or pull-through installations. Includes one pair of DS4001 Couplings.

## Features & Benefits

External corner for new lay-in or pull-through installations. Includes one pair of DS4001 Couplings.

## Specifications

### General Info

Product Line	Wiremold	UPC Number	786776083187
Country Of Origin	Mexico	Application Sector	Commercial
Standard	cULus Listed Raceway: File E4376 Guide RJBT. Fittings: File E41751 Guide RJPR. Meets Article 386 of NEC. Meets Section 12-1600 of CEC.	Type	Raceway

### Dimensions

Product Width US	5.75 in	Product Weight US	3.0 lb
Product Height US	8.13 in	Product Length US	8.13 in

### Listing Agencies / 3rd Party Agencies

cULus ListingNumber	E41751	cULus Listed	Yes
---------------------	--------	--------------	-----

### Trade Programs

USMCA	Yes
-------	-----

---

Additional Information

---

RoHS Compliant	Yes
----------------	-----

---

Technical Information

---

Voltage	600.0 V
---------	---------

---