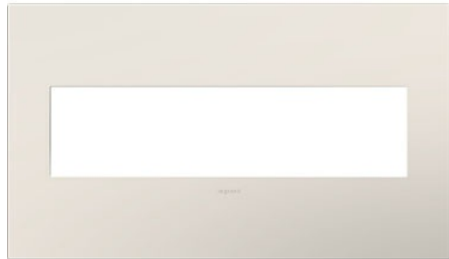




adorne Collection
adorne® Satin Light Almond Four-Gang Screwless Wall Plate
Part No. AWP4GLA4

An easy-going tone that coordinates with practically any décor or style. A 2-Gang Wall Plate, it is perfectly sized to fit any combination of up to two standard-sized adorne devices, or up to four half-sized adorne designer switches and outlets.



Features & Benefits

- Includes one Wall Plate and one Steel Frame for mounting the wall plate.
- Made to exclusively fit the designer switches, dimmers and outlets from the adorne® Collection, snapping into place with ease.
- Coordinate with other designer switches and outlets throughout your home for a cohesive, contemporary look.
- A perfect finishing touch for any space, adding a sleek and contemporary aesthetic through its screwless design and low-profile.
- Other Wall Plates from the adorne® Collection are available in extensive range of on-trend colors, materials and cast metals.

Specifications

General Info

Product Line	Pass & Seymour	Color	Satin Light Almond
Country Of Origin	Mexico	Construction	Screwless Design Snaps into Frame
Wall Plate Type	Dimmer/Switch, Outlet	Application Sector	Residential/Commercial
Standard	cULus UL514, cETLus	Warranty Type	Limited Lifetime Warranty

Dimensions

Product Width US	8.88 in	Product Depth US	0.35 in
Product Height US	5.13 in		

Technical Information

Cutout	Rectangular	Thickness	0.07 in
Number of Gangs	4	Mounting Type	Screwless
Orientation	Horizontal	Connection Type	Screwless
