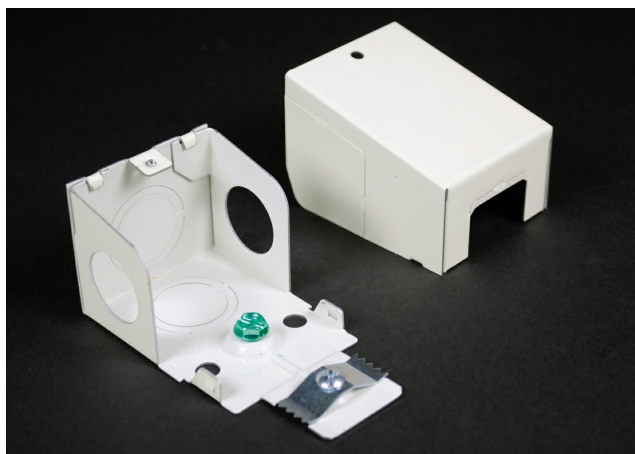




**Wiremold**  
**2000 ENTRANCE END FITTING BLACK 1/2IN AND 3/4IN KNOCK-OUTS**  
Part No. BK2010A3



Plugmold® Multioutlet Systems are available in a wide variety of lengths and fittings and in a variety of finishes to provide versatile solutions for many applications. Plugmold options include single or alternating circuits, standard or isolated ground receptacles, GFCI protection, tamper-resistant protection, USB charging, Snapicoil® harnesses of prewired receptacles, and cord-ended units. Plugmold® Multioutlet Systems are available in black or ivory ScuffCoat™ finish, painted white or gray enamel steel, stylish stainless steel, anodized aluminum and durable textured ivory nonmetallic. The painted steel product works with many types of decor and is paintable to integrate with most color schemes. Durable stainless steel and anodized aluminum Plugmold products are corrosion-resistant, making them ideal for labs.

## Features & Benefits

Offers larger capacity than V2010A2. 1/2" trade size KOs on end, each side and bottom. 3/4" trade size KOs on bottom and rear. Includes ground screw. Use with 2000 Series.

## Specifications

### General Info

Product Line	Wiremold	UPC Number	786776142297
Country Of Origin	United States	Application Sector	Commercial
Standard	cULus Listed Base & Blank Cover: File E4376 Guide RJBT. Multioutlet Assemblies: File E15191 Guide PVGT. Fittings: File E41751 Guide RJPR. Base & Blank Cover & Plugmold Series w/Snapcoil Harness: Meets Article 386 of NEC. Meets Section 12-3032 of CEC. Plugmold Wired Sections: Meets Article 380 of NEC. Meets Section 12-3032 of CEC.	Type	Plugmold

### Dimensions

Product Width US	2.109 in	Product Weight US	0.73 lb
Product Depth US	2.7 in	Product Length US	2.109 in

### Listing Agencies / 3rd Party Agencies

cULus ListingNumber	E41751	cULus Listed	Yes
---------------------	--------	--------------	-----

### Trade Programs

USMCA	Yes
-------	-----

---

Additional Information

---

RoHS Compliant	Yes
----------------	-----

---

Technical Information

---

Amperage	15 A	Enclosure Type	Steel
Voltage	125.0 V	Environmental Conditions	Dry interior locations

---