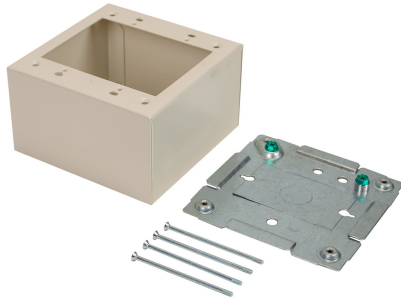




Wiremold
2G EXT DEEP DEVICE BOX-FOG WHITE
Part No. C2444-2FW



2400® Series Raceway is a single compartment raceway designed for communication or power applications and ideal for use in classrooms, offices, and hotel applications, or anywhere a small low profile raceway is needed. 2400D® Series Divided Raceway is a low profile steel raceway for use where a limited number of power and low voltage cables are required in the same raceway.

Features & Benefits

Two-gang device box with extra depth to allow installation of cabling that requires greater bend radius and storage. Cover has twistout on all four sides for 2400 Series Raceway.

Base has knockout to enable extension from existing single-gang flush wall box and 1/2" and 1" concentric trade size KOs. Accepts industry standard faceplates for electrical and communication devices.

Certified to Canadian Safety Standards for sale in Canada. When ordering this product for Canada, add "C" to the beginning of the part number to denote Canadian versions, i.e. "CV2444" or "C2444-FW".

NOTE: Accepts NEMA double-gang standard faceplates.

Specifications

General Info

Product Line	Wiremold	UPC Number	786776139167
Country Of Origin	United States		

Dimensions

Product Weight US	1.354 lb
-------------------	----------

Listing Agencies / 3rd Party Agencies

cULus ListingNumber	E41751	cULus Listed	Yes
---------------------	--------	--------------	-----

Additional Information

RoHS Compliant	Yes
----------------	-----
