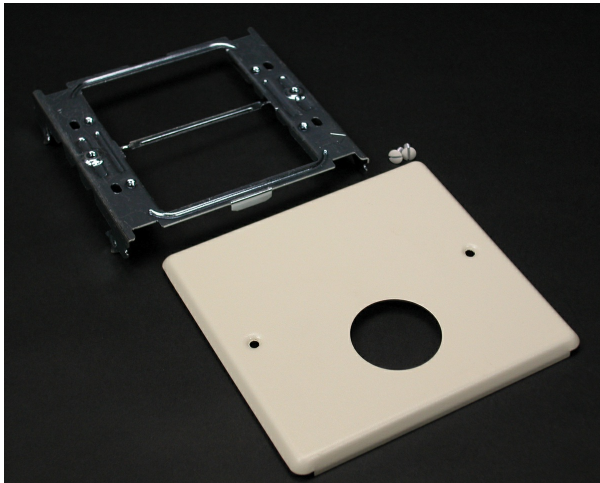




Wiremold
2-GANG SINGLE ROUND OPENING-GRAY
Part No. CG4047AX



4000 Registered Series Raceway is the work horse of surface raceway systems. 4000 Series Raceway can be divided for multi-service applications making it ideal for applications requiring a large cable capacity and dual-service requirements. Commercial, institutional, and industrial applications benefit from the rigid steel construction and durable ScuffCoat Trademark finish of this raceway. 4000 Series Raceway is also ideal for municipalities that have code requirements calling for all steel construction or that prohibit nonmetallic cable management systems.

Features & Benefits

Accepts straight blade and locking single receptacles with face diameters of 1.38" to 1.39" (35mm to 36mm). NOTE: Certified to Canadian Safety Standards for sale in Canada

When ordering these products, change the "V" color prefix to "CV" or the "G" color prefix to "CG" to denote the Canadian versions

Specifications

General Info

| | | | |
|-----------------------|--------------|-----------------------|--|
| Product Line | Wiremold | Color | Gray |
| UPC Number | 786776050790 | Country Of Origin | United States |
| Material | Steel | Product Series | 4000 Series, 4047 Series, 6000 Series |
| Number of Receptacles | 1 | Installation Location | On Wall |
| Application Sector | Commercial | Warranty Type | 1-Year from Installation or 2-Years from Day of Sale |
| Type | Cover Plate | | |

Dimensions

| | | | |
|-------------------|----------|-------------------|----------|
| Product Width US | 5.125 in | Product Weight US | 0.665 lb |
| Product Length US | 4.75 in | | |

Listing Agencies / 3rd Party Agencies

| | | | |
|---------------------|--------|--------------|-----|
| cULus ListingNumber | E41751 | cULus Listed | Yes |
|---------------------|--------|--------------|-----|

Trade Programs

| | |
|-------|-----|
| USMCA | Yes |
|-------|-----|

Additional Information

| | |
|----------------|-----|
| RoHS Compliant | Yes |
|----------------|-----|

Technical Information

| | | | |
|--------------|----|-----------------|---|
| Is Pre-Wired | No | Number of Gangs | 2 |
|--------------|----|-----------------|---|

| | |
|----------------|--------|
| Indoor/Outdoor | Indoor |
|----------------|--------|
