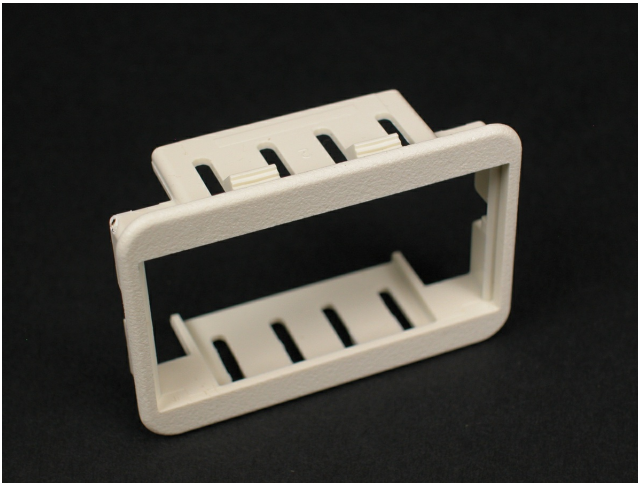




Wiremold
CM CM2/Activate 2A Mini Adapter Mounting Bezel
Part No. CM-2AB-BK



Accepts one CM2 Series communication module or one Pass and Seymour 2A Activate Series insert.

Features & Benefits

Accepts one CM2 Series communication module or one Pass and Seymour 2A Activate Series insert.

Specifications

General Info

Product Line	Wiremold	UPC Number	786776190472
Country Of Origin	United States	Standard	cULus Listed Communication Circuit Accessories: File E145222 Guide DUXR. Meets Article 800 of NEC. Meets Article 60-308 of CEC.

Dimensions

Product Weight US	0.022 lb
-------------------	----------

Listing Agencies / 3rd Party Agencies

cULus ListingNumber	E145222	cULus Listed	Yes
---------------------	---------	--------------	-----

Trade Programs

USMCA	Yes
-------	-----

Additional Information

RoHS Compliant

Yes
