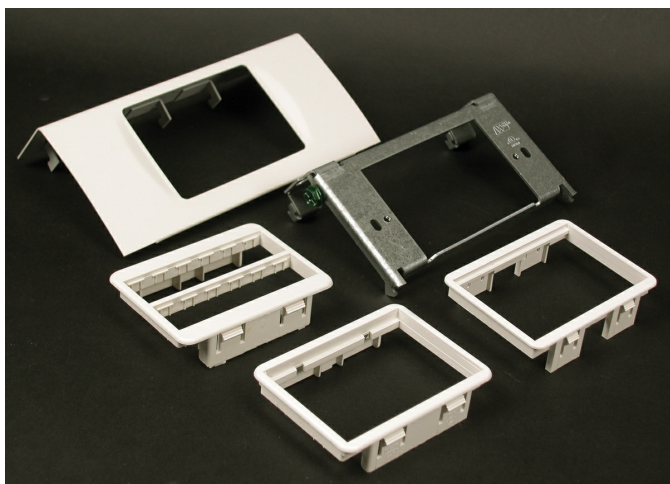




Wiremold
Discontinued - DS4000 Single Channel MAB Device Plate Fitting
Part No. DS4047MAB-DV



Installs communication devices into DS4000 Series Raceway. Includes CM-MAB Adapter for Wiremold Open System connectivity modules and Pass and Seymour Activate inserts. Also includes MAB2S2 Adapter for Ortronics Series II inserts and MAB6TJ Adapter for Ortronics TracJack connectors.

Features & Benefits

Installs communication devices into DS4000 Series Raceway. Includes CM-MAB Adapter for Wiremold Open System connectivity modules and Pass and Seymour Activate inserts. Also includes MAB2S2 Adapter for Ortronics Series II inserts and MAB6TJ Adapter for Ortronics TracJack connectors.

Specifications

General Info

Product Line	Wiremold	UPC Number	786776081343
Country Of Origin	United States	Application Sector	Commercial
Standard	cULus Listed Raceway: File E4376 Guide RJBT. Fittings: File E41751 Guide RJPR. Base & Blank Cover: Meets Article 386 of NEC. Meets Section 12-600 of CEC.	Type	Raceway

Dimensions

Product Length US	6.0 in
-------------------	--------

Listing Agencies / 3rd Party Agencies

cULus ListingNumber	E41751	cULus Listed	Yes
---------------------	--------	--------------	-----

Buy American Act Compliance

NAFTA	Yes
-------	-----

Additional Information

RoHS Conformant	Yes
-----------------	-----

Technical Information

Voltage	600.0 V
---------	---------
