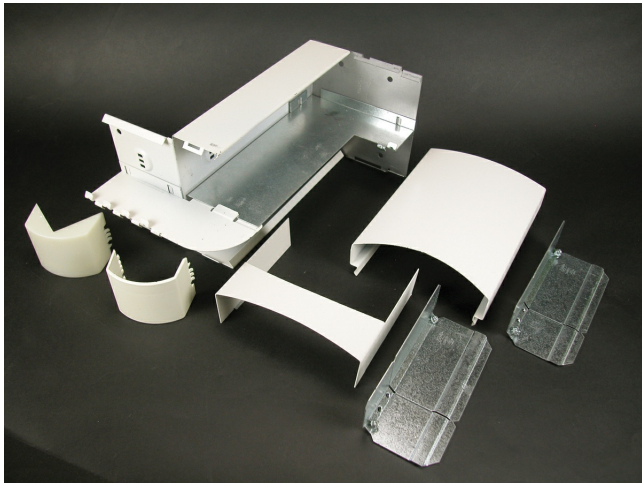




Wiremold
Discontinued - DS4000 Offset Fitting
Part No. DS4075A-DV



Mounts DS4000 Series Raceway around wall offsets and columns with maximum offset depth of 9" (229mm). Minimum Offset: 3" (76mm). Maximum Offset: 9 3/4" (235mm).

Features & Benefits

Mounts DS4000 Series Raceway around wall offsets and columns with maximum offset depth of 9" (229mm). Minimum Offset: 3" (76mm). Maximum Offset: 9 3/4" (235mm).

Specifications

General Info

Product Line	Wiremold	UPC Number	786776081374
Country Of Origin	United States	Application Sector	Commercial
Standard	cULus Listed Raceway: File E4376 Guide RJBT. Fittings: File E41751 Guide RJPR. Base & Blank Cover: Meets Article 386 of NEC. Meets Section 12-600 of CEC.	Type	Raceway

Listing Agencies / 3rd Party Agencies

cULus ListingNumber	E41751	cULus Listed	Yes
---------------------	--------	--------------	-----

Buy American Act Compliance

NAFTA	Yes
-------	-----

Additional Information

RoHS Conformant	Yes
-----------------	-----

Technical Information

Voltage	600.0 V
---------	---------
