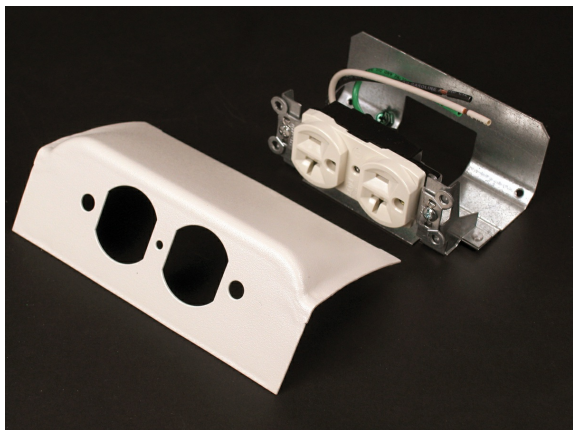




Wiremold
Discontinued - DS4000 Downward Duplex Device Plate Fitting With One Duplex Installed
Part No. DSDWNDQ-DV



Pass and Seymour 20A duplex receptacle with 6" (152mm) lead wires pre-installed on a bracket into DS4000 Series Raceway in a downward facing, protected position.

Features & Benefits

Pass and Seymour 20A duplex receptacle with 6" (152mm) lead wires pre-installed on a bracket into DS4000 Series Raceway in a downward facing, protected position.

Specifications

General Info

Product Line	Wiremold	Color	Fog White
UPC Number	786776082340	Country Of Origin	United States
Application Sector	Commercial	Standard	cULus Listed Raceway: File E4376 Guide RJBT. Fittings: File E41751 Guide RJPR. Base & Blank Cover: Meets Article 386 of NEC. Meets Section 12-600 of CEC.
Warranty Type	1-Year from Installation or 2-Years from Day of Sale	Type	Raceway

Dimensions

Product Weight US	0.29 lb
-------------------	---------

Listing Agencies / 3rd Party Agencies

cULus ListingNumber	E41751	cULus Listed	Yes
---------------------	--------	--------------	-----

Additional Information

RoHS Compliant	Yes
----------------	-----

Technical Information

Voltage

600.0 V