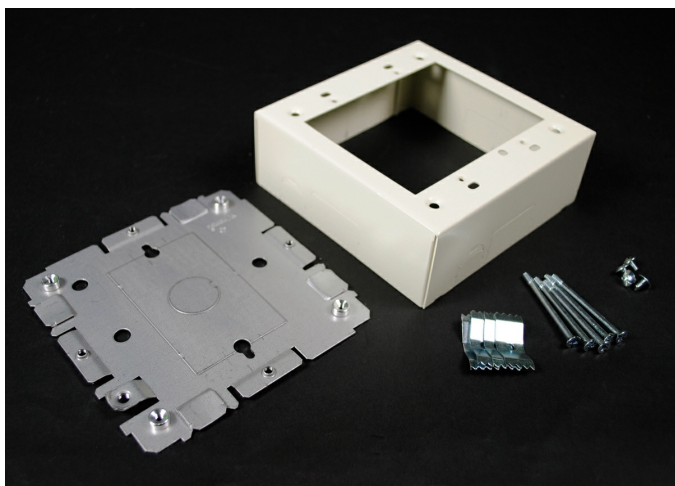




Wiremold
2000 Two-Gang Device Box Fitting
Part No. G2048-2



Two Gang Device Box. Cover has twistouts for 2000, 500 and 700 Series Raceways. Base has 1/2" trade size KO and rectangular KO for extension to wall box. Base has #10 threaded hole for ground connection.

Features & Benefits

Two Gang Device Box. Cover has twistouts for 2000, 500 and 700 Series Raceways. Base has 1/2" trade size KO and rectangular KO for extension to wall box. Base has #10 threaded hole for ground connection.

Specifications

General Info

Product Line	Wiremold	UPC Number	786776037494
Country Of Origin	United States	Application Sector	Commercial

Standard	cULus Listed Base & Blank Cover: File E4376 Guide RJBT. Multioutlet Assemblies: File E15191 Guide PVGT. Fittings: File E41751 Guide RJPR. Base & Blank Cover & Plugmold Series w/Snapicoil Haarness: Meets Article 386 of NEC. Meets Section 12-3032 of CEC. cULus Listed Raceway: File E4376 Guide RJBT. Fittings: File E41751 Guide RJPR. Base & Black Cover: Meets Article 386 of NEC. Meets Section 12-600 of CEC.	Type	Plugmold
----------	--	------	----------

Dimensions

Product Weight US 0.8 lb

Trade Programs

USMCA Yes

Additional Information

RoHS Compliant	Yes	Product Environmental Profile	Yes
----------------	-----	-------------------------------	-----

Technical Information

Amperage	15 A	Enclosure Type	Steel
----------	------	----------------	-------

Voltage	125.0 V	Environmental Conditions	Dry interior locations
---------	---------	--------------------------	------------------------