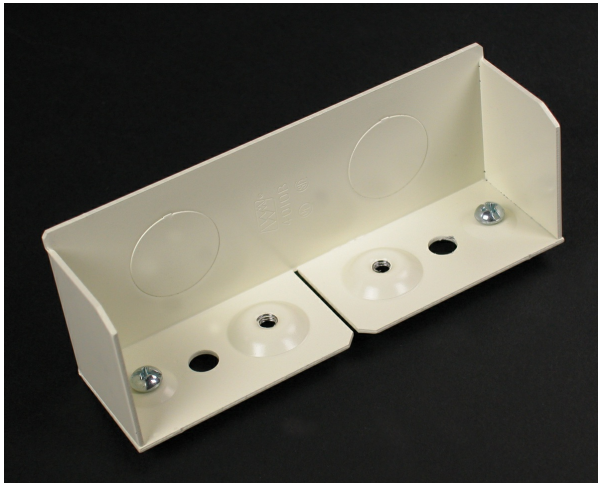




**Wiremold**  
**Wiremold 4000 Series Blank End Fitting, Gray**  
Part No. G4010B



The Wiremold 4000 Series Raceway is the workhorse of surface cable raceway systems. The multiple channel cable raceway can be divided for multi-service applications and is ideal for all applications requiring a large cable capacity dual service steel raceway. Commercial, institutional and industrial applications all benefit from the Wiremold 4000 Series rigid steel construction and durable Ivory ScuffCoat finish. The Wiremold 4000 Series Raceway is also ideal for municipalities that require either all steel construction or prohibit nonmetallic cable management systems.

## Features & Benefits

This product meets the material restrictions of RoHS

## Specifications

### General Info

|                    |              |                   |   |
|--------------------|--------------|-------------------|---|
| Product Line       | Wiremold     | Color             | Gray  |
| UPC Number         | 786776088847 | Country Of Origin | United States   |
| Application Sector | Commercial   | Standard          | cULus Listed Surface Metal Raceway: File E41751: Guide RJPR/RJPR7 |
| Type               | Raceway      |                   |   |

### Dimensions

|                   |             |                   |         |
|-------------------|-------------|-------------------|---------|
| Product Width US  | 4.63 in     | Product Weight US | 0.23 lb |
| Product Volume US | 11.18 cu in | Product Depth US  | 1.38 in |
| Product Height US | 1.75 in     |                   |         |

### Listing Agencies / 3rd Party Agencies

|                     |        |              |     |
|---------------------|--------|--------------|-----|
| cULus ListingNumber | E41751 | cULus Listed | Yes |
|---------------------|--------|--------------|-----|

---

## Buy American Act Compliance

---

|       |     |
|-------|-----|
| NAFTA | Yes |
|-------|-----|

---

## Additional Information

---

|                 |     |                               |     |
|-----------------|-----|-------------------------------|-----|
| RoHS Conformant | Yes | Product Environmental Profile | Yes |
|-----------------|-----|-------------------------------|-----|

---

## Technical Information

---

|         |         |
|---------|---------|
| Voltage | 600.0 V |
|---------|---------|

---