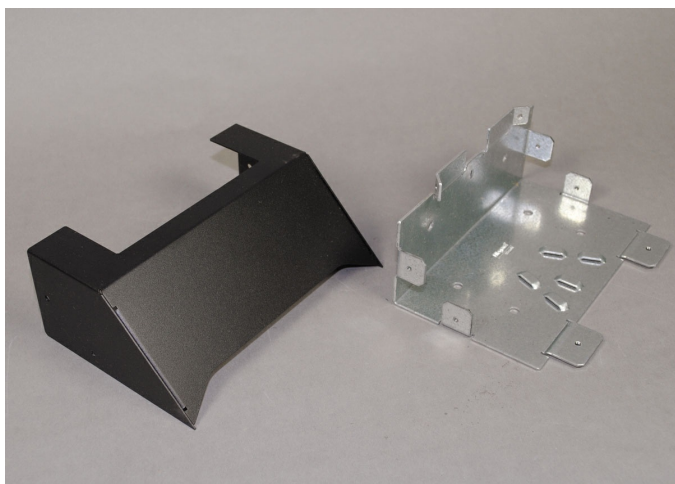




Wiremold
OFR Series Overfloor Raceway 4000 Raceway Transition
Part No. OFR89-4000



For connecting vertical runs of 4000 Series Raceway with OFR Series Raceway. Includes removable divider than can be positioned to feed any raceway channel.

Features & Benefits

For connecting vertical runs of 4000 Series Raceway with OFR Series Raceway. Includes removable divider than can be positioned to feed any raceway channel.

Specifications

General Info

| | | | |
|-------------------|---|--------------------|--------------|
| Product Line | Wiremold | UPC Number | 786776175202 |
| Country Of Origin | United States | Application Sector | Commercial |
| Standard | OFR Series Overfloor Raceway System is cETLus Listed. | Type | Raceway |

Dimensions

| | | | |
|-------------------|----------|-------------------|----------|
| Product Width US | 4.875 in | Product Weight US | 3.3 lb |
| Product Height US | 2.562 in | Product Length US | 7.187 in |

Listing Agencies / 3rd Party Agencies

| | |
|------------|-----|
| ETL Listed | Yes |
|------------|-----|

Trade Programs

| | |
|-------|-----|
| USMCA | Yes |
|-------|-----|

Additional Information

RoHS Compliant Yes

Technical Information

Voltage 600.0 V
