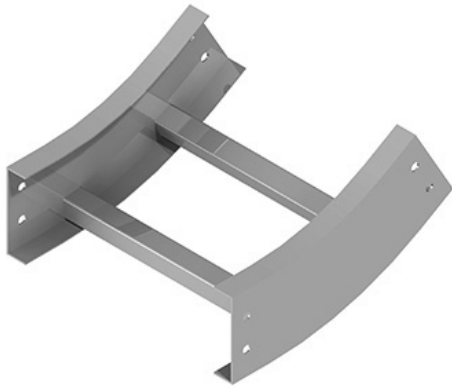




Cablofil
Vertical Inside 30 Elbow
Part No. P035024



Choose from an extensive selection of metallic ladder tray with a variety of rung and bottom styles to choose from. Finishes include steel, 304L and 316L stainless steel to meet the needs of any application. Rail heights range from 4" to 7" and width sizes are available up to 36".

Features & Benefits

Splices included

Specifications

General Info

Product Line	Cablofil	Finish	GC
UPC Number	800388331112	Country Of Origin	Mexico

Dimensions

Product Width US	30.0 in	Product Weight US	12.251 lb
Product Volume US	3.957 cu ft	Product Depth US	9.75 in
Product Height US	23.375 in		

Buy American Act Compliance

BAA	Yes
-----	-----